

# Wirral Safeguarding Children Board

## Annual Report 2017-18

October 2018

# I. The Wirral Safeguarding Children Board



**Wirral Safeguarding  
Children Board**

**Annual Report 2017-18**



# Statutory Objectives and Functions of WSCB

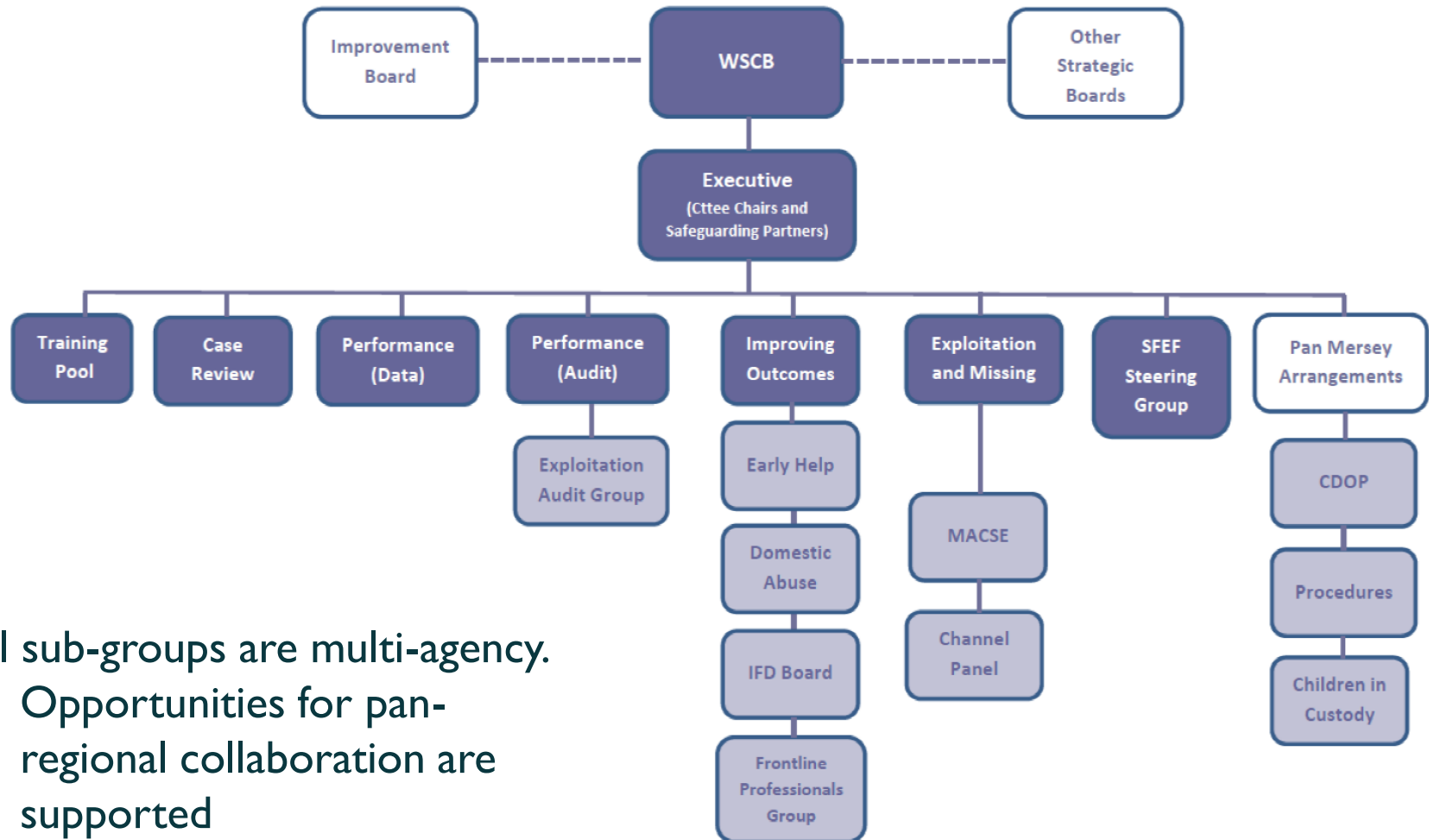
**Section 14 of the Children Act 2004** sets out the objectives of LSCBs, which are:

- (a) to coordinate what is done by each person or body represented on the Board for the purposes of safeguarding and promoting the welfare of children in the area; and
- (b) to ensure the effectiveness of what is done by each such person or body for those purposes.

*The WSCB operates as an independent multi-agency body under the direction of the independent chair (Maggie Atkinson) and is not subordinate to any other body. Under the Children and Social Work Act (2017) LSCB's will be replaced by Multi-agency Safeguarding Arrangements by Sept 19*



# Structure of WSCB and sub committees



All sub-groups are multi-agency.  
Opportunities for pan-regional collaboration are supported



# Local Background and Safeguarding Context for 2017-18

WSCB Annual Report 17-18

- Population of Wirral is 320,000 with 71,400 children and young people (0-18)
- Approximately 20% of children in Wirral live near or below the poverty line
- Wirral still has a very high number of children who are looked after
- The last year has seen a focus on the Right Service Right Time approach to ensuring children benefit from swift, targeted interventions
- In October 2017 the WSCB introduced the Supporting Families Enhancing Futures (SFEF) model for working with families
- Reducing budgets and resources remains a challenge for all agencies as does ensuring positive outcomes for all children



# If Wirral had 100 Children

**49** would be girls

**51** would be boys



**35** would live in lone parent families



**10** would have a special education need



**2** of whom would have an education and health care plan

**69** would achieve a good level of development at age 5



**29** would be living in families in receipt of tax credit or universal credit



**1** would get into enough trouble to be referred to the Youth Offending Team



**90** would be white British

**10** would be from ethnic minorities



**4** would speak English as an additional language



**20** would be living at or below the poverty line



**3** would have an allocated social worker



**2** would have a Team Around the Family plan




**1** would be in care

Fewer than **1** would be subject to a Child Protection Plan.

Fewer than **1** would not be in education, employment or training



## 2. Progress Against Priorities



HM Government

### Working Together to Safeguard Children

A guide to inter-agency working to safeguard and promote the welfare of children

July 2018

### Private Fostering - what does this mean to you?

- Are you looking after someone else's child?
- Do you know someone who is?
- Is someone looking after your child or children?

If yes, and it is for 28 days or more, this child may be in a private fostering\* arrangement and you need to share this information with the Local Authority Council

Private foster carers / parents are legally required to notify the local authority. Many people are not aware of this requirement; if you know a child or young person is being privately fostered and you think the local authority is unaware please notify us or support the parent / carer to do so.

The law was introduced to ensure that children in Private Fostering arrangements are seen and spoken to and their welfare is checked to make sure that children do not suffer abuse or neglect


Call the Integrated Front Door on 0151 606 2008 or email [cadtsocialcare@wirral.gcsx.gov.uk](mailto:cadtsocialcare@wirral.gcsx.gov.uk)

### Safeguarding is everyone's responsibility


\* Private Fostering is a private arrangement between a parent and a carer. When a child under 16 (or 18 if disabled) is cared for and provided with accommodation by an adult who is not a relative, for 28 days or more, it is called private fostering.

[http://wirralchildrensproceduresonline.com/chapters/priv\\_fost.html](http://wirralchildrensproceduresonline.com/chapters/priv_fost.html)  
<http://www.privatefostering.org.uk/>

[@wirralcsc](#) [WirralSafeguardingChildrenBoard](#)



November 2022





## Priority One: Children who are in need of help and protection are identified and responded to at the earliest opportunity by services effectively working together

DESIRED OUTCOMES	WHAT WE DID
<i>Implementation of the Supporting Families Enhancing Futures (SFEF) Model ensures children and young people receive the right help at the right time</i>	<ul style="list-style-type: none"> <li>• SFEF model launched in October 2017</li> <li>• Practice Guidance, guides, templates and resources published</li> <li>• Webpage established with comprehensive guidance</li> <li>• Multi-agency training plan launched. 1,000 professionals trained</li> </ul>
<i>Measurement of the effectiveness and impact of services on children, young people and their families demonstrates positive outcomes for children and young people</i>	<ul style="list-style-type: none"> <li>• Improving Outcomes Committee established</li> <li>• WSCB Operating framework published</li> <li>• Multi-agency dataset and narrative presented for scrutiny</li> <li>• Accountability meetings held as part of the Section 11/175 process</li> <li>• Introduction of Risk Register</li> </ul>
<i>The use of evidenced based tools across partner agencies demonstrably supports practice and improves outcomes</i>	<ul style="list-style-type: none"> <li>• Tools and guidance published on WSCB website and built into social care liquidlogic system</li> <li>• New threshold document published with links to relevant tools</li> <li>• Regular audits of usage undertaken</li> </ul>
<i>Accurate performance information clearly evidences how safe children and young people are</i>	<ul style="list-style-type: none"> <li>• Datasets agreed, published, presented to and scrutinised by the WSCB</li> <li>• Data aligned with set presented to improvement board</li> <li>• Data includes narrative</li> </ul>
<i>Review of the multi-agency thresholds of need improves understanding and application and ensures children receive the right help at the right time</i>	<ul style="list-style-type: none"> <li>• Revised threshold document and associated guidance published</li> <li>• Application of thresholds audit undertaken</li> </ul>



## Priority Two: Children are protected from sexual exploitation by a skilled workforce and the wider community is equipped to understand and respond to concerns

DESIRED OUTCOMES	WHAT WE DID
<i>Children's services professionals and wider community have a good understanding of signs, symptoms and impact of CSE and are aware of when and how to report concerns</i>	<ul style="list-style-type: none"> <li>• Bi monthly programme of multi-agency CSE audits undertaken and learning shared</li> <li>• Updated monthly multi-agency training delivered by Catch22 includes consideration of wider child exploitation</li> <li>• Extensive guidance and information on the WSCB website</li> <li>• Learning event held</li> </ul>
<i>Multi-agency lead officers are identified in every partner agency</i>	<ul style="list-style-type: none"> <li>• Lead officer guidance published</li> <li>• Lead officer details published on the WSCB website</li> </ul>
<i>Agencies demonstrate the effectiveness of their response to CSE and missing, including through audit activity</i>	<ul style="list-style-type: none"> <li>• Audit programme in place. Learning published and shared</li> <li>• CSE and CE included in multi-agency Section 11 audits</li> <li>• Audit activity includes voice of families and frontline professionals</li> </ul>
<i>Perpetrators are identified, pursued and successfully prosecuted</i>	<ul style="list-style-type: none"> <li>• CSE problem profile developed by Merseyside Police and intelligence shared at MACSE meetings</li> <li>• Exploitation is a standing item at each Board meeting</li> </ul>
<i>Children at risk of CSE are identified at the earliest opportunity and victims are supported for as long as is needed</i>	<ul style="list-style-type: none"> <li>• Promotion of the multi-agency training and continued delivery of briefings, including to taxi drivers and licensees</li> <li>• Introduction of the CSE workspace in children's services</li> </ul>
<i>Children are involved in the testing and review of the effectiveness of services</i>	<ul style="list-style-type: none"> <li>• Catch22 provide reports to the WSCB including feedback from children and young people supported by the service</li> </ul>

**Priority Three: Children and Young People who are Looked After, including those placed in Wirral by other Local Authorities are supported by agencies who effectively work together to keep them safe**

DESIRED OUTCOMES	WHAT WE DID
<i>WSCB can demonstrate how children and young people are positively listened to and responded to</i>	<ul style="list-style-type: none"> <li>• Children in Care Council presented their views and thoughts on safeguarding to the WSCB</li> <li>• Voice of young people is the opening item at the WSCB</li> <li>• Views are routinely captured and responded to (illustrated in the annual report)</li> </ul>
<i>Children and young people who are subject to Private Fostering arrangements and their families are well supported and kept safe</i>	<ul style="list-style-type: none"> <li>• Private Fostering assurance annual report into the WSCB established</li> <li>• A named Independent Reviewing Officer has oversight of all arrangements in Wirral for quality assurance</li> <li>• Training, briefings and challenge delivered in 2017-18</li> </ul>
<i>Children and young people placed in Wirral by other local authorities are aware of the 'local offer' and support is provided to make sure they are safeguarded</i>	<ul style="list-style-type: none"> <li>• Safeguarding Unit holds accurate database of all children placed in Wirral</li> <li>• Through commissioning arrangements all placing authorities aware of their responsibilities</li> </ul>
<i>Children currently living in Wirral whilst their immigration or asylum status is determined have access to services and are kept safe</i>	<ul style="list-style-type: none"> <li>• Assurance provided to WSCB that all children, regardless of their status can access services</li> </ul>

**Priority Four: Through its effective governance and relationships with influential forums and groups the Wirral Safeguarding Children Board ensures all partner agencies meet the needs of Children and Young people**

DESIRED OUTCOMES	WHAT WE DID
<i>Findings from the Ofsted review of the effectiveness of the WSCB and subsequent improvement action plan improve the governance and influence of the safeguarding board</i>	<ul style="list-style-type: none"> <li>• Improvement plan developed and scrutinised at each Improvement Board and WSCB meeting</li> <li>• Improvement plan for the WSCB completed</li> </ul>
<i>The WSCB development days inform a clear improvement action plan which positively influences the governance and functioning of the safeguarding board</i>	<ul style="list-style-type: none"> <li>• Development days completed.</li> <li>• WSCB review completed</li> </ul>
<i>The WSCB is prepared for the implementation of the forthcoming Children and Social Care Act</i>	<ul style="list-style-type: none"> <li>• Children and Social Work Act presented to the WSCB</li> <li>• Safeguarding Partners developing new model</li> </ul>
<i>The WSCB can demonstrate through its work with other influential bodies a clear and smart approach to the commissioning of services</i>	<ul style="list-style-type: none"> <li>• Relationship with influential groups revised and published in Operating Framework. Presentations made at OSC and HWBB. Chair member of Improvement Board</li> <li>• Children's commissioning manager member of the Improving Outcomes committee</li> </ul>
<i>The WSCB actively supports the Council led partnership 2020 vision and can evidence the positive impact on and improved outcomes for children and young people</i>	<ul style="list-style-type: none"> <li>• Through its committees WSCB actively supports several of the pledges particularly protecting vulnerable children and zero tolerance to domestic abuse</li> </ul>

**Priority Five: The Wirral Safeguarding Children Board discharges all of its statutory duties and ensures the effectiveness of arrangements to safeguard and promote the welfare of children and young people**

DESIRED OUTCOMES	WHAT WE DID
<i>The WSCB devises an improvement plan to address the 7 recommendations made in the Ofsted review of the effectiveness of the WSCB</i>	<ul style="list-style-type: none"> <li>• Improvement plan, developed and presented to, and scrutinised at Improvement Board and WSCB meetings</li> <li>• WSCB has completed all its actions against the 7 recommendations from Ofsted</li> </ul>
<i>Work is completed through the Board and committees and other groups established to ensure actions derived from the recommendations are completed</i>	<ul style="list-style-type: none"> <li>• A rigorous work plan was established to ensure completion of the actions from Ofsted recommendations. Significant progress was made during 16-18. All actions were completed by June 2018</li> </ul>
<i>The improvement plan is reviewed and challenged at each full meeting of the WSCB and the multi-agency improvement board</i>	<ul style="list-style-type: none"> <li>• Improvement is scrutinised on a monthly basis by the improvement board and bi monthly by the WSCB</li> </ul>
<i>The WSCB demonstrates progress and full achievement against all the actions within 18 months</i>	<ul style="list-style-type: none"> <li>• All actions for the WSCB have been completed</li> </ul>

# 3. WSCB Key Activities 2017-18



WIRRAL  
SAFEGUARDING  
CHILDREN BOARD

Multi-agency Audit  
Framework



- Duty on organisations to comply with annual safeguarding audit. All statutory agencies participated. Audits completed using online tool
- Audits followed up with accountability meetings for statutory agencies and agreed action plans
- Full report published in annual report
- WSCB introduced 'bite-size' audit topics throughout the year. Feedback very positive. Working Together 2018 will lead to expansion of programme
- Results from latest Section 11 and Section 175 audits illustrated on next few slides:





# Section 11 Audit : Topic 1

## Policies, Procedures & Thresholds

**51**   
**Completed audits**



Agencies have a named  
deputy for safeguarding

**96%**



Agencies have a clear statement of their  
commitment to safeguard children and  
young people

**98%**

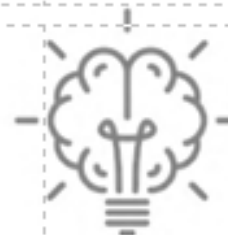


**98%**  
Agencies have a published  
safeguarding policy



Agencies have an information  
sharing procedure in place

**All**



Agencies have a number of  
mechanisms to test the use and  
awareness of policies and  
procedures amongst staff

**All** Agencies said that their staff  
know what to do if they have  
safeguarding concerns about a  
young person



**98%** said that all of their  
staff understand  
the thresholds of need



**All** Agencies with commissioned services  
have robust arrangements in place to  
ensure children and young people  
are safe



# Section 175 Audit : Topic 1

## Policies, Procedures & Thresholds

**130**   
**Completed audits**



**All**

Schools/Education settings  
have a named lead for  
safeguarding



**94%**

Schools/Education settings have a clear  
statement of their commitment to safeguard  
children and young people

**All**



Schools/Education settings have a  
published safeguarding policy

**All**



School/Education settings said that  
their staff know what to do if they  
have safeguarding concerns about a  
young person

**98%**



School/Education settings  
have a published behaviour policy  
which includes a statement about  
reasonable force

**All**

Agencies have a clear policy in place for  
cases where radicalisation or  
extremism is suspected, in line  
with the PREVENT agenda

LET'S  
**TALK**  
ABOUT IT

**All**

Agencies have a number of  
mechanisms to test the use  
and awareness of policies and  
procedures amongst staff



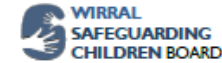
**94%**

Agencies have a clear statement  
of their commitment to safeguard  
children and young people

# Key WSCB Activity

## Learning from Case Reviews

- WSCB undertook one SCR (Children I and J) following the death of one sibling and injuries to another as a result of an attack by their mothers partner. SCR report published on website
- WSCB continues to undertake multi-agency learning reviews. 5 cases underway
- Learning published on the WSCB website



Learning from  
Serious Case Reviews

CHILDREN  
I and J - 2018

This case reminds professionals to:

- be curious about new adults in the household or attending meetings and appointments with children
- make sure any concerns about the safety of children are recorded and appropriately shared



### Summary of Case

Child I died shortly after his second birthday having been assaulted by his step-father. His twin sister, also the victim of an assault by their step-father survived. The perpetrator of the assaults was sentenced to life in prison.

A month after turning two years old, Child I was brought by ambulance to hospital. Emergency response services had been informed by his step-father (SFI) that Child I had drowned in the bath. Child I was found to be unconscious with no pulse. Efforts were made to revive Child I both at home and in hospital but Child I was unable to be resuscitated. Contrary to the history given by SFI, Child I was dry and partially dressed.

On arrival at the hospital Child I's step-father had not told any professionals that Child I's

Child J had been brought there earlier by their mother with head injuries. Staff dealing with Child J had become concerned that they could not reconcile Child J's injuries with the explanation that her mother had given and, in addition, they were concerned that her mother's account had changed.

At the point that Child I arrived in hospital, Child J was waiting for a CT scan and their mother had been made aware that staff were concerned for Child J's safety.

Following his death, Child I was found to have 65 unusual external injuries and catastrophic internal bleeding in his abdomen. On examination, Child J had was also found to have significant injuries to her head, wrist and externally. Both parents were arrested: their mother was later charged with child cruelty and their step-father with child cruelty and murder.

In accordance with Regulation 5 of Local Safeguarding Children Board Regulations 2006, Wirral Safeguarding Children Board (WSCB) instigated a Serious Case Review (SCR) in respect of Child I and Child J, in line with the criteria set out in Working Together 2015.



## Auditing

- WSCB has a rolling programme of multi-agency case auditing in place, and a programme of CSE/CE auditing
- Audits undertaken in 2017-18 – domestic abuse, children looked after plans, multi-agency thresholds, neglect, CSE and missing, child protection plans and child in need plans. Audits of plans also tested the use and impact of SFEF approach
- All learning from audits is published on the WSCB website

## Child Death Overview Panel (CDOP)

- 21 Child deaths in Wirral. Fewer than last year. All reviewed and learning published in CDOP Annual Report
- Plans underway to transfer responsibility for child death arrangements from WSCB to LA and CCG in 2019



## **Safeguarding Training**

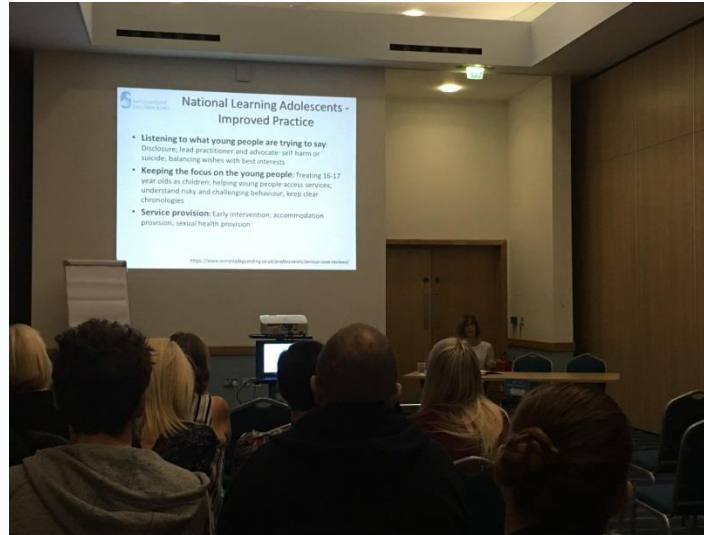
- In 17-18 the WSCB provided 101 training events and briefings attended by 1,681 professionals. About half are from the LA.
- The WSCB has an annual training programme including 20 different courses, and also offers 24 e-learning courses
- In 2018 the WSCB introduced an additional single agency training offer for schools which has delivered training to 600 staff since February

## **Local Authority Designated Officer for Allegations (LADO)**

- 339 allegations reported (328 in 16-17). No. has increased each year
- Categories: Physical abuse (55%), Emotional abuse (19%) Neglect (13%) and Sexual abuse (12%) main categories
- 50% of allegations are against school staff



# 4. Learning



WSCB Learning Event  
-September 2018



# Learning Organisation

- The WSCB is a learning organisation which continuously audits and evaluates activity, reviews cases, collects and analyses information, promotes good practice – including in 17-18 introducing the Supporting Families Enhancing Futures (SFEF) model for working with families
- The WSCB's learning is shared with partner agencies and published throughout the year on its website
- The WSCB also held a multi-agency learning event in September attended by over 600 professionals and members of the public
- The WSCB annual report sets out this activity, examples of which are illustrated as follows:





- Challenge for the WSCB is to evidence the impact of learning

## Measuring the quality of Child in Need plans

## Learning from multi-agency audits - Application of Thresholds

## Learning from multi-agency audits - Testing the awareness, identification & response to neglect

## Learning from multi-agency audits — Domestic Abuse

## Learning from multi-agency audits - Child Sexual Exploitation

## Learning from multi-agency audits-

The WSCB Performance Committee undertook an audit to measure the quality of Child Protection plans following the introduction of the Supporting Families Enhancing Futures (SFEF) model

## Positive Findings

## The Audit Findings Remind Us To:

- <https://www.wirral.gov.uk>  
<http://www.listenonline.co.uk>





# Learning from Reviews

## Local Learning from Serious Case Reviews Child Sexual Exploitation (CSE)

Learning from local reviews where Child Sexual Exploitation was a key factor tells us:

- The language YOU and others use will determine how you and other agencies respond. Avoid using phrases such as "putting themselves at risk" "lifestyle choices" as this makes

### Learning from Local Reviews - Teenagers and Criminal behaviour

Recent multi-agency reviews tell us:

- Be aware of the long term corrosive impact of neglect on children and young people.

### Learning from Local Reviews - Impact of Parental Substance Misuse

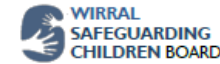
A recent multi-agency review tells us:

- Ensure you are familiar with and use evidence based assessment tools to help ensure the most effective intervention is provided
- Assess parental capacity to change as part of your holistic assessment
- Ensure intervention plans are smart, child centred and outcome focused
- Ensure records contain an up to date chronology of significant events to ensure timely recognition of concerns and sharing of information
- Be aware of disguised compliance and how to best work with families who display it
- Escalate concerns if you feel a child is at risk

**Safeguarding is Everyone's Responsibility....**

For more information

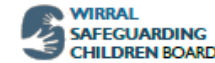
<https://www.wirralsafeguarding.co.uk/professionals/serious-case-reviews/>



Learning from  
Case Reviews **CHILD 7 - 2017**

This case reminds professionals to:

- be aware of the corrosive impact of long term neglect on children
- be familiar with the impact of the 'toxic trio'



Learning from  
Case Reviews **CHILD 8 - 2017**

This case reminds professionals to:

- be aware of 'disguised compliance' by families and the dangers of the 'start again' syndrome
- ensure holistic assessments include parents capacity to change



Learning from  
Case Reviews **CHILD 9 - 2018**

This case reminds professionals to:

- be familiar with the thresholds of need and multi-agency assessment frameworks including and Early Help Assessment Tool (EHAT) and the Team Around the Family Model
- be aware of the impact of learning disabilities on children's ability to assess risk
- be aware of all forms of exploitation including criminal exploitation

### Summary of Case

The Child 9 was 14 years old when he was arrested by Merseyside Police on the suspicion of having committed a Section 18 assault – assault with a deadly weapon. It was suspected that Child 9 had non-fatally stabbed another man outside of a pub in Birkenhead. Prior to the stabbing incident there had been a lot of agency involvement with Child 9 over the years and increasing concern about his behaviour.

Child 9 is the second oldest of four siblings. The family lived together with their parents until Child 9 was five years old when his parents separated. His father had had significant involvement with the criminal justice system prior to Child 9's birth and in the years afterwards. He had numerous convictions for a variety of offences including theft, assault/GBH, handling stolen goods, possession with intention to supply class B drugs, driving whilst disqualified, and other similar offences. The separation of the parents appears to have been acrimonious and Child 9 and his siblings witnessed several heated arguments including drunken arguments at home leading to the Police being called.

The evidence suggests that the early years of Child 9's life following the separation of his parents was not out of the ordinary and typical of many families, accepting that when Child 9's youngest brother was born his mother was raising four children by herself which would undoubtedly be very challenging. Despite this his mother's engagement with universal services was good. Particular issues with Child 9 did not become apparent until he was at least 9 years old.

When Child 9 was 8 years old there was increased agency involvement with his older brother who had been referred to the Community Paediatrician with suspected dyslexia, dyscalculia and significant motor coordination and attention deficits. Subsequent assessments followed included a short time in Team Around the Child (TAC).

- WSCB has also published agency case studies in the annual report



# Learning Event



- 693 professionals attended 23 presentations during the day, including a powerful drama presentation about exploitation by young people

- 21 stalls from partners were also available

- Feedback was very positive:

Really interesting event and a great opportunity to network with other organisations

We need this event annually-so much learning was shared today and the presentations were exceptional

Well done to the team who put this event together, it was outstanding and impactful

The professionals delivering the presentations were brilliant, I learnt a lot today

Very informative event, I have increased my knowledge and confidence

All presentations were very informative, clear and focused on solutions

What a fantastic way to showcase services in Wirral



# 5.The WSCB Business Plan

### Did you know?

Teenagers can be just as vulnerable and in need of our help as younger children

**Be aware of the needs of vulnerable teenagers**

**Safeguarding Teenagers is Everyone's Responsibility**

For more information:

WIRRAL SAFEGUARDING CHILDREN BOARD

### Did you know Forced Marriage is a crime?

**Be aware of when and how to report concerns**

**KEY CONTACTS**

Family Safety Unit 0151 6065442  
Merseyside Police 0151 7772288  
Forced Marriage Unit 0207 6060151  
Marine Helpline 0800 5986147  
Central Advice & Duty Team 0151 6062008

**You may only have One Chance to speak to a victim and One Chance to save a life**

Merseyside Forced Marriage and HBV Protocol:  
<http://www.wirral.gov.uk/downloads/4830>

WIRRAL SAFEGUARDING CHILDREN BOARD

### Be aware of the TOXIC TRIO of risks to the safety of children

Research has linked the prevalence of the toxic trio in the lives of the families at the centre of serious child maltreatment (SCM).

Information from 100 SCM reports, across the region in which Wirral Children's Futures are working:

- 84% of cases linked to domestic violence and mental health issues
- 84% of cases linked to mental health issues and mental health issues
- 84% of cases linked to mental health issues and mental health issues

**Safeguarding is Everyone's Responsibility**

For further information about WSCB training:  
<http://www.wirral.gov.uk/downloads/4830>

WIRRAL SAFEGUARDING CHILDREN BOARD

### Keeping Babies Safe in Baby Slings

For safe use of bag style slings make sure:

- It is tight
- You can always see baby's face by glancing down
- You can feel baby's head by just touching your head down
- Baby is not curled up
- Baby's chin is not against their chest

Remember TICKS:

- Tight
- It shows all faces
- Close enough to kiss
- Keep chin off the chest
- Supported back

**Safeguarding Babies is Everyone's Responsibility**

WIRRAL SAFEGUARDING CHILDREN BOARD

### Learning from Professional Practice

Neglect is the most common reason for Wirral children to be placed on Child Protection Plans

**Be aware of the signs of neglect.**

**Safeguarding is Everyone's Responsibility....**

For more information please read the WSCB guidance:  
<http://www.wirral.gov.uk/downloads/4830>

WIRRAL SAFEGUARDING CHILDREN BOARD

### CHILD SEXUAL EXPLOITATION

THE MORE YOU KNOW THE MORE YOU SEE

WIRRAL SAFEGUARDING CHILDREN BOARD

Wirral Safeguarding Children Board

Business Plan 2016-18

WIRRAL SAFEGUARDING CHILDREN BOARD

## Supporting Families Enhancing Futures

A model for working with Wirral families

The Beginner's Guide to SFEF

Supporting Families Enhancing Futures

Supporting Families

Right Service Right Time

WIRRAL SAFEGUARDING CHILDREN BOARD

GWSCB June 2017

Enhancing Futures





Priority Area	Activity	
<b>1. Children who are in need of help and protection are identified and responded to at the earliest opportunity by services effectively working together</b>	<ul style="list-style-type: none"> <li>Implementation of the Supporting Families Enhancing Futures Model of Child Protection</li> <li>Measurement of the effectiveness and impact of services on children, young people and their families</li> <li>Agencies evidence the use and impact of evidenced based tools to support practice and improve outcomes</li> </ul>	<ul style="list-style-type: none"> <li>Performance Information dataset developed to clearly demonstrate how safe children and young people are</li> <li>Review of the multi-agency thresholds of needs and testing of application and understanding</li> <li>Voice and feedback from children, young people and families informs the commissioning and delivery of services</li> </ul>
<b>2. Children are protected from exploitation, including Child Sexual Exploitation by a skilled workforce and the wider community is equipped to understand and respond to concerns</b>	<ul style="list-style-type: none"> <li>Children's services professionals and wider community have a good understanding of signs, symptoms and impact of CE and are aware of when and how to report concerns</li> <li>Multi-agency lead officers identified in every partner agency, and the workforce is competent and confident to respond to CE</li> <li>Agencies demonstrate the effectiveness of their response</li> </ul>	<ul style="list-style-type: none"> <li>Continual programme of auditing demonstrates swift and effective partnership working</li> <li>Perpetrators are identified, pursued and successfully prosecuted</li> <li>Children at risk of exploitation are identified at the earliest opportunity and victims are supported for as long as is needed</li> <li>Children and young people are involved in the testing and review of the effectiveness of services</li> </ul>
<b>3. Children and Young People who are Looked After, including those placed in Wirral by other Local Authorities are supported by agencies who effectively work together to keep them safe</b>	<ul style="list-style-type: none"> <li>Establish a care Home Governance group under the auspices of the safeguarding board</li> <li>WSCB can demonstrate how children and young people are positively listened to and responded to</li> <li>Children and young people who are subject to Private Fostering arrangements are well supported and safeguarded</li> </ul>	<ul style="list-style-type: none"> <li>Children and young people placed in Wirral by other local authorities are aware of the 'local offer' and support is provided to make sure they are safeguarding</li> <li>Children and young people currently living in Wirral whilst their immigration or asylum status is determined have access to services and are safeguarded</li> </ul>
<b>4. Through its effective governance and relationships with influential forums and groups the Wirral Safeguarding Children Board ensures all partner agencies meet the needs of Children and Young people</b>	<ul style="list-style-type: none"> <li>Findings from the Ofsted review of the effectiveness of the WSCB and subsequent improvement action plan improve the governance and influence of the safeguarding board</li> <li>The WSCB development days inform a clear improvement action plan which positively influences the governance and functioning of the safeguarding board</li> <li>The WSCB is prepared for the implementation of the forthcoming Children and Social Care Act</li> </ul>	<ul style="list-style-type: none"> <li>The WSCB can demonstrate, through its work with other influential bodies a clear and smart approach to the commissioning of services</li> <li>The WSCB actively supports the Council led partnership 2020 vision and can evidence the positive impact on and improved outcomes for children and young people</li> <li>Children and Young people are positive about the effectiveness of services they have received</li> <li>Statutory Safeguarding Partners develop new multi-agency safeguarding arrangements for implementation by September 2019</li> </ul>
<b>5. The WSCB discharges all of its statutory duties and ensures the effectiveness of arrangements to safeguard and promote the welfare of children and young people</b>	<ul style="list-style-type: none"> <li>The WSCB devises an improvement plan to address the 7 recommendations made in the Ofsted review of the effectiveness of the WSCB</li> <li>Work is completed through the Board and committees and other groups established to ensure actions derived from the recommendations are completed</li> </ul>	<ul style="list-style-type: none"> <li>The improvement plan is reviewed and challenged at each full meeting of the WSCB and the multi-agency improvement board</li> <li>The WSCB demonstrates progress and full achievement against all the actions within 18 months</li> <li>The WSCB develops Phase two of improvement plan to evidence impact of outcomes for children and young people</li> </ul>

# **End of Presentation**

## **Wirral Safeguarding Children Board Annual Report and Priorities**

**[www.wirralsafeguarding.co.uk](http://www.wirralsafeguarding.co.uk)**

**<https://www.facebook.com/WirralSafeguardingChildrenBoard/>**

**Follow us on Twitter @wirrallscb**

**Follow us on Instagram @wirrallscb**

