

# **Wirral Safeguarding Partnership**

## **New Multi-agency Arrangements**

**April 2019**

# Introduction

- The Children and Social Work Act 2017 replaces Local Safeguarding Children Boards (LSCBs) with new local safeguarding arrangements, led by the three statutory safeguarding partners:
  - Wirral Borough Council (LA)
  - Merseyside Police
  - NHS Wirral Clinical Commissioning Group (CCG)
- It also places a duty on child death review partners (LA and CCG) to review the deaths of children normally resident in the local area

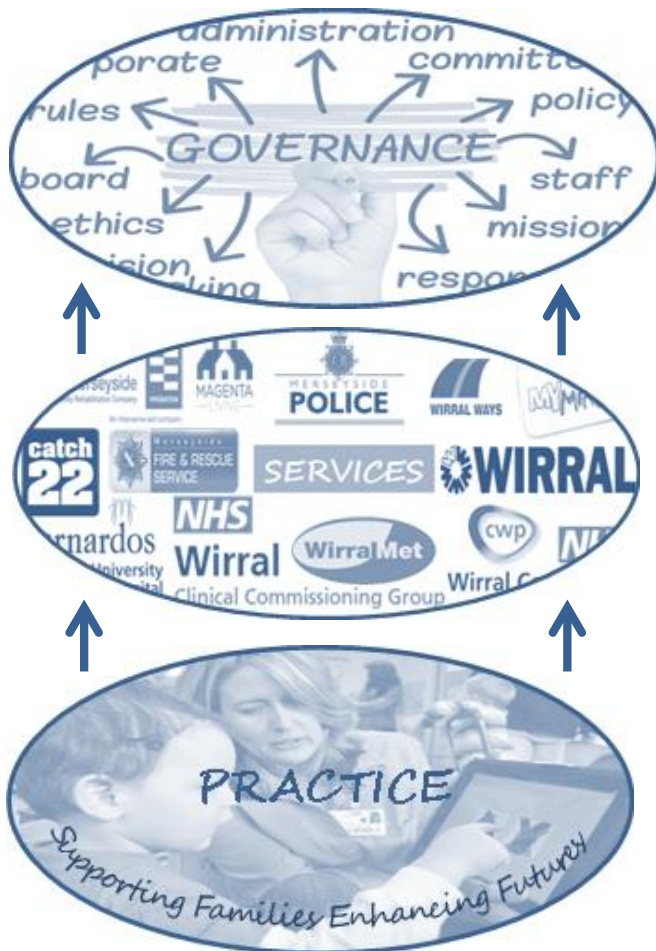
- The three safeguarding partners must set out how they will work together and with any **relevant agencies** to safeguard and promote the welfare of children
- All schools must be included in the arrangements
- The partners must also set out how their arrangements will receive independent scrutiny.
- Once agreed, the safeguarding partners must publish the arrangements.

# Purpose of new Local Arrangements

- To support and enable local agencies to work together in a system where:
  - excellent practice is the norm
  - partner agencies hold one another to account effectively
  - there is early identification of 'new' safeguarding issues
  - learning is promoted and embedded
  - information is shared effectively
  - the public can feel confident that children are protected from harm

# New Arrangements in Wirral

- There are 3 central parts to the model:



## 3. Governance

arrangements developed last to ensure they reflect how we want the model to work

## 2. Services

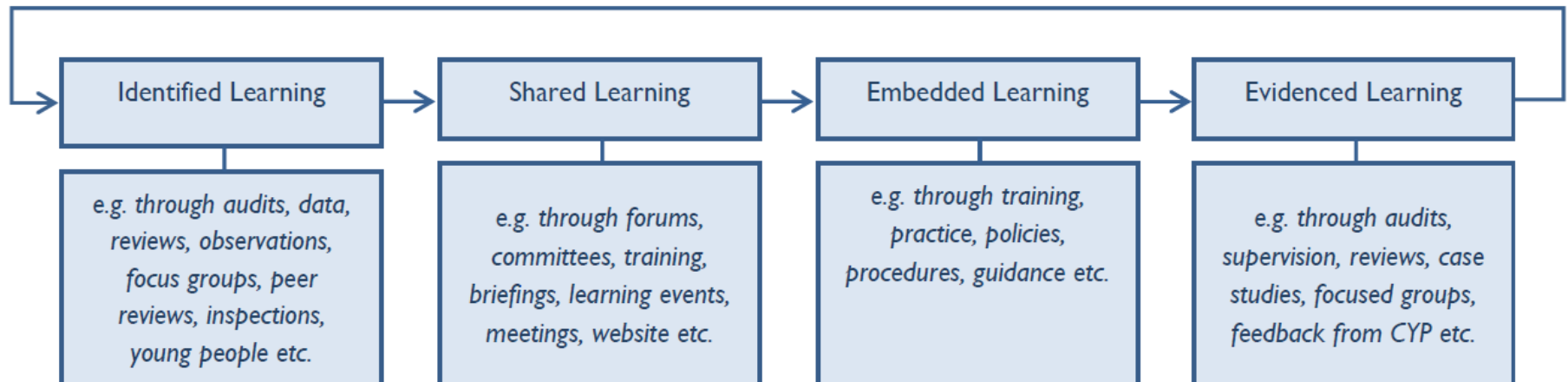
Strong partnership arrangements are crucial to the success of the model. This includes how we arrange services to ensure positive outcomes for children

## 1. Practice

Developing excellent practice will be the basis of the model. Supporting Families Enhancing Futures approach will sit at the centre of our approach and include shared values and behaviours

# A Learning Approach

- The model will include an ‘intelligence function’ to support an evaluation of the effectiveness of safeguarding. This will include data analysis, auditing, reviews and peer reviews, feedback from children and families, views of frontline professionals, regular learning events, inspection results and ‘what works’ from research.



# A Local Partnership Approach

The local MASA model will include approaches to :

- arrangements to ensure children receive the right help at the right time – including publication of thresholds
- a model and methodology for undertaking local reviews
- continued development and evaluation of SFEF
- arrangements for monitoring, scrutiny and challenge
- arrangements for embedding and testing of learning
- arrangements for multi-agency training
- local governance arrangements including relationships with other bodies and the mechanisms for independent scrutiny and annual reporting

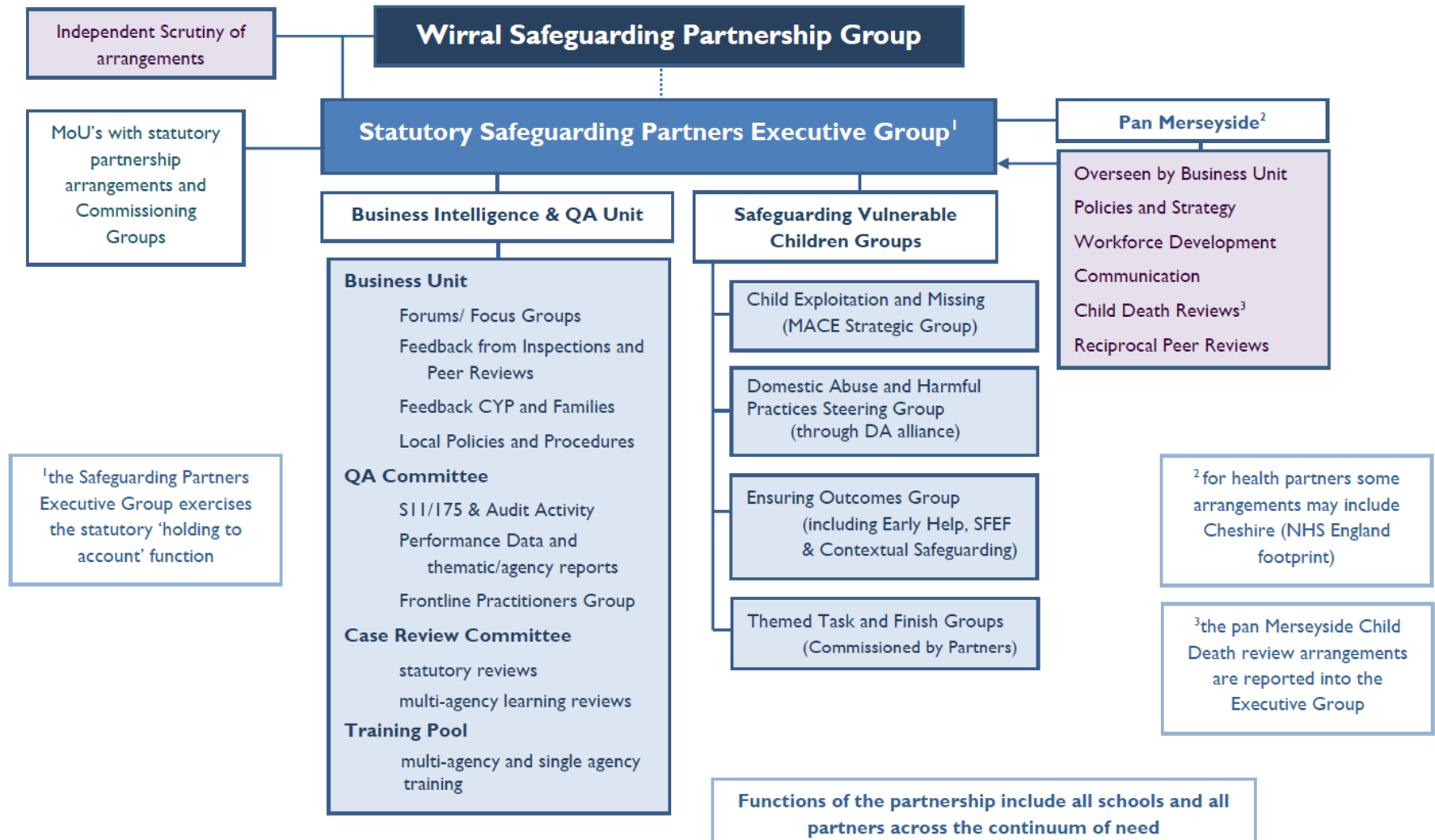
# A Regional Approach

Opportunities for local and regional collaboration will be pursued where beneficial. This will include:

- Policies and Strategy
- Workforce Development and sharing learning
- Communication
- Child Death Reviews
- Approaches to Section 11/175 Audits
- Approaches to case reviews
- Peer Reviews



# Overview of Model



# Key Features of Model

- **Statutory Safeguarding Partners Executive Group**
  - This is the statutory ‘holding to account’ group of the 3 statutory partners (LA, Police, CCG). Group is responsible for ensuring effective safeguarding arrangements are in place
- **Wirral Safeguarding Partnership Group**
  - This is the stakeholder group drawn from relevant agencies, includes lead member, lay members, and children/young people representation. Meets twice a year
- **Independent Scrutiny**
  - Maggie Atkinson will provide independent scrutiny of the arrangements and provide an annual report for partners. Updated protocol will be in place with OSC

# Key Features of Model

- **Business Intelligence and QA Unit**
  - Centre for providing and understanding multi-agency data and information (from audits, case reviews, peer reviews, feedback from families and professionals, performance information etc.)
- **Safeguarding Vulnerable Children Groups**
  - Groups undertake specific multi-agency activity (ensuring and testing safeguarding arrangements) on key areas including Early Help, exploitation, abuse, domestic abuse, neglect, SFEF and contextual safeguarding
- **Pan Mersey Groups**
  - Collaboration on approaches to policies and strategy, workforce development, CDOP, Case Reviews, Communication etc.

- **January 2019**
  - 28<sup>th</sup> Jan – OSC Spotlight Session
  - 31<sup>st</sup> Jan – Consultation ends
- **March 2019**
  - 25<sup>th</sup> Jan – Agreement of Model at Cabinet
  - 29<sup>th</sup> March – Publication of Model
- **April 2019**
  - From 1<sup>st</sup> – Introduction of new arrangements in shadow form
- **August 2019**
  - 31<sup>st</sup> August - WSCB stands down at midnight
- **Sept 2019**
  - 1<sup>st</sup> Sept – New statutory arrangements in place