

WIRRAL COVID-19 OUTBREAK PREVENTION & CONTROL PLAN

JUNE 2020

KEEPING WIRRAL WELL

COVID-19 has not gone away. As well as continued alertness we need to prevent local outbreaks and be prepared for when they occur.

On the 22nd of May the Government requested individual COVID-19 Outbreak Plans be developed by all councils with funding to support them to be delivered.

This local outbreak plan gives an overview of how we will work to keep Wirral well and is supported by a detailed action plan which describes what action will be taken and how resources will be used.

COVID-19 OUTBREAK PLAN

What is the purpose of the outbreak plan?

To prevent transmission of COVID-19 within the community and ensure an effective and coordinated approach to a COVID-19 outbreak.

What does the Plan aim to do?

Sustain the decrease in infection rates

Sustain a reduction in the risk of transmission

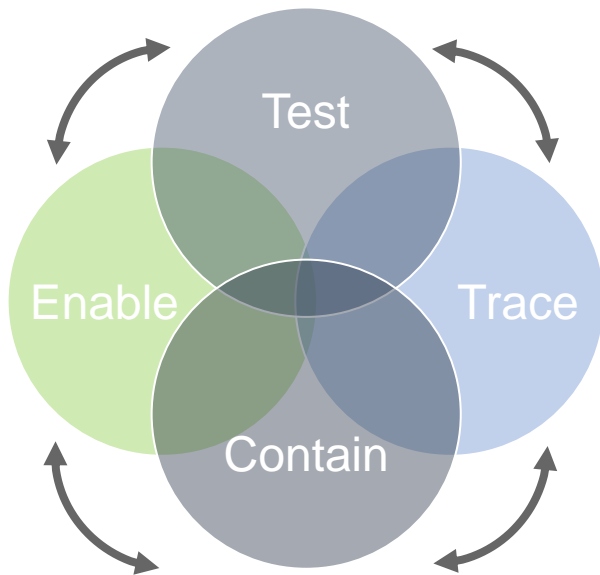
Ensure vulnerable people are protected in community settings

The Plan is based on our three key principles to ***prevent, control*** and ***manage*** outbreaks of COVID-19 and will continue to develop reflecting the changing nature of the virus, its progression and other local factors.

We will need to work collectively as a community to continue to stop the spread of the virus.

Local outbreak plans are a core focus of NHS Test and Trace

An integrated and world-class COVID-19 Test and Trace service, designed to control the virus and enable people to live a safer and more normal life



| | |
|---------|---|
| Test | Rapid testing, at scale, to identify and treat those with the virus |
| Trace | Integrated tracing to identify, alert and support those who need to self isolate |
| Contain | Identify outbreaks using testing and other data and contain locally and minimize spread |
| Enable | Use knowledge of the virus to inform decisions on social and economic restrictions |

Continuous data capture and information loop at each stage that flows through Joint Biosecurity Centre to recommend actions

Underpinned by a huge public engagement exercise to build trust and participation

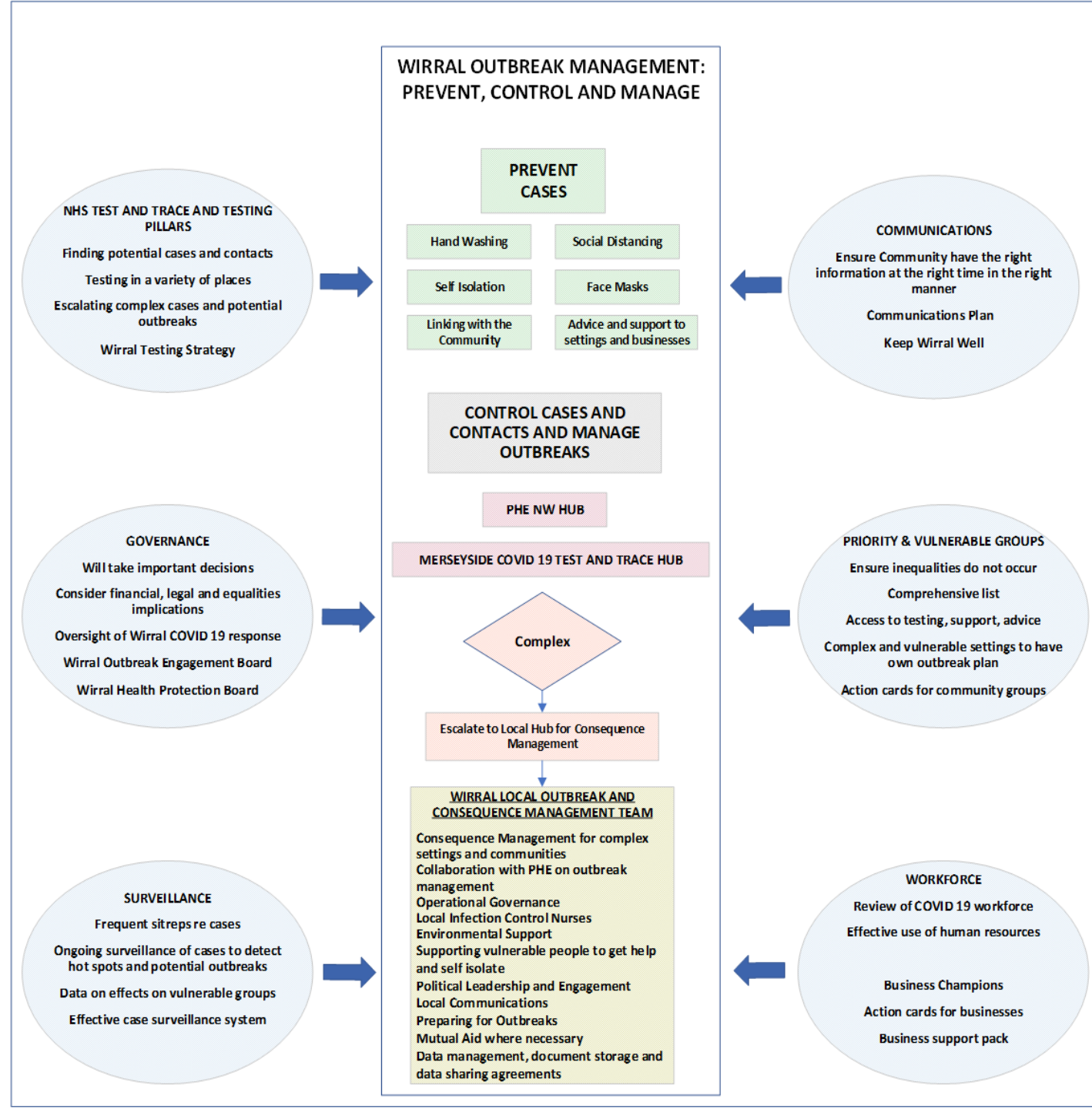
Note: Test, Trace, Contain, Enable diagram is illustrative only

National, Regional and Local COVID-19 Outbreak Management

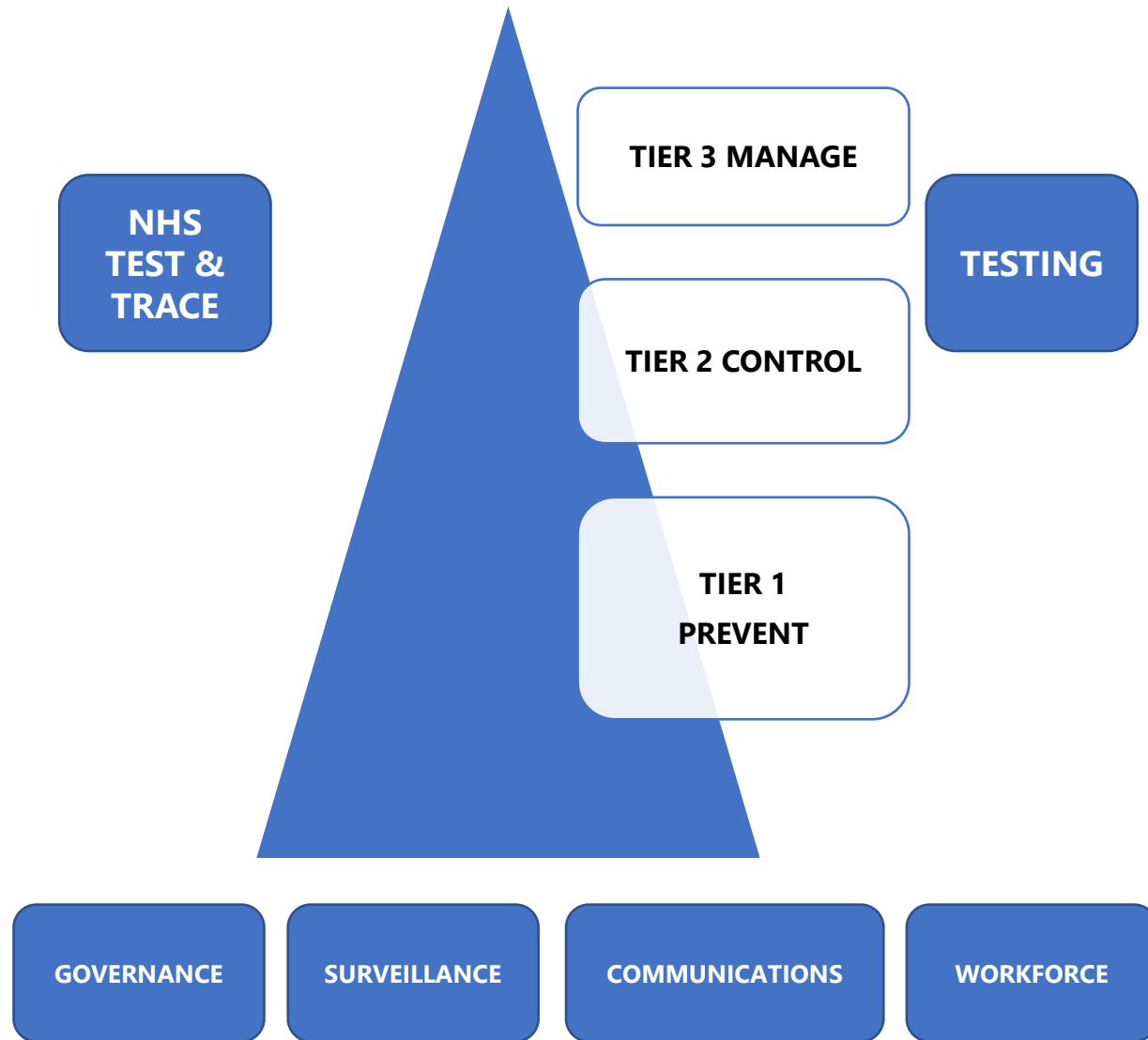
NHS Test and Trace is the national system that follows up confirmed cases, identifies contacts and provides isolation advice.

Public Health England (PHE) is notified by NHS Test and Trace about outbreaks. PHE will follow up contacts and conduct an initial investigation.

Wirral Council will support the management of local outbreaks reported by PHE as well as follow up any outbreaks reported directly to the Council.



COVID-19 OUTBREAK PLAN FRAMEWORK



Prevention is the single most effective method of reducing transmission and outbreaks of COVID-19, through information, preparation, advice and communication

Controlling further transmission of COVID-19 when there is a suspected or confirmed case

Managing a suspected or confirmed outbreak of coronavirus (COVID-19) with specialist support and advice

Priority Actions

1

Care Homes and Schools

Prevent and manage outbreaks in specific individual settings (e.g. schools, care homes)

2

High Risk Workplaces, Communities and Locations

Prevent and manage outbreaks in other high-risk locations, workplaces and communities

3

Mobile Testing Units & Local Testing approaches

Deploy local testing capacity optimally

4

Contact Tracing in Complex Settings

Deliver contact tracing for complex settings and cohorts

5

Data Integration

Access to the right local data to enable the other 6 themes and prevent outbreaks

6

Vulnerable People

Support vulnerable people and ensure services meet the needs of diverse communities

7

Local Boards (including Communication & Engagement)

Take local actions to contain outbreaks and communicate with the general public

OUTBREAK PREVENTION

**Prevention is the most
effective method of stopping
transmission and outbreaks
of COVID-19**

We will continue to work with our community to promote protective measures, such as handwashing and social distancing, as well as provide advice about what to do if people develop symptoms.

We will continue to support local organisations, businesses, community groups and the faith sector to safely reopen advising on risk assessments, providing guidance and advice.

We will seek assurance that high risk settings (the NHS, Care Homes and Schools), communities and locations have robust outbreak plans in place and are prepared to manage COVID-19 outbreaks.

We will develop a local testing strategy that provides an accessible, local and timely service prioritising those working in complex settings and those living in high risk communities, places and locations.

We will provide dedicated information and advice to local organisations and train 'COVID-19 Champions' in basic infection control to support protective measures that prevent infection and enable rapid response to an infection and or outbreak should it occur.

OUTBREAK CONTROL

We will develop a local testing strategy to ensure that when people have symptoms they can get local and timely access to testing.

We will provide dedicated advice, guidance and support when a case is suspected or confirmed to limit the spread of the virus.

We will work with high risk workplaces, communities and locations to ensure that they have robust outbreak plans and are prepared to manage COVID-19 outbreaks.

We will support organisations to implement the appropriate steps to prevent isolated cases leading to outbreaks.

OUTBREAK MANAGEMENT

We will establish a local outbreak management hub that will support Public Health England (PHE) to control outbreaks and take action to limit the impact of outbreaks reported directly to the Council, following up cases and their contacts.

Our local testing strategy will support the management of testing in outbreak situations.

We will establish a surveillance system that captures real time information to allow us to identify outbreaks in a timely way, informs targeted support and our local testing strategy.

We will lead incident and outbreak management, ensuring corrective and protective action is taken, reviewing outbreaks and ensuring lessons are learnt and implemented.

We will use our legal and enforcement powers to contain outbreaks when we need to.

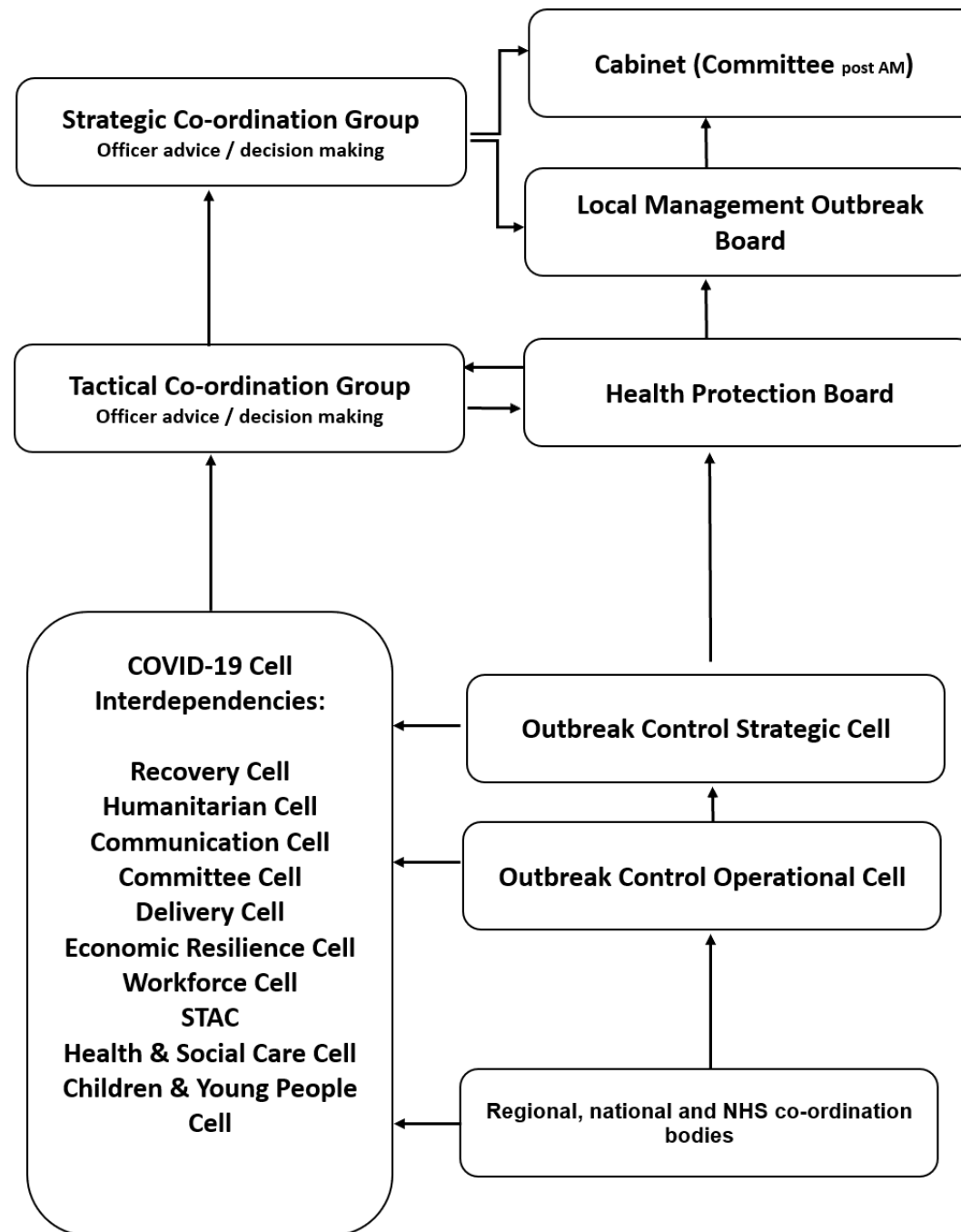
GOVERNANCE

We will establish a Local Outbreak Engagement Board which will oversee this Plan and its delivery, holding organisations to account and taking decisions and action to limit the virus spread.

We will work with local organisations and neighbouring areas to work together to prevent and manage outbreaks through governance arrangements overseen by the Local Outbreak Engagement Board which will interact with the Cheshire and Merseyside reporting arrangements.

We will use our legal and enforcement powers to take action to contain the virus when required.

GOVERNANCE



SURVEILLANCE

We will implement an information system to ensure that national, regional and local information flows enable effective case management and outbreak prevention, control and management.

We will use local intelligence to develop our response to prevent outbreaks and inform the ongoing development of this Plan, protective measures and to inform the local testing strategy.

COMMUNICATIONS

We will roll out the Keep Wirral Well campaign to promote continued protective measures and behaviours.

We have developed a proactive communications plan that will support all aspects of this Plan, including information and advice through to communicating in a complex outbreak situation.

We will provide toolkits for business, the community and faith sector to support safe reopening and delivery as well as rapid response to cases and outbreaks in all settings.

WORKFORCE

We will train 'COVID-19 Champions' across all settings to support prevention of outbreaks, rapid control of cases and timely response to identified outbreaks.

We will provide advice, information and support via a dedicated team.

We will establish a Local Outbreak Management Hub providing specialist public health, infection control and environmental health wrap around support in an outbreak situation.

We will develop a flexible and robust local workforce that is able to deal with outbreaks at an unprecedented scale across multiple locations and facility types simultaneously.

Cheshire & Merseyside Test & Trace Operational Delivery

Local Outbreak and Consequence Management Team

(1 per Local Authority)

Consequence Management for complex settings and communities
Collaboration with PHE on outbreak management
Operational Governance
Local Infection Control Nurses
Environmental Support
Supporting vulnerable people to get help and self isolate



Political Leadership and Engagement
Local Communications
Preparing for Outbreaks
Mutual Aid where necessary
Data management, document storage and data sharing agreements

Cheshire COVID-19 Test and Trace Team

Merseyside COVID-19 Test and Trace Team

Functions required in both teams covering 9am – 5pm, 7 days a week, PHE to cover out of hours

Contract Tracing & Outbreak Management (Including On call Cover)
Health Protection Specialist support and direct relationships
Data management, document storage and data sharing agreements
Collaboration with PHE

Admin, Business Support & HR
Links to LRF priorities
Preparing for and supporting Outbreaks
Mutual Aid where necessary

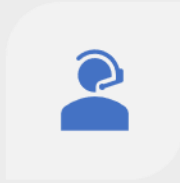
Champs COVID-19 Test and Trace Collaboration (Shared function across Cheshire and Merseyside)

Clinical Governance
Ensuring consistency in pathways & SOPs
Training & workforce development
Collaboration with PHE
Oversight of the hubs and service delivery

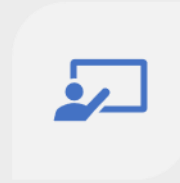
Alignment with C&M Testing strategy
Alignment with data and case management system
Single data / case management IT solution
Ensuring efficient communication
Mutual Aid where necessary

Local Outbreak Hub

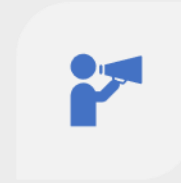
To prevent, control and
manage outbreaks across all
settings in Wirral



CALL CENTRE: ADVICE
AND GUIDANCE



TRAINING LEAD



COMMUNICATIONS
LEAD



PUBLIC HEALTH
SPECIALISTS



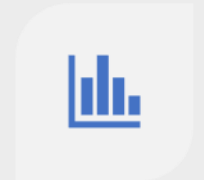
ENVIRONMENTAL
HEALTH OFFICERS



INFECTION
PREVENTION
CONTROL SPECIALISTS



ADMINISTRATOR



DATA ANALYST

FOR MORE INFORMATION

For information and advice on COVID Outbreak Prevention and Management please contact:

Helpline: Mon to Fri 9am - 5pm on 0151 666 5050

Email: covid19enquiries@wirral.gov.uk

Webpage: www.wirral.gov.uk/covid19outbreak

For the outbreak prevention and management action plan please contact: wirralpublichealth@wirral.gov.uk

For media enquiries please contact:
pressoffice@wirral.gov.uk