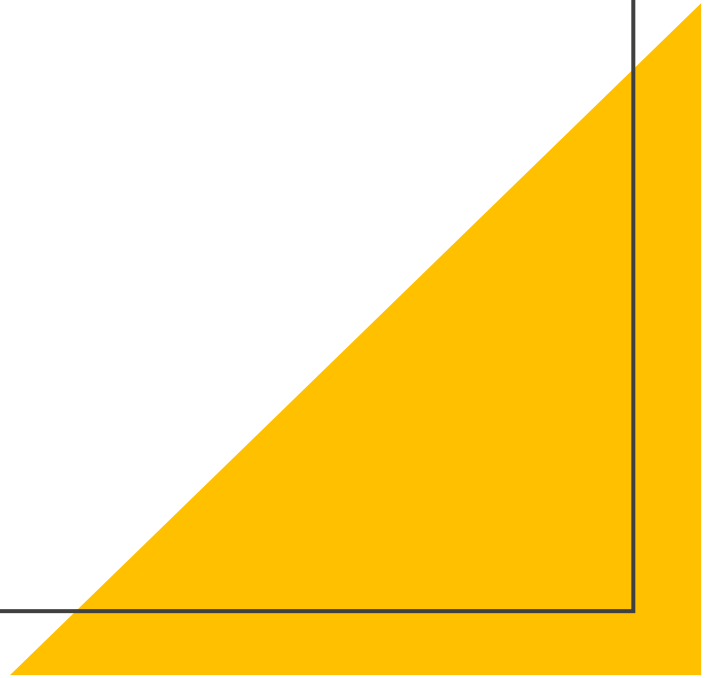


Wirral Road Safety Plan Update

Jan 2021



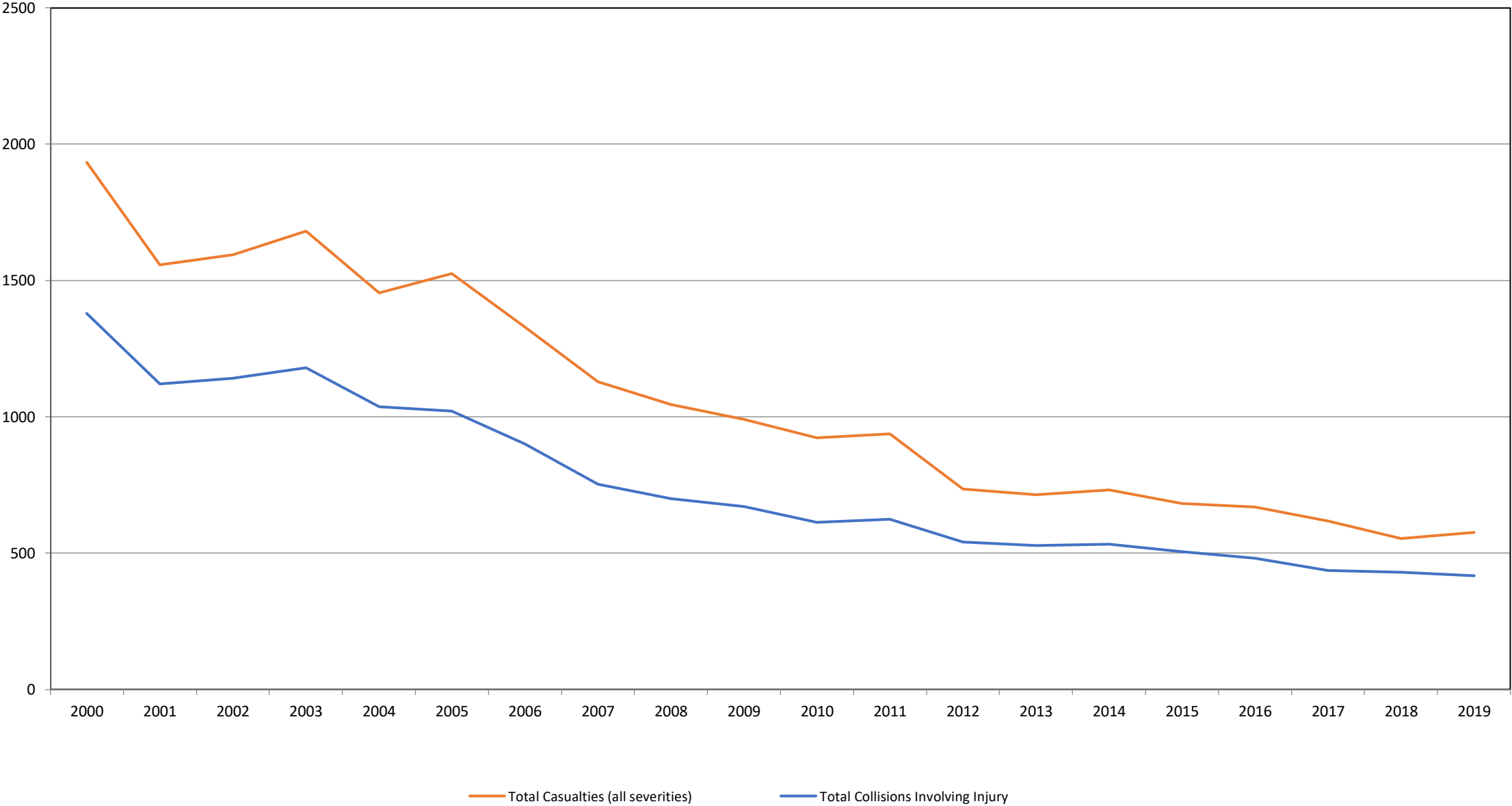
Context

- Wirral Road Safety Plan published April 2018
- Wirral's Road Safety Plan forms part of The Wirral Plan – A 2020 Vision
- Wirral's Transport Strategy
- The Liverpool City Region Road Safety Strategy

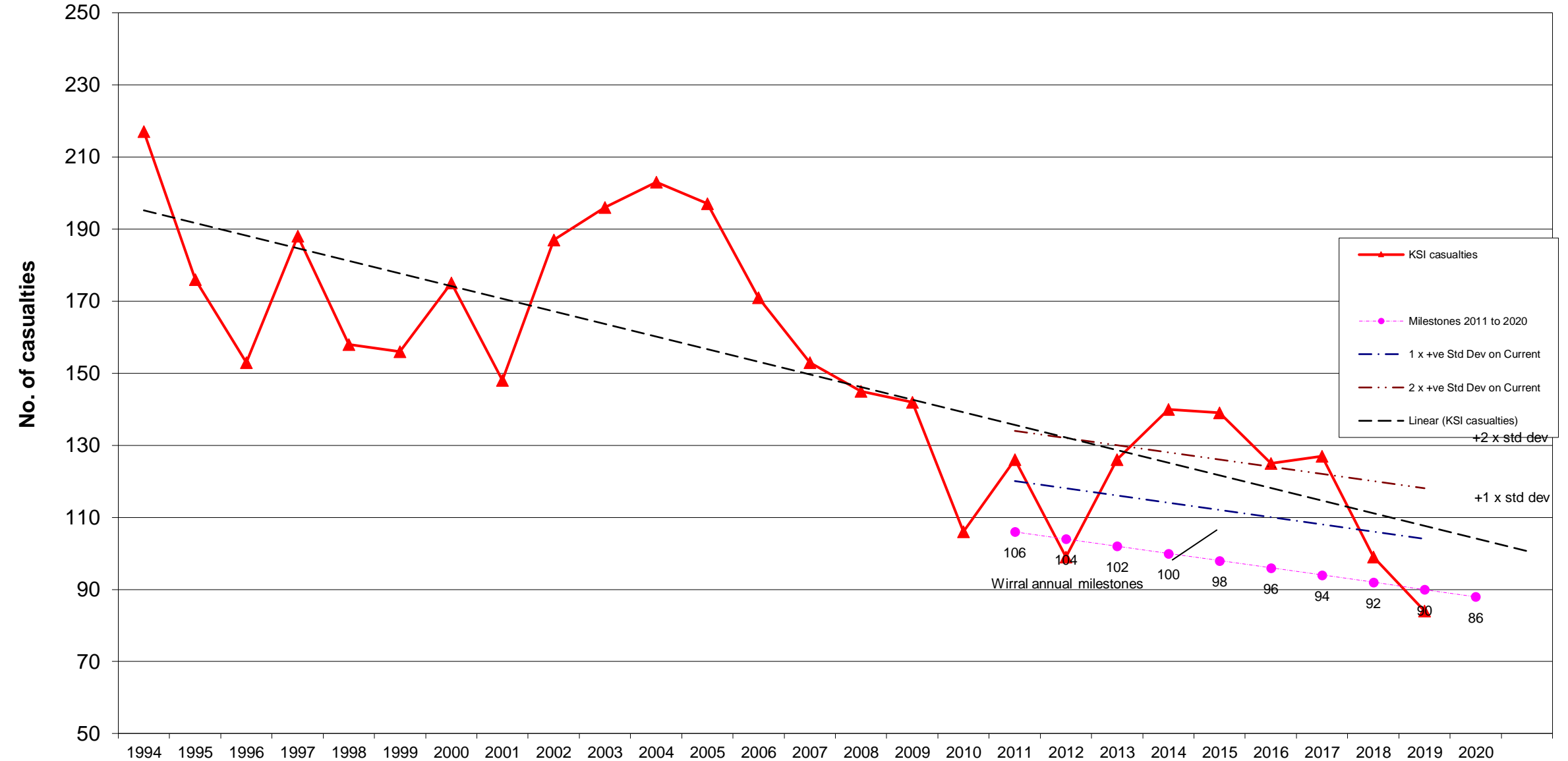
A safe transport network is a key focus within the Wirral Plan. However, improving road safety is not just the responsibility of the Council; it is a responsibility for everyone who uses the network

Shared roads, shared responsibility *(not necessarily equal responsibility)*

Total Injury Collisions & Casualties

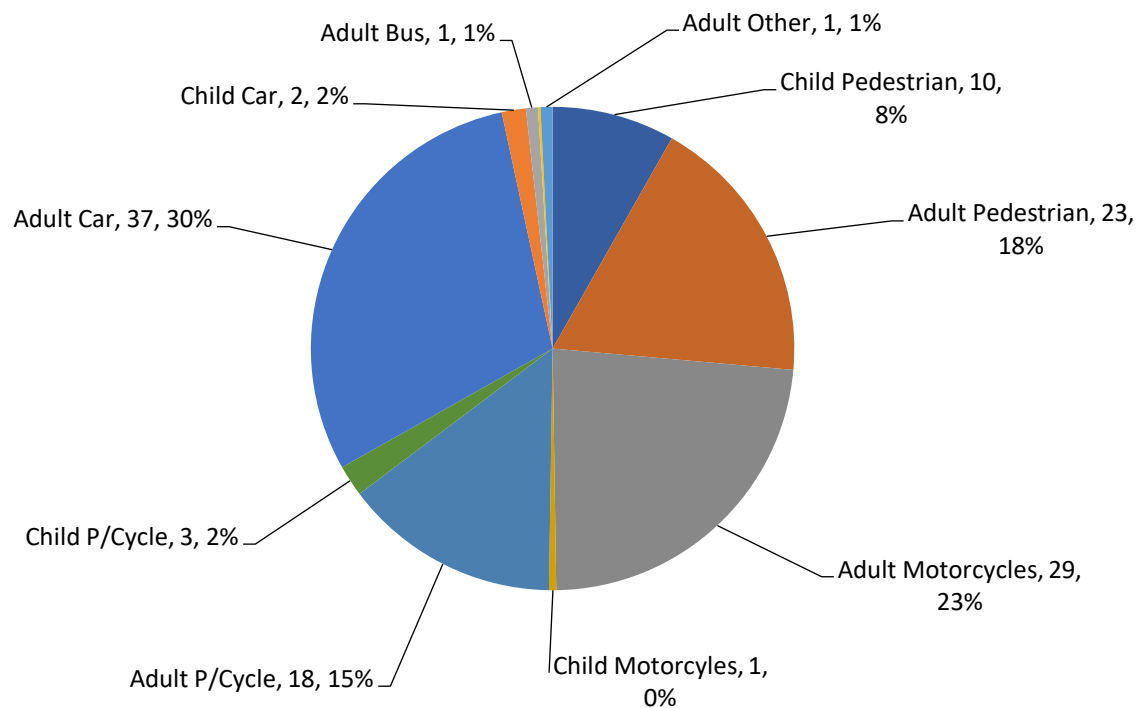


All Killed & Seriously Injured (KSI) Casualties

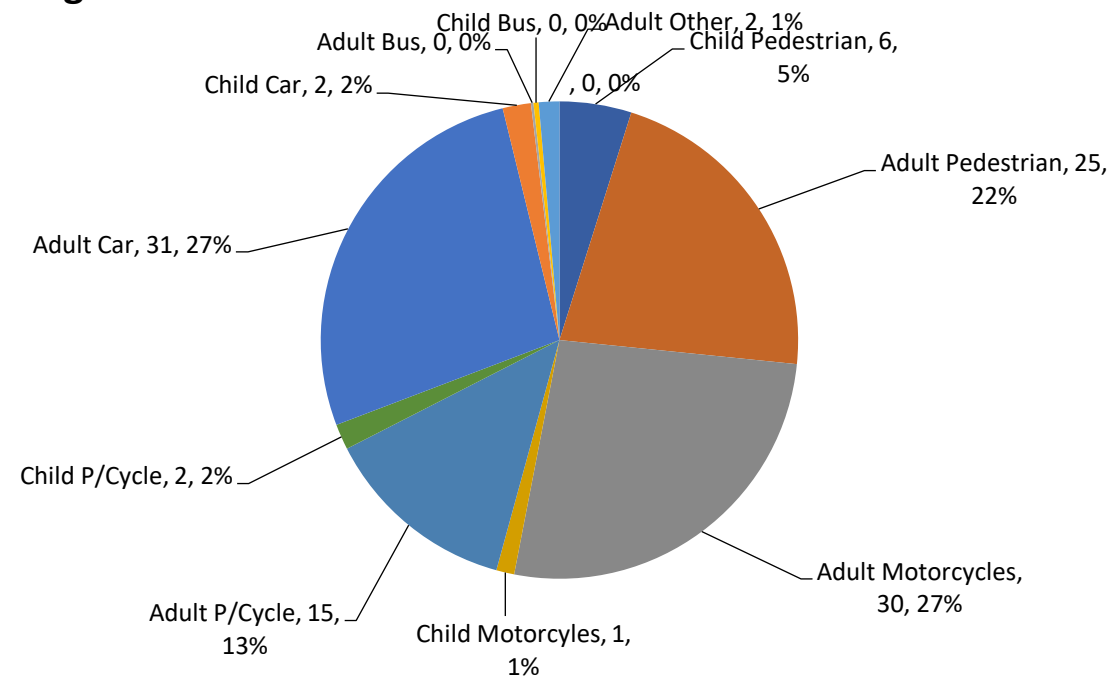


Average numbers of people Killed & Seriously Inured by Road User Group

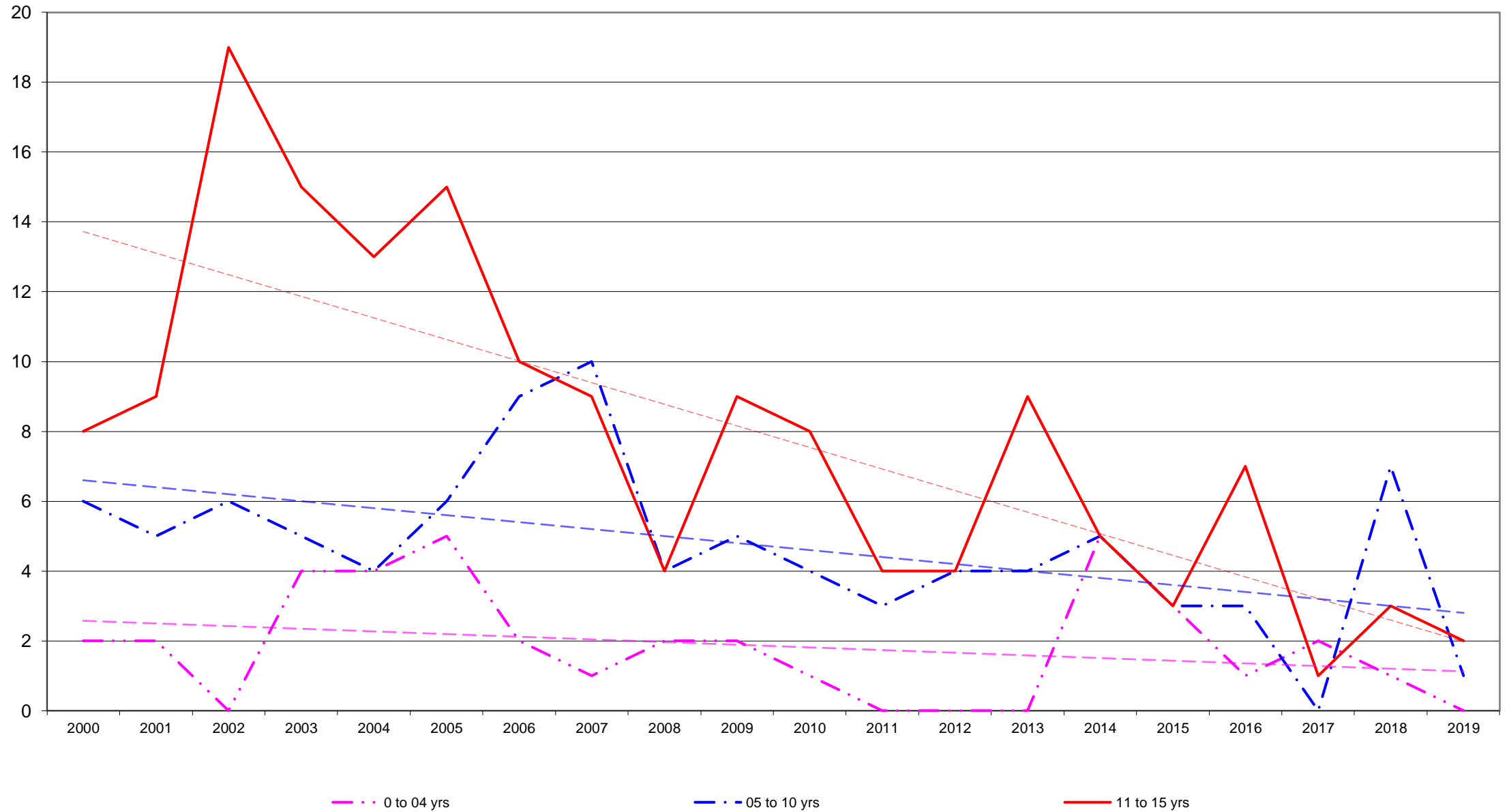
Average KSI Casualties 2012-2015



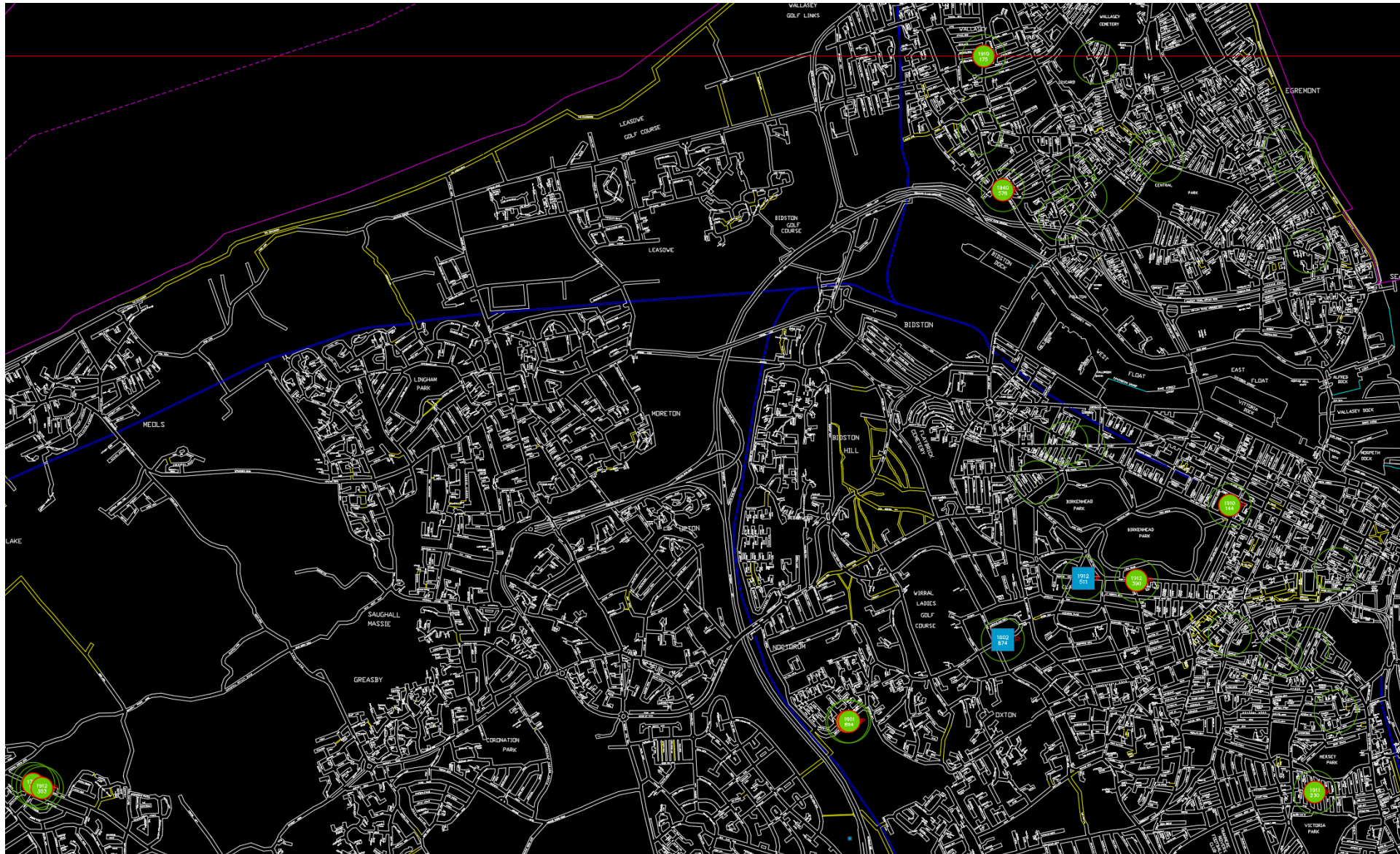
Average KSI Casualties 2015-19



Child Pedestrians Killed & Serious Injury (KSI) Casualties



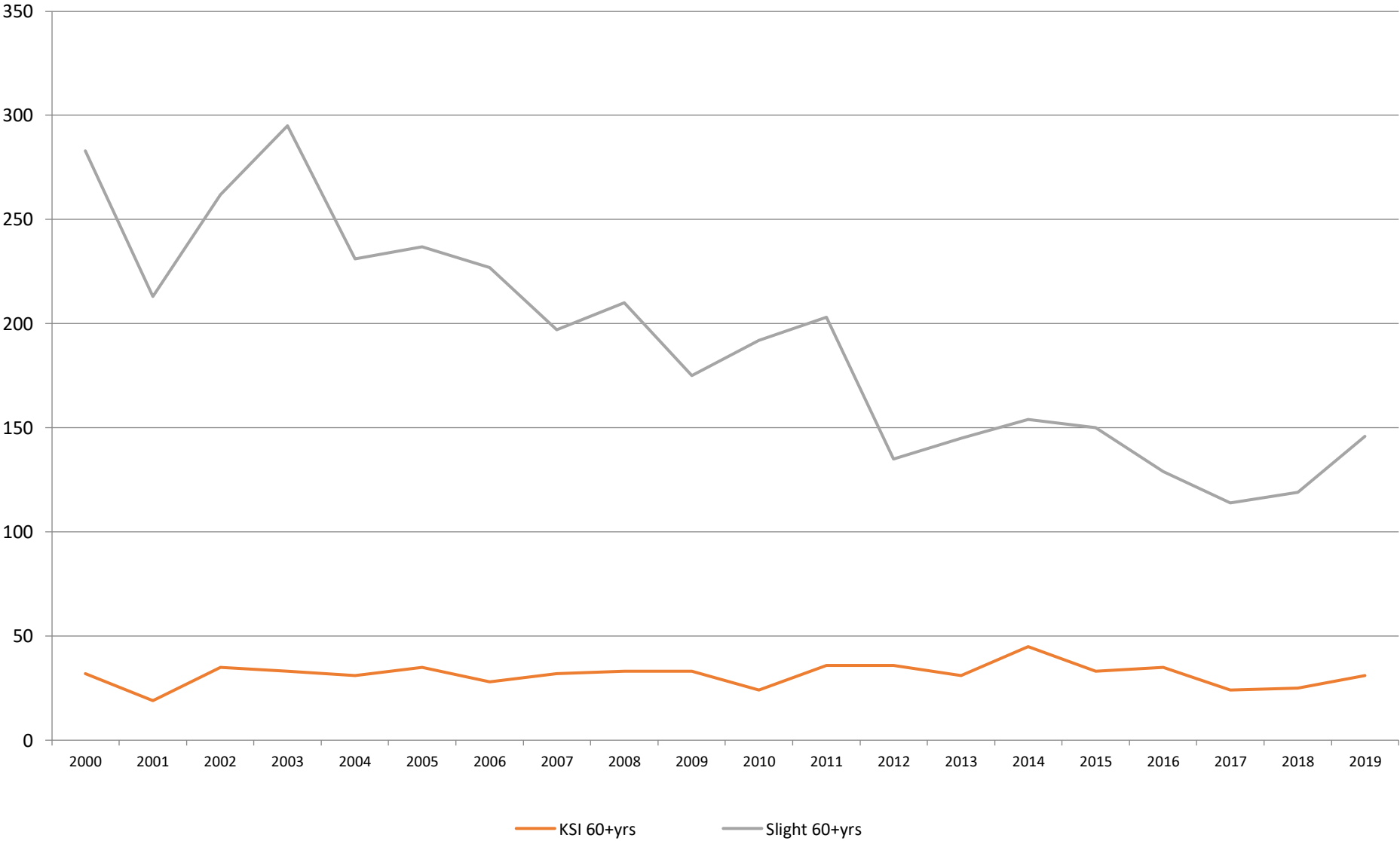
Child peds near schools (Mon-Fri) 5 years



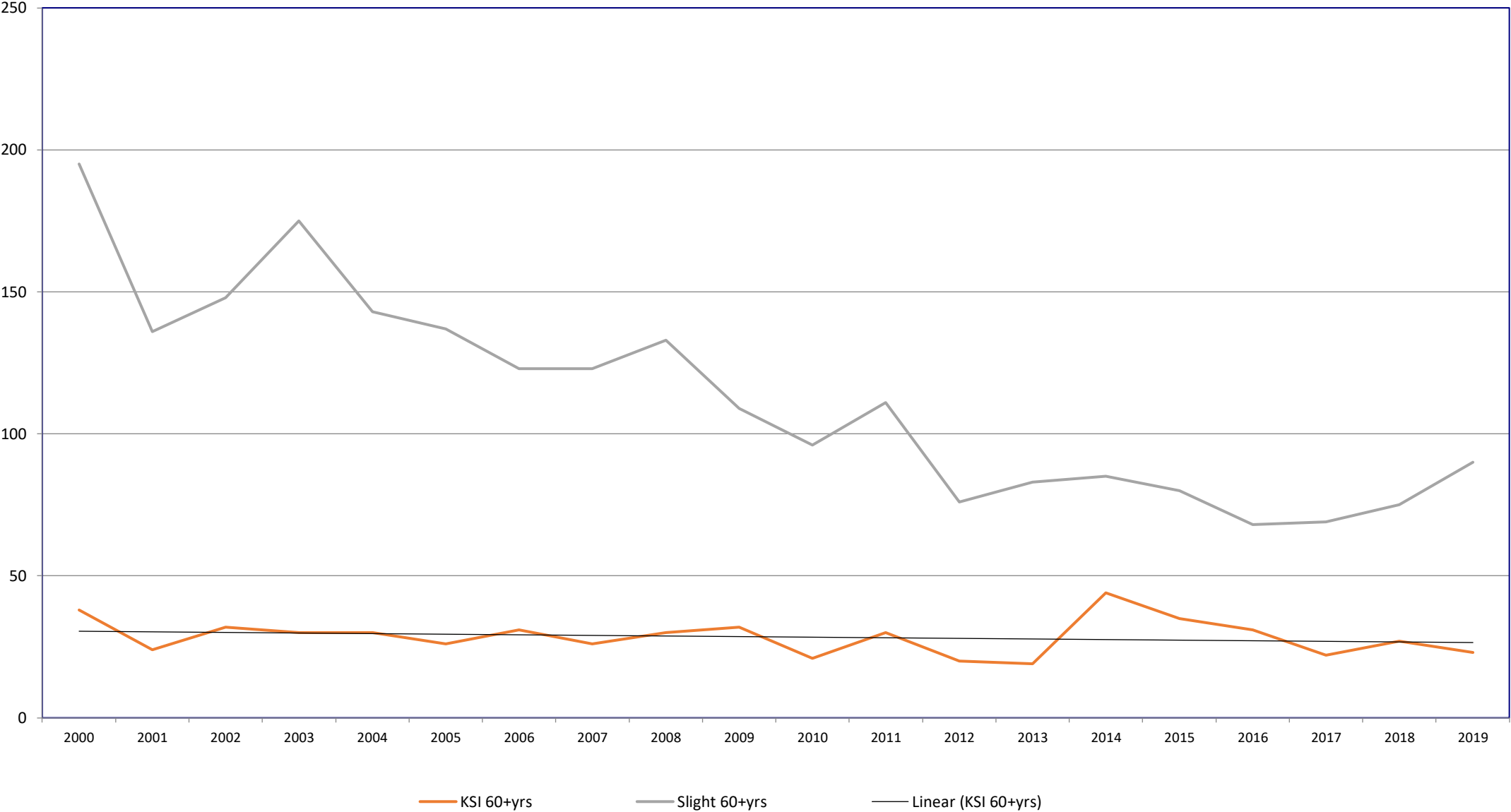
Wirral Pedal Cycle Casualtes



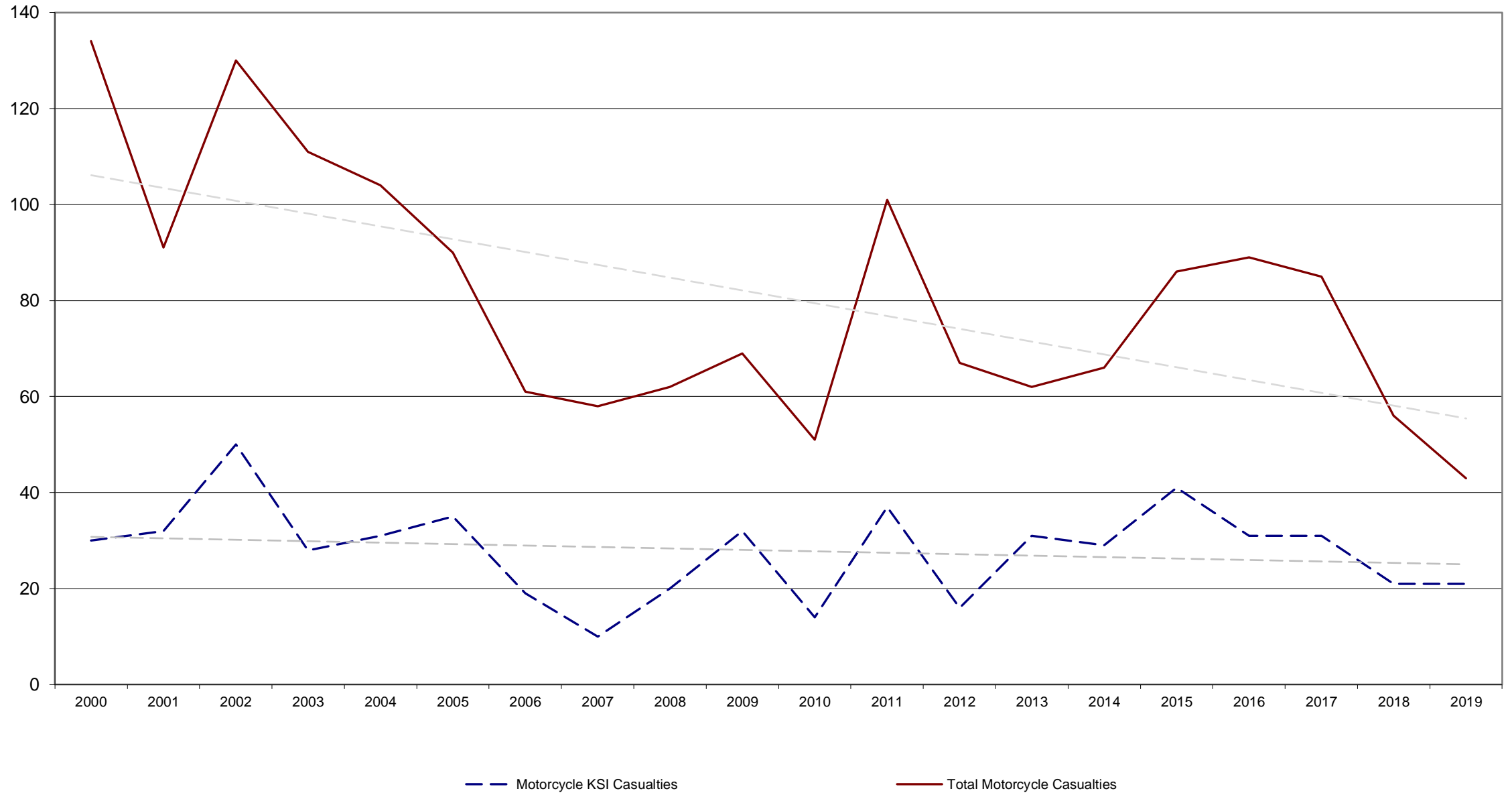
Collisions involving a driver 60+



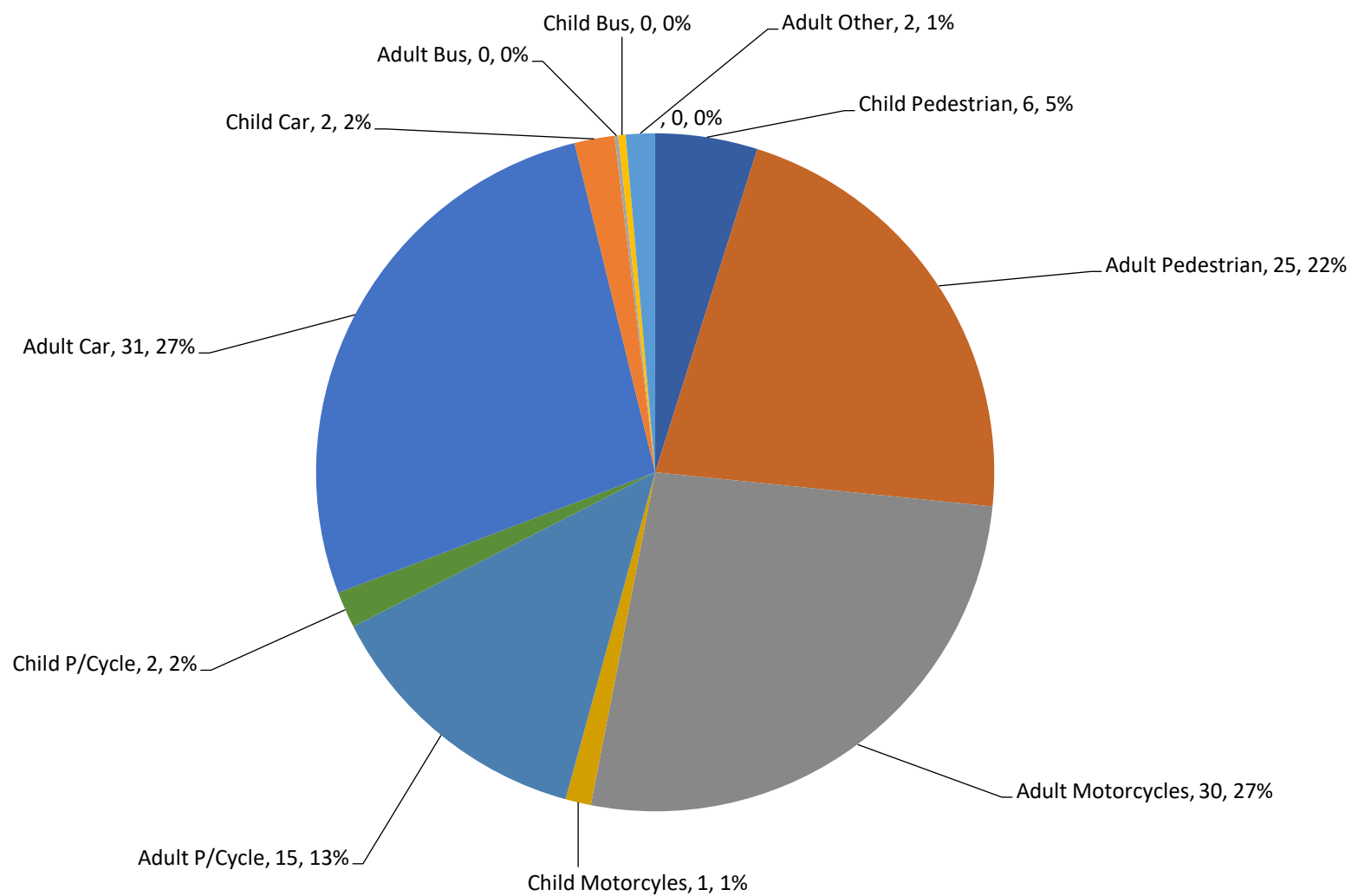
Senior Road User Casualties (60+ yrs)



Motorcycle Casualties (all power 2 wheel)

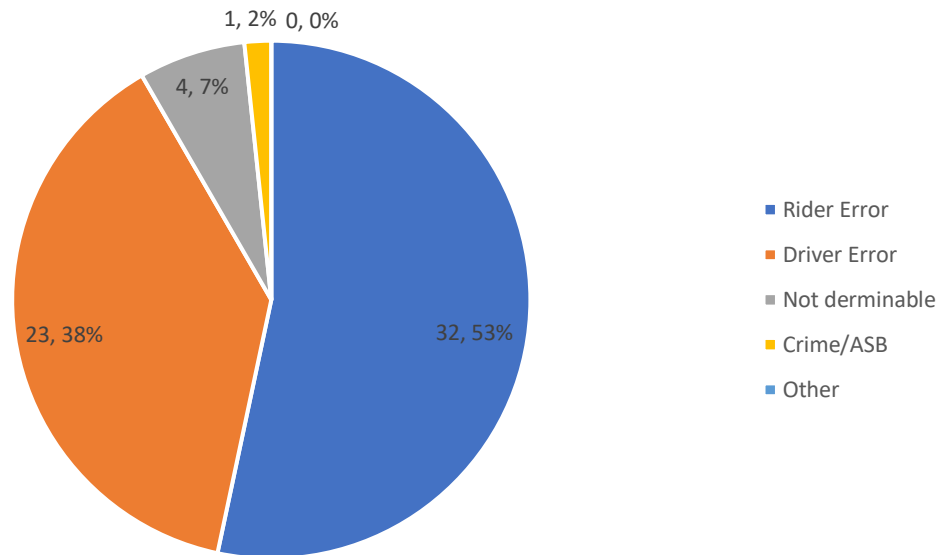


Average KSI Casualties 2015-19

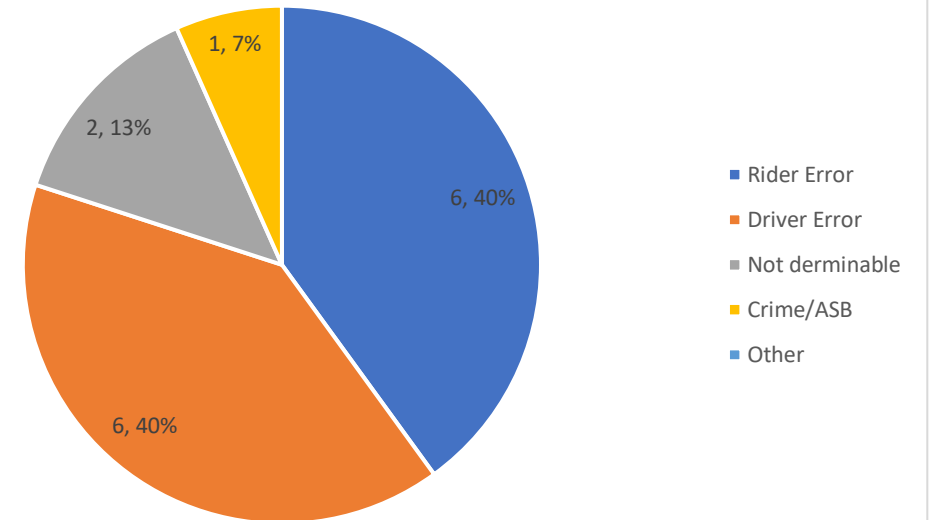


2019 data – Pedal Cycle Collisions: high level analysis based on likely fault of participants

Pedal Cycle Collisions (All Severities) by 'Fault' 2019

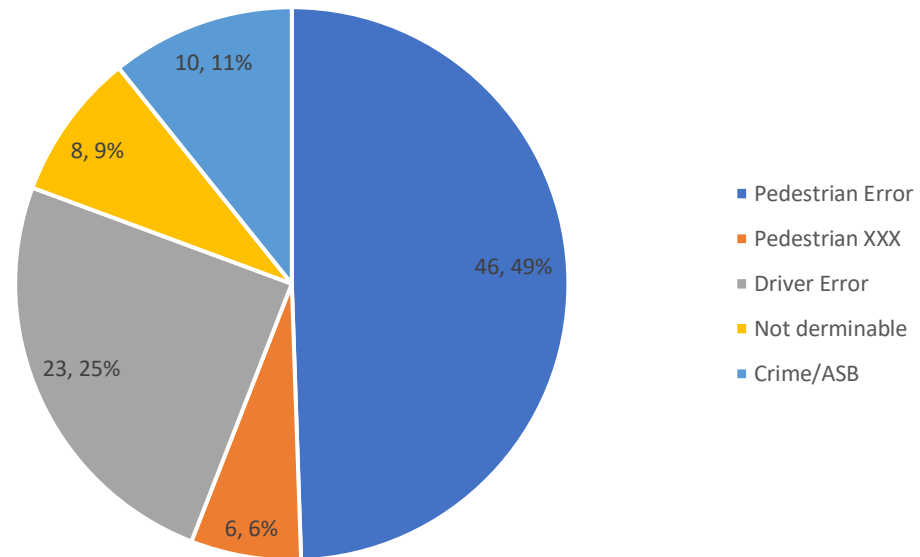


Pedal Cycle Collisions (KSI) by 'Fault' 2019

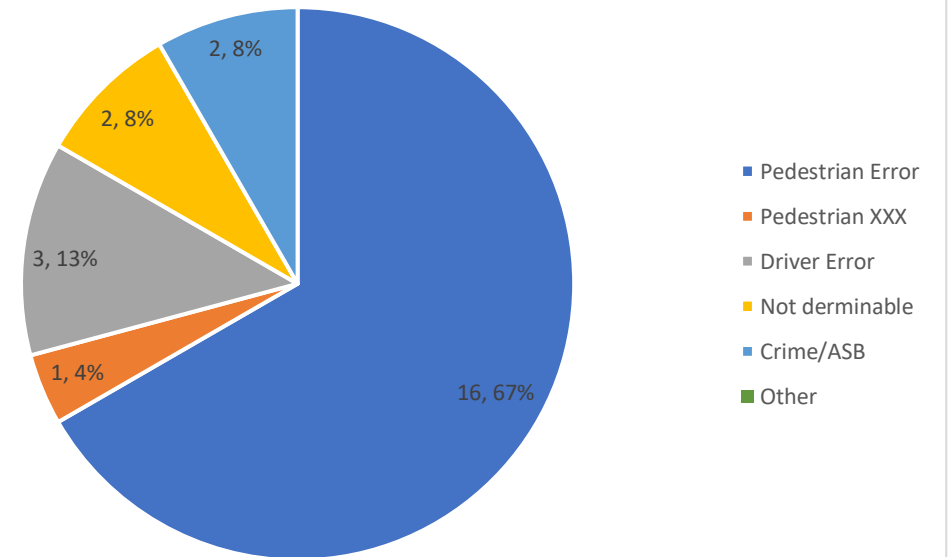


2019 data – Pedestrian Collisions: high level analysis based on likely fault of participants

Pedestrian Collisions (All Severities) by 'Fault' 2019

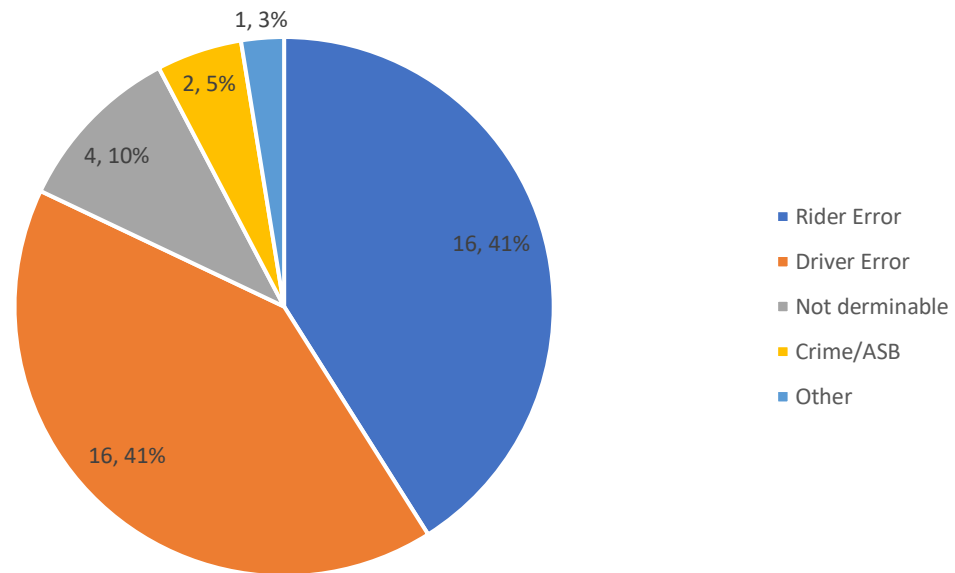


Pedestrian Collisions (KSI) by 'Fault' 2019

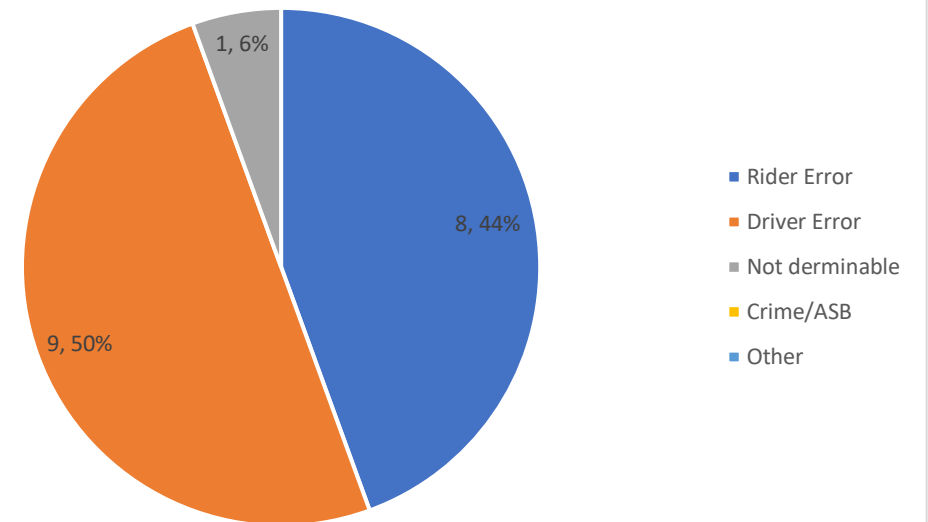


2019 data –Motorcycle Cycle Collisions: high level analysis based on likely fault of participants

Motorcycle Collisions (All Severities) by 'Fault' 2019



Motorcycle Collisions (KSI) by 'Fault' 2019



Ongoing & New Priorities



Ongoing & New Priorities

Children & Young People	<p>Pre-school/early years focussing on parents & carers</p> <p>Year 6 Primary education: <i>pedestrian, cycle & bus safety – transition to senior schools</i></p> <p>Years 7 & 10 Secondary education & colleges: <i>pedestrian, cycle, bus and in car safety from start of sec education through to pre-driver/passenger issues</i></p> <p>Schemes to encourage sustainable transport for school and lifelong choices.</p>	<p>Delivery to approx. 7500 children annually by the road safety team</p> <p>£0 budget</p>
Pedal Cyclists (Children) Pedal Cyclists (Adults)	<p>Cycle training provided at schools <i>(via LCA contractor BikeRight)</i></p> <p>Cycle training provided 1-1 and group sessions <i>via LCA contractor BikeRight</i></p> <p>Close-pass <i>police/road safety team education & enforcement</i></p> <p>Emerging issues over e-Cycles and e-Scooters</p>	<p>Delivery to approx. 2100 children annually by BikeRight</p> <p>New initiative for training adults</p>
Pedestrians (Children) Pedestrians (Adults)	<p>Interactive sessions- <i>as part of young people in education setting, partnership work with Living Streets (funded externally)</i></p> <p>Education– <i>difficult to deliver direct education on pedestrian issues to adults - key messages delivered to drivers via existing projects</i></p> <p>Schemes – <i>Schemes to encourage sustainable travel and provide additional features within Capital programmes</i></p>	<p>Adults –hard to reach/engage diverse group £0 budget</p>
Senior Road Users	<p>Interactive sessions & workshops <i>(virtual programme Feb 2021)</i></p> <p>Drive Safely for Longer <i>assessments for drivers aged 60+</i></p> <p>Merseyside Fire and Rescue <i>promoting schemes via home visits</i></p> <p>Engagement with primary care providers</p> <p>'We are undefeatable' & other opportunities to link with existing council & partner projects</p>	<p>Delivery to approx. 400 ORU annually by the road safety team & ADIs</p>

Ongoing & New Priorities

Vehicle Drivers	<p>Engage enhanced training for driving instructors & information for learners via schools & colleges</p> <p>Re-Engage pilot scheme (education/engagement with parents of learner drivers, <i>on hold due to funding</i>)</p> <p>Mind Your Business programme to educate business owners / managers & drivers in the workplace</p> <p>Taxi Drivers education programme with Taxi Licencing colleagues</p> <p>How's My Driving Pilot externally funded</p> <p>Mini-bus driver education & testing</p>	<p>Delivery to approx. 70 ADIs by the road safety team in partnership with Cheshire West</p> <p>Delivery to approx. 2700 adult drivers annually by the road safety team</p>
Motorcyclists	<p>Direct engagement with motorcyclists</p> <p>Bikesafe programme for motorcyclists</p> <p>Education information passed to drivers via existing programmes</p>	<p>Delivery to approx. 2700 adult drivers</p>
Engineering	<p>Significant investment in measures to improve transport and reduce road casualties:</p> <p><i>Local Safety & Local Journey Strategy - £410,000</i></p> <p><i>Traffic Signal Improvements - £350,000</i></p> <p><i>Accessibility Improvements - £150,000</i></p> <p>Liveable Streets and School Streets?</p>	
Enforcement	<p>Collaboration with partner agencies (NSL and Police) to enforce driver and rider compliance</p> <p>Deregulation of additional powers for enforcement of school streets</p>	

Emerging Issues

- Climate emergency
- Quieter (electric) vehicles
- Increase of vulnerable road users (walking and cycling)
- Increasing drink & drug use
- Liveable neighbourhoods (integration)
- Budgetary issues for road safety ETP
- School crossing patrol service consultations
- E-Cycles and E-Scooters
- Ongoing (local) enforcement incl. new tech and community Roadwatch initiatives
- Covid 19 and implications on delivery and face to face engagement