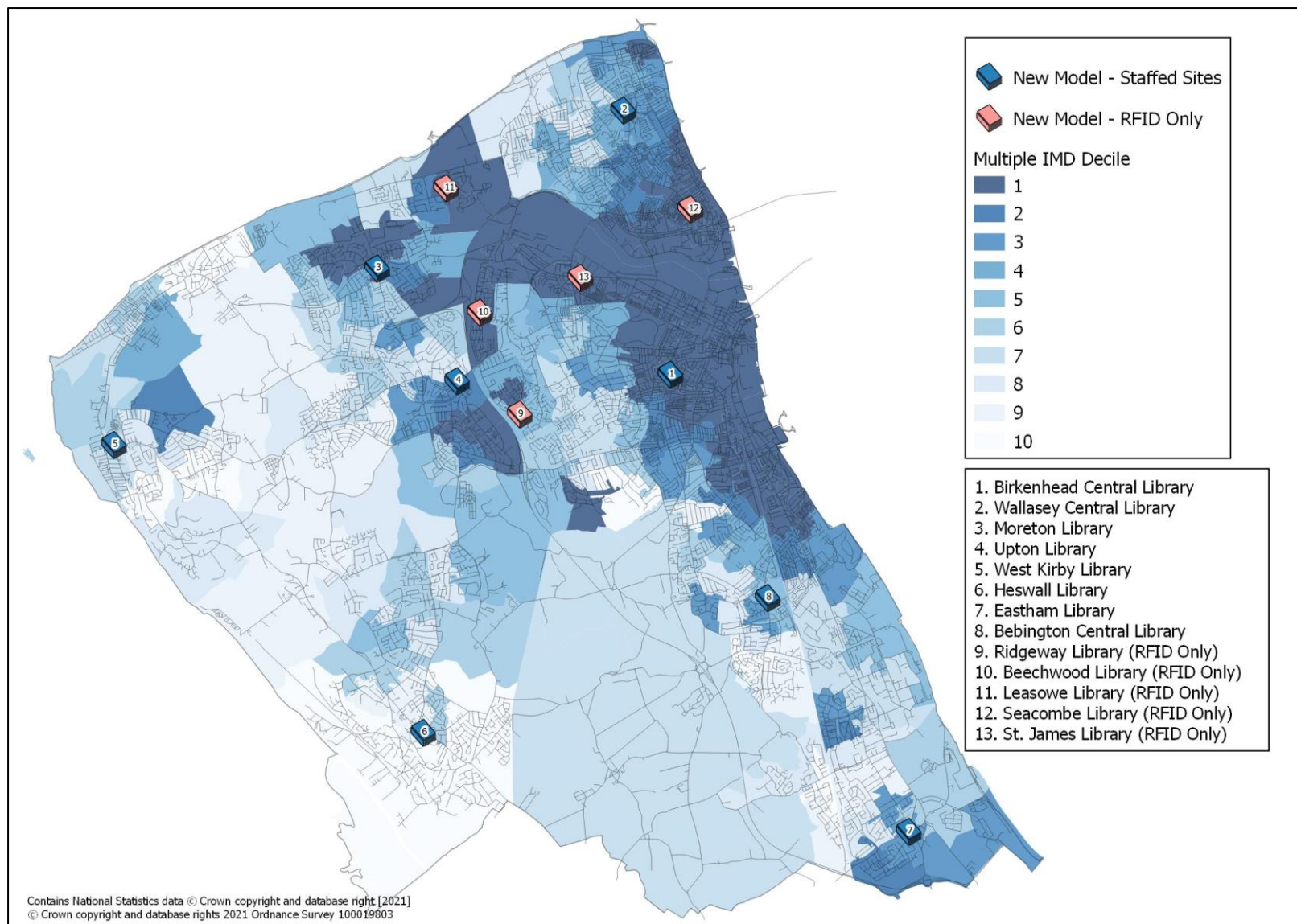
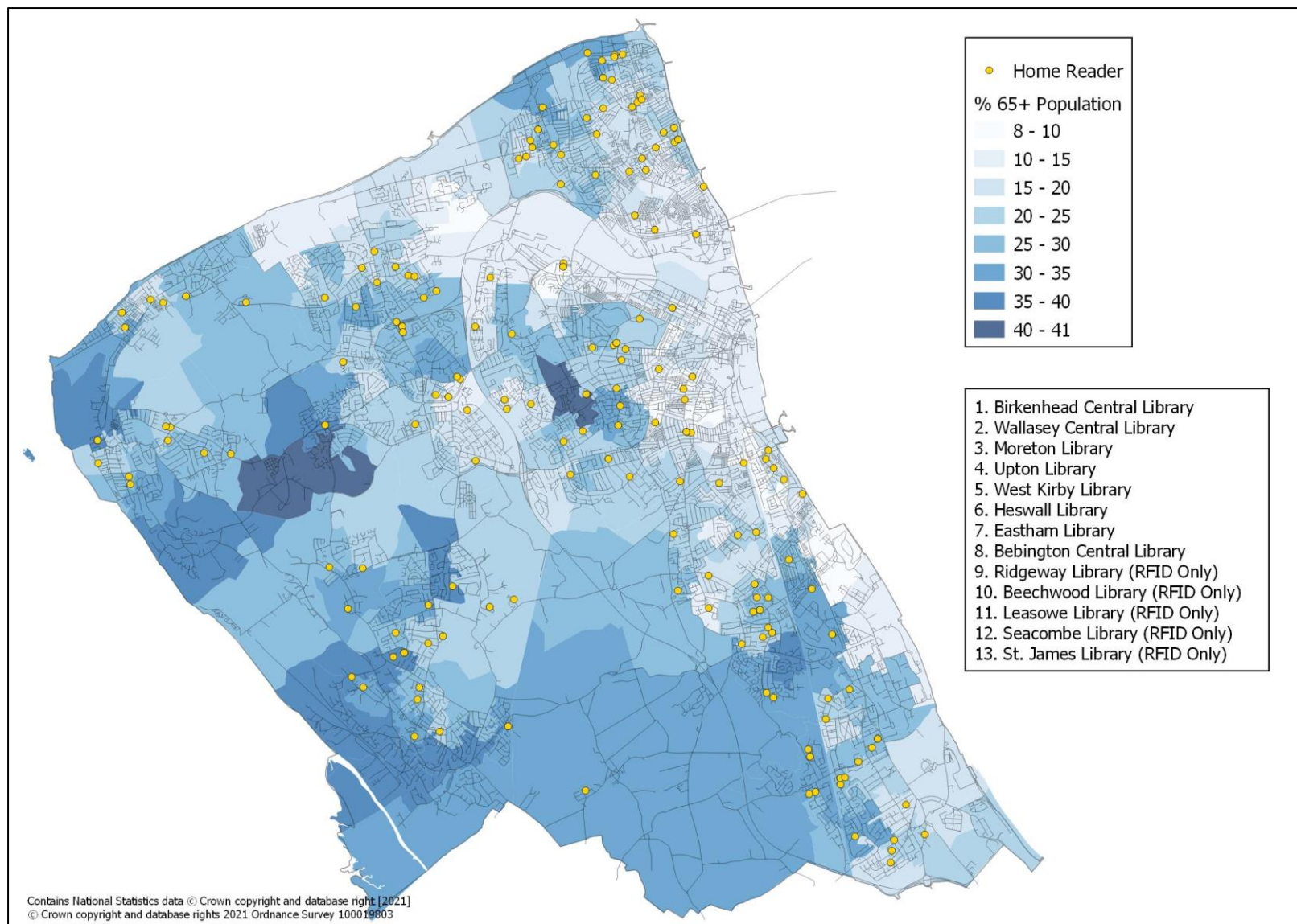


**Figure 1: Preferred Option 3 – New Model Sites and Proposed Mobile Library Outreach Sites**

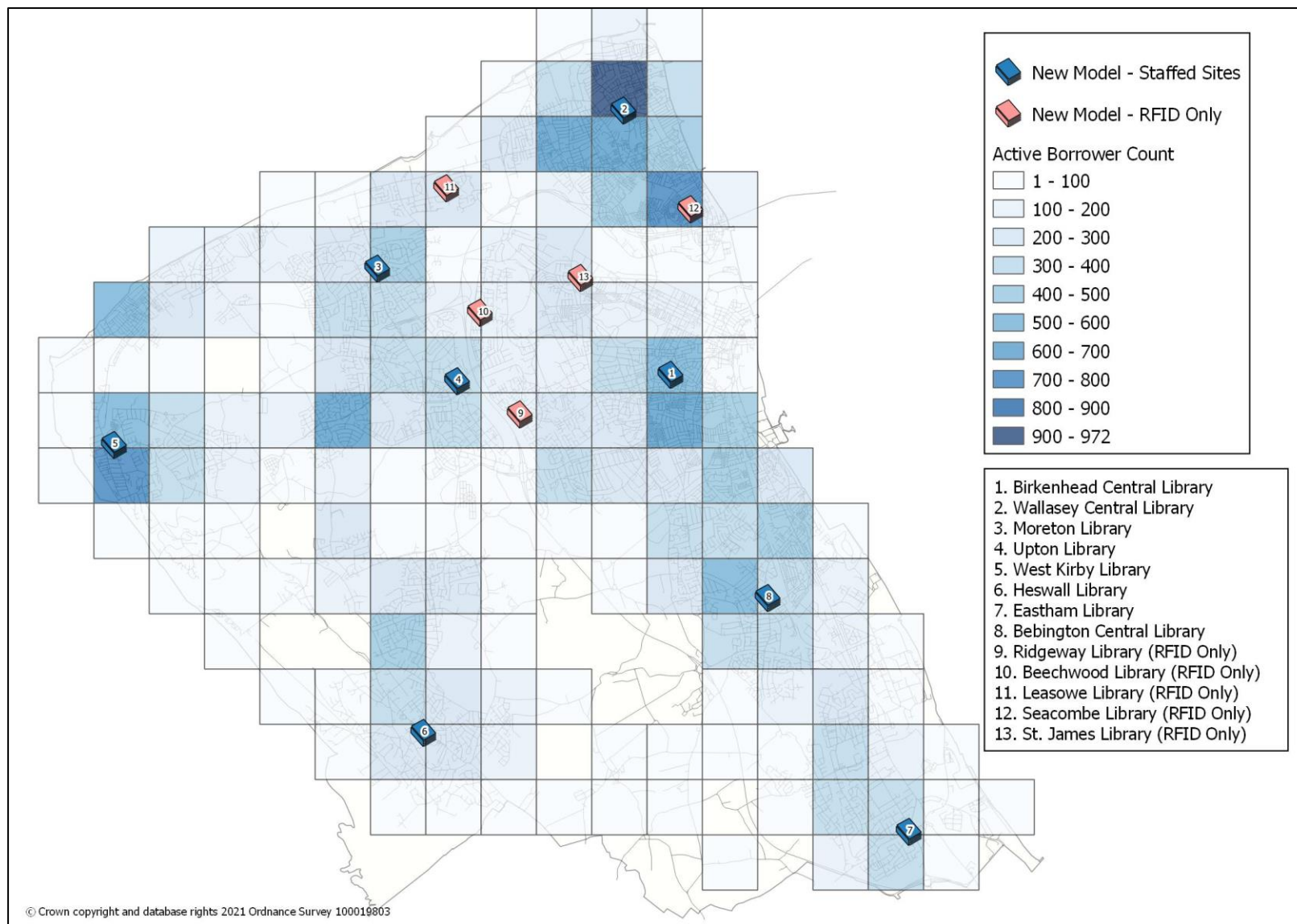


**Figure 2: Preferred Option 3 – New Model Sites vs. Multiple Indices of Multiple Deprivation Decile (LSOAs)**

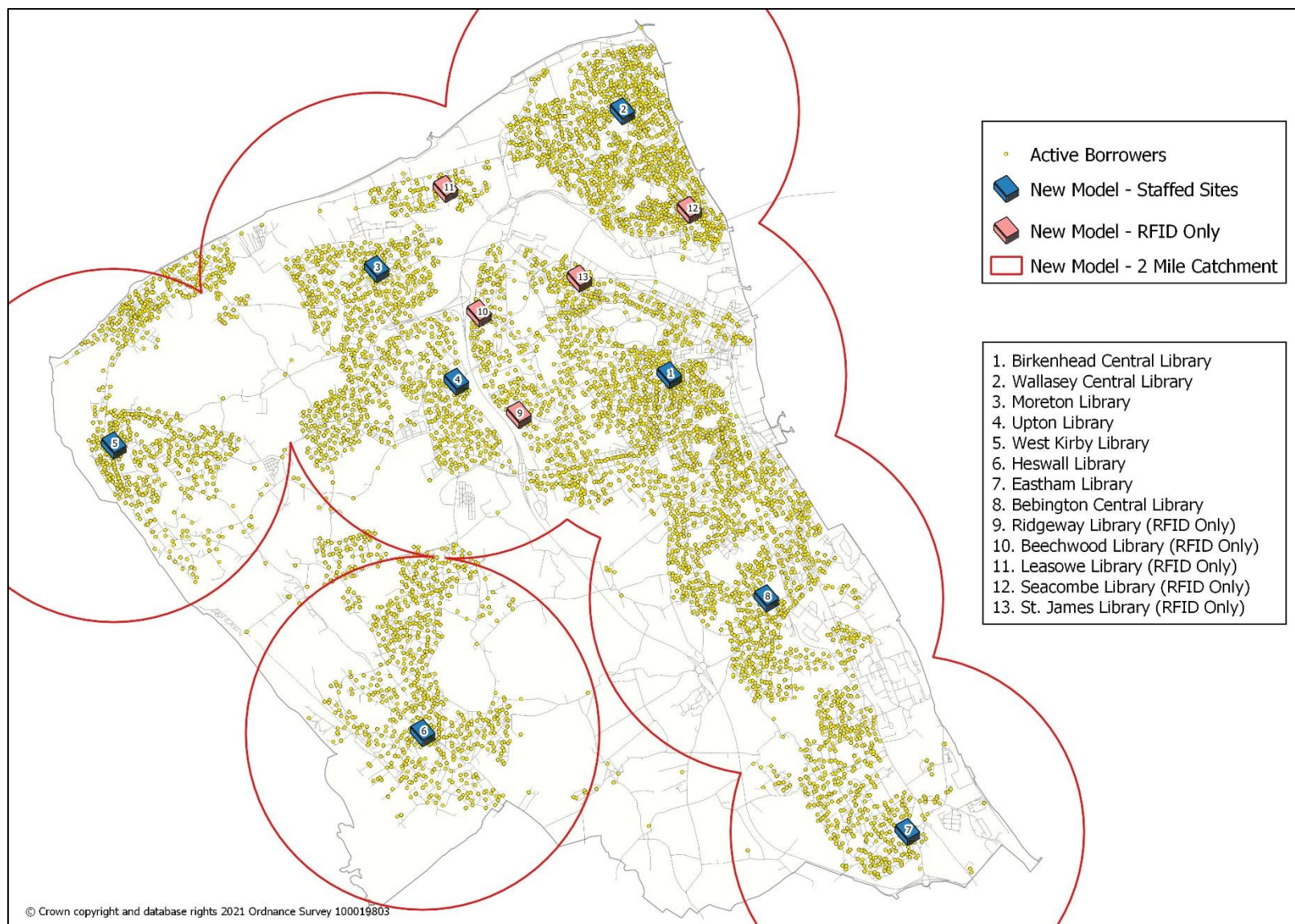


**Figure 3: Home Reader Distribution vs. % 65+ Population Estimates (LSOAs based on ONS Mid-Year Estimates 2020)**



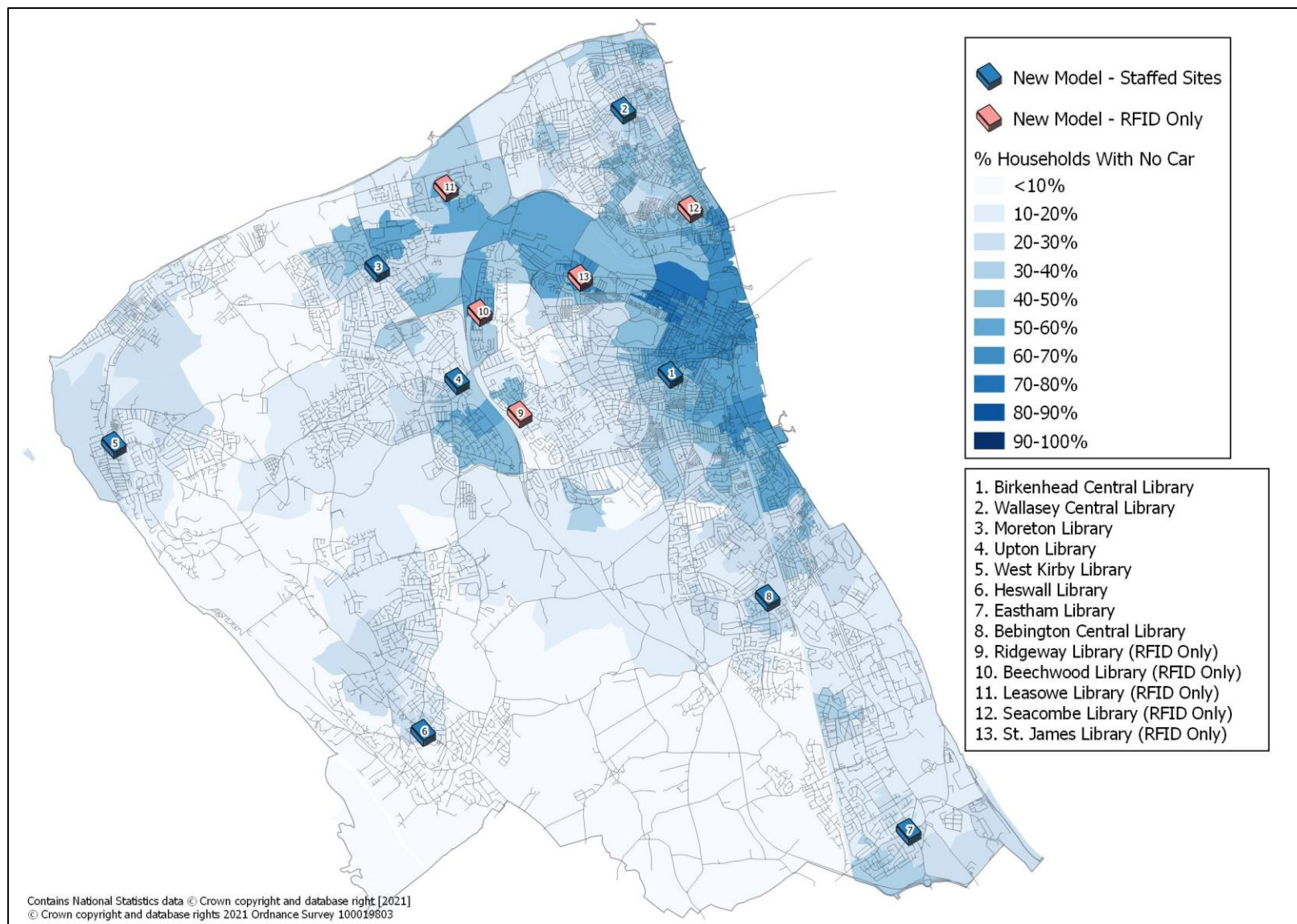


**Figure 4: Active Borrowers Count (1km Grid) and Distribution**

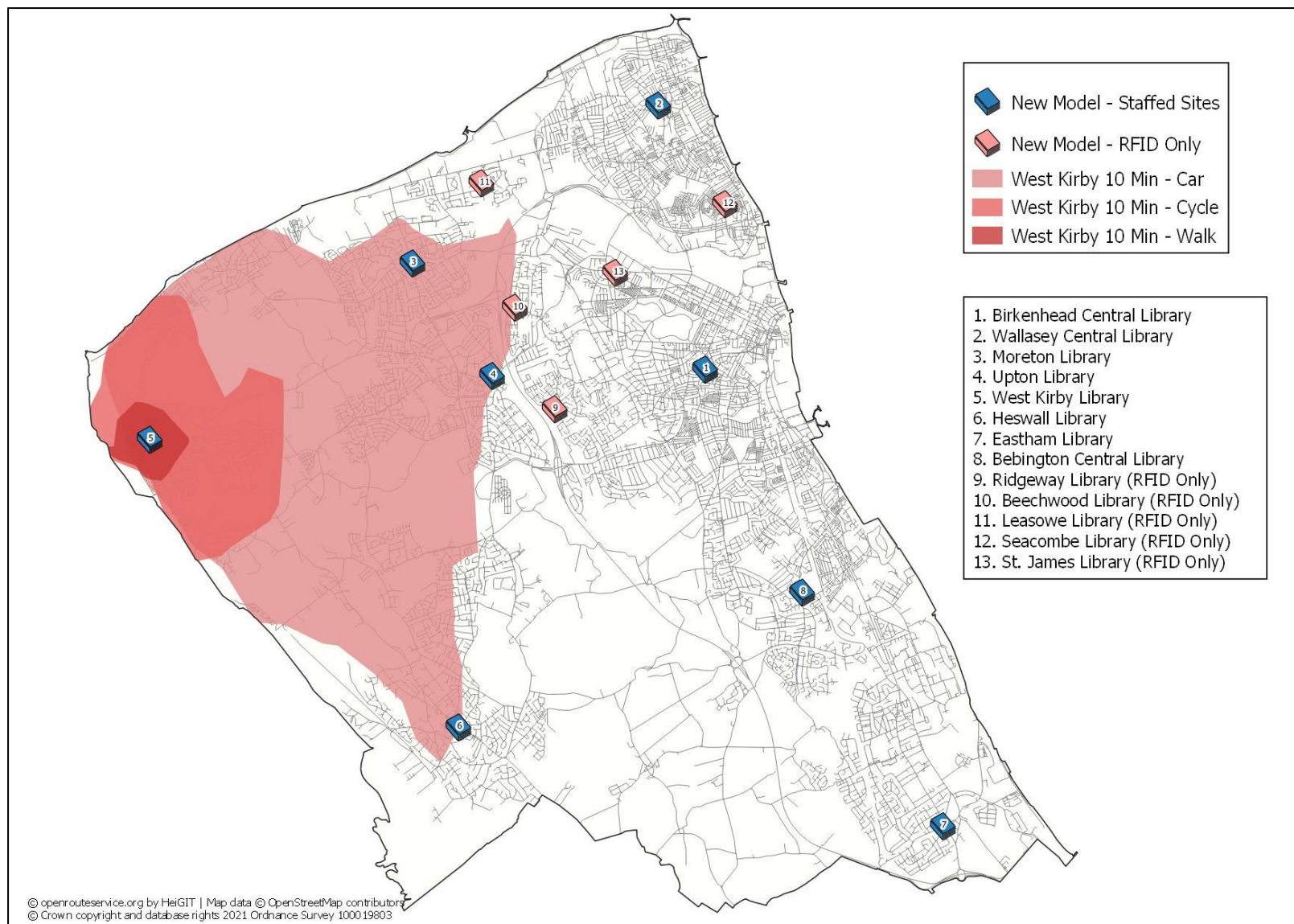


**Figure 5: Active Borrowers Distribution vs 2 Mile Catchment Buffer for New Model Staffed Sites**

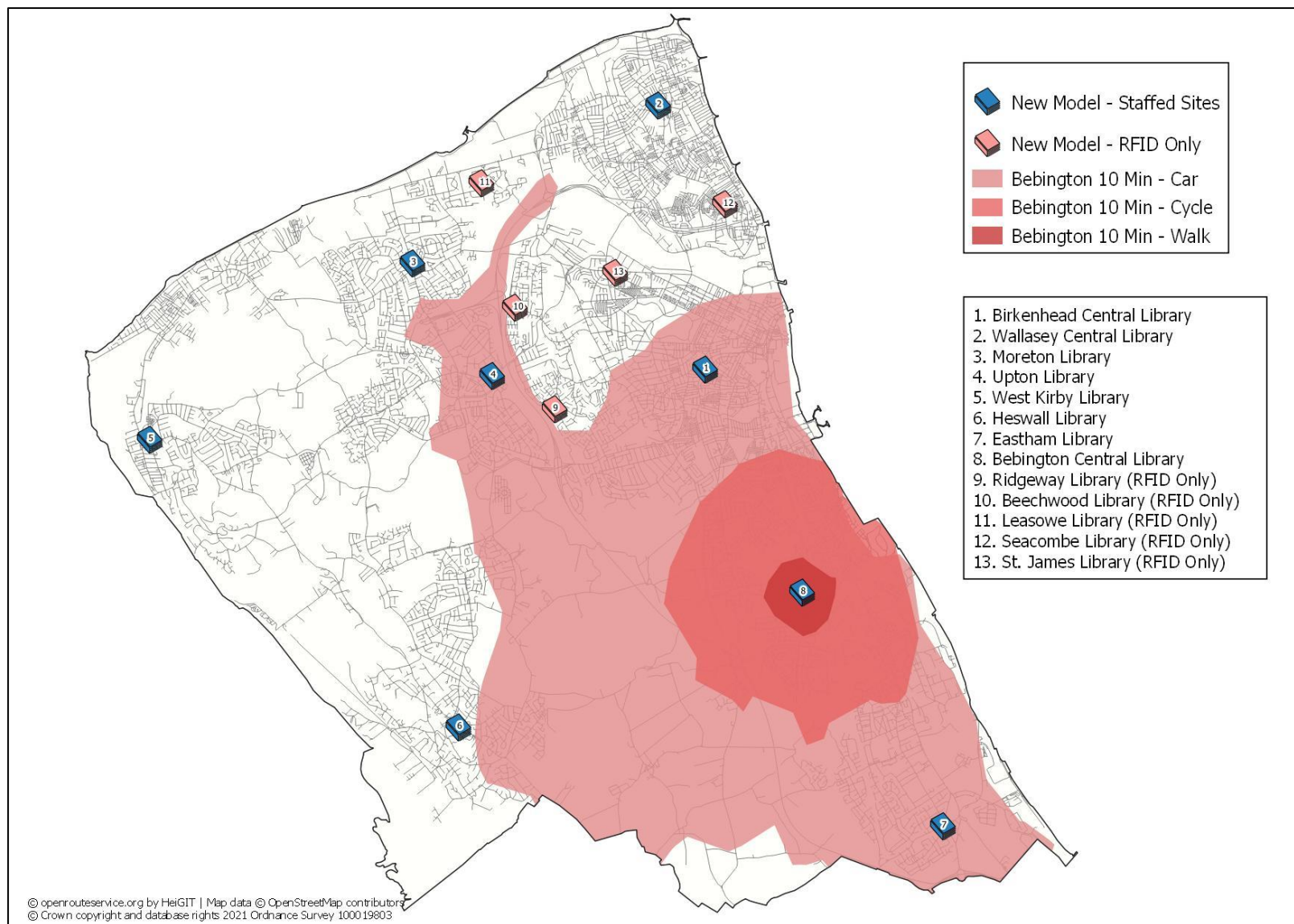




**Figure 6: Preferred Option 3 – New Model Sites vs. % Households With No Car (Census 2011)**

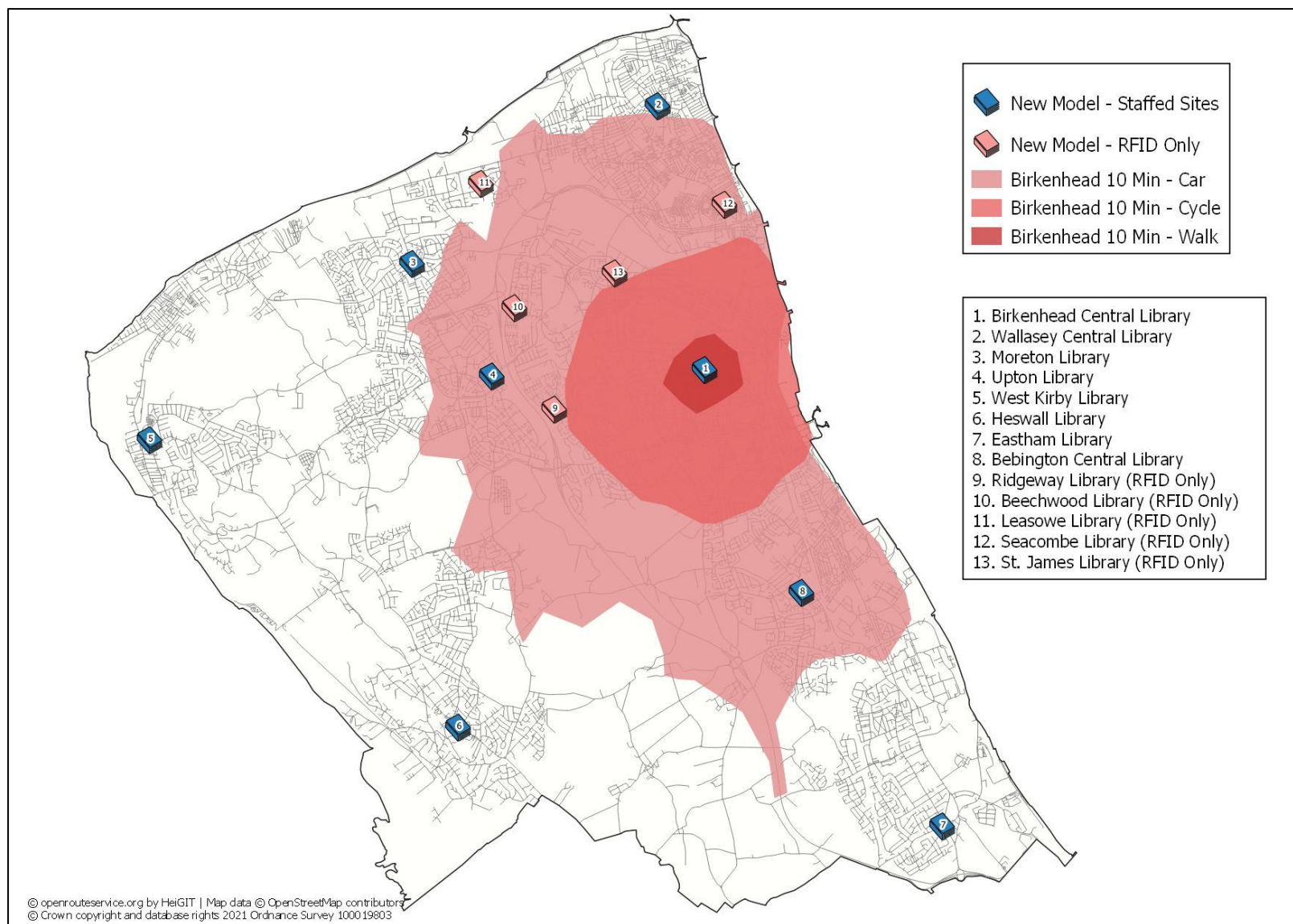


**Figure 7: Preferred Option 3 – New Model – West Kirby 10 Minute Drive, Cycle and Walk Catchment Isochrones**

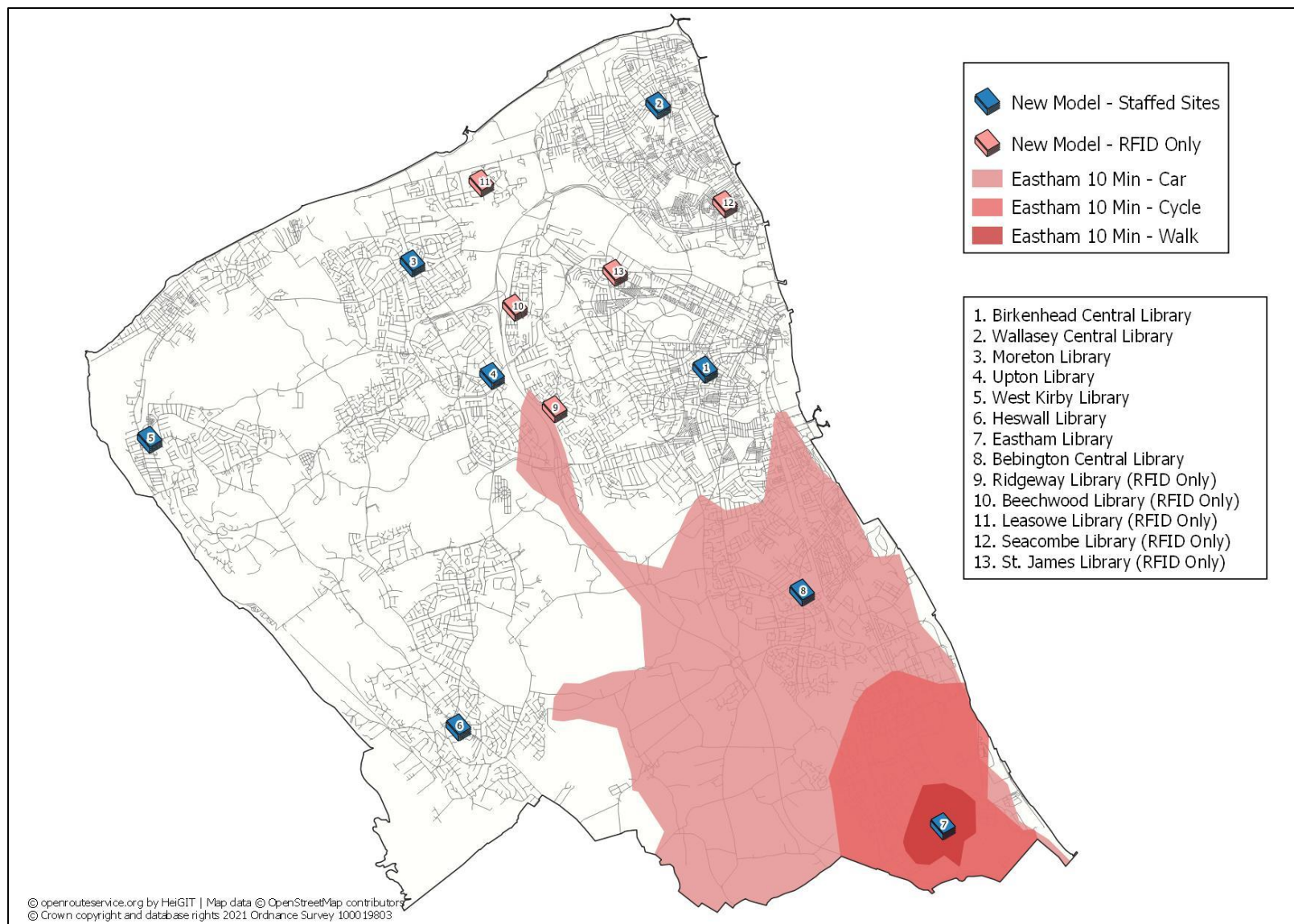


**Figure 8: Preferred Option 3 – New Model – Bebington 10 Minute Drive, Cycle and Walk Catchment Isochrones**

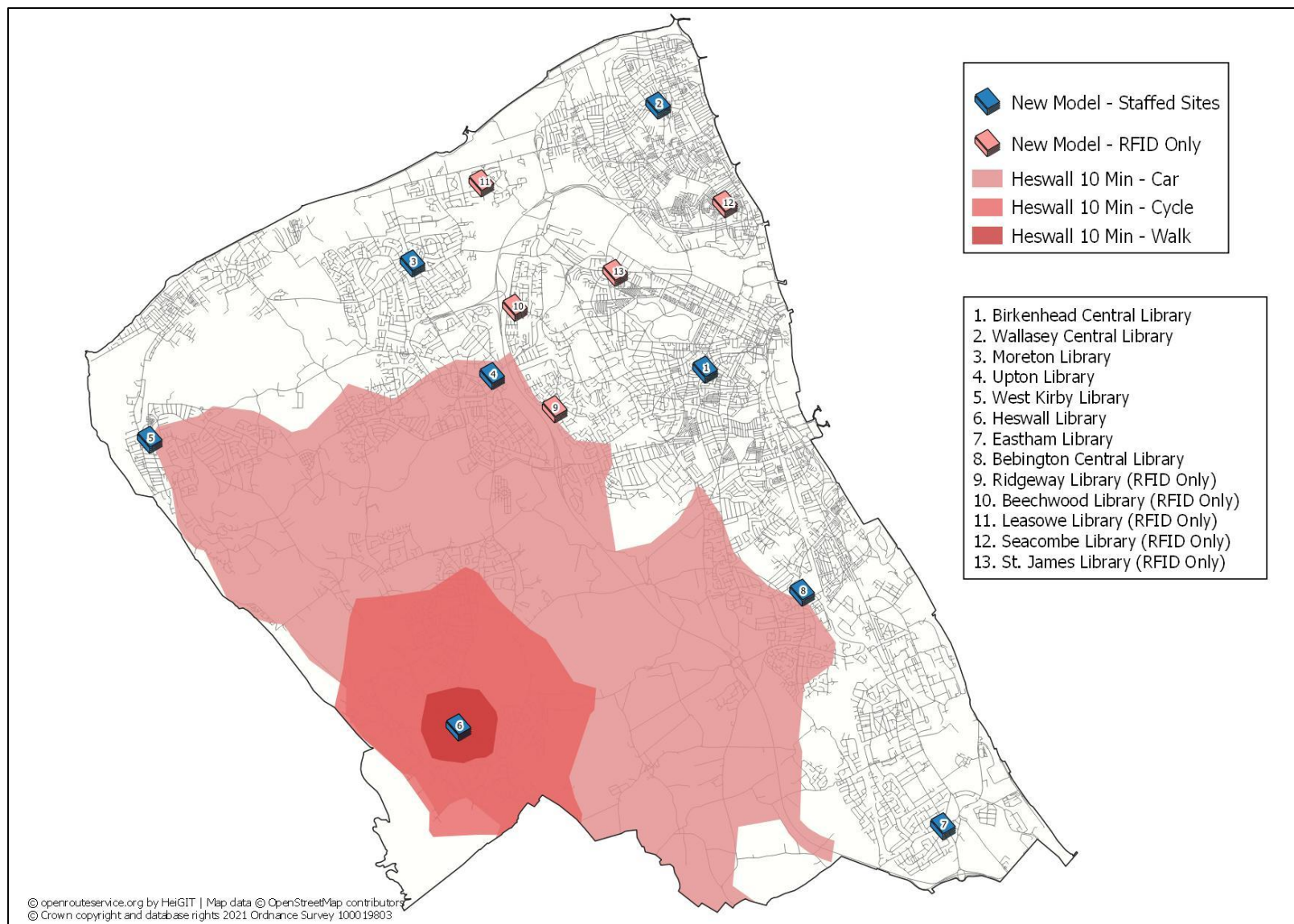




**Figure 9: Preferred Option 3 – New Model – Birkenhead 10 Minute Drive, Cycle and Walk Catchment Isochrones**

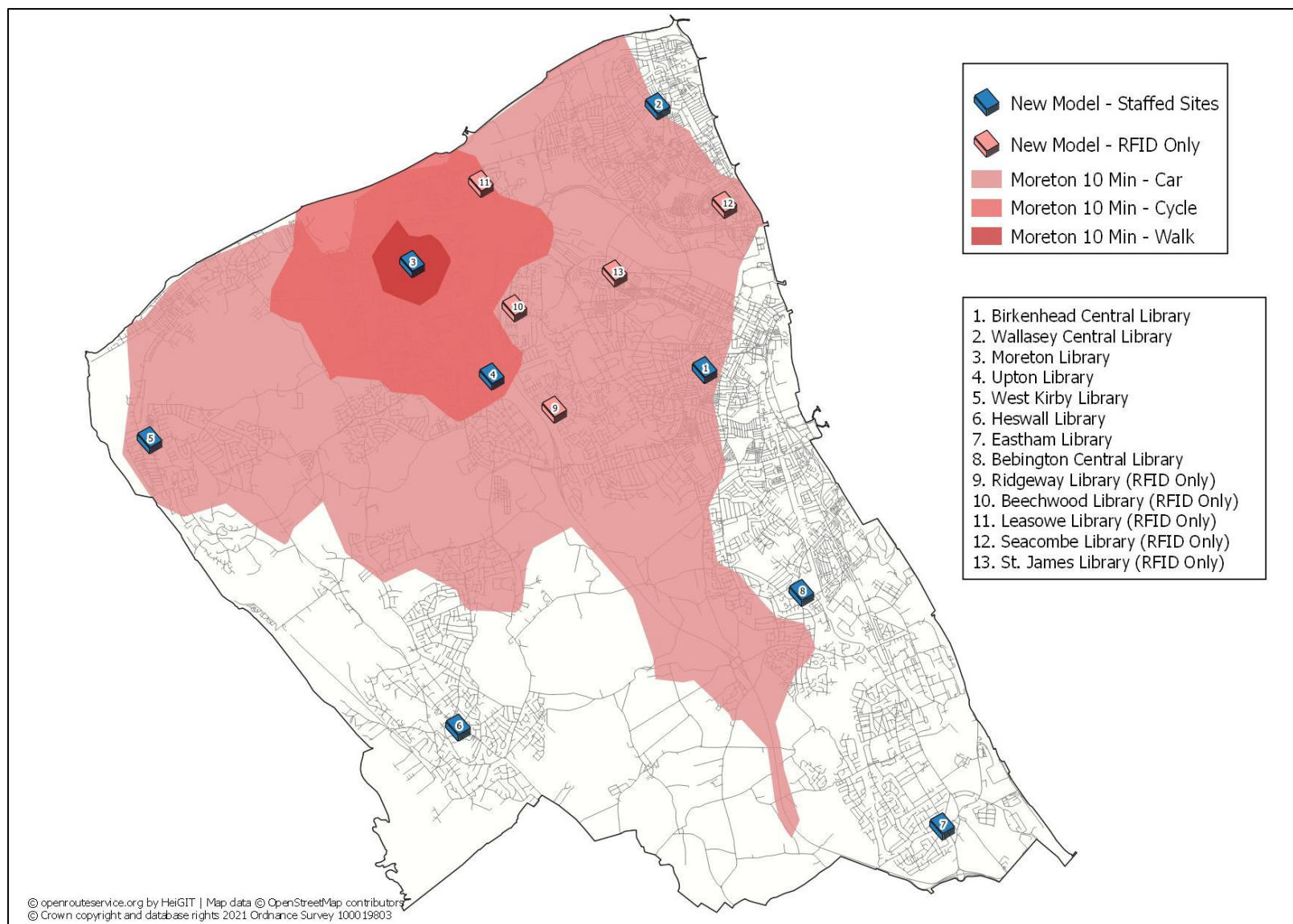


**Figure 10: Preferred Option 3 – New Model – Eastham 10 Minute Drive, Cycle and Walk Catchment Isochrones**

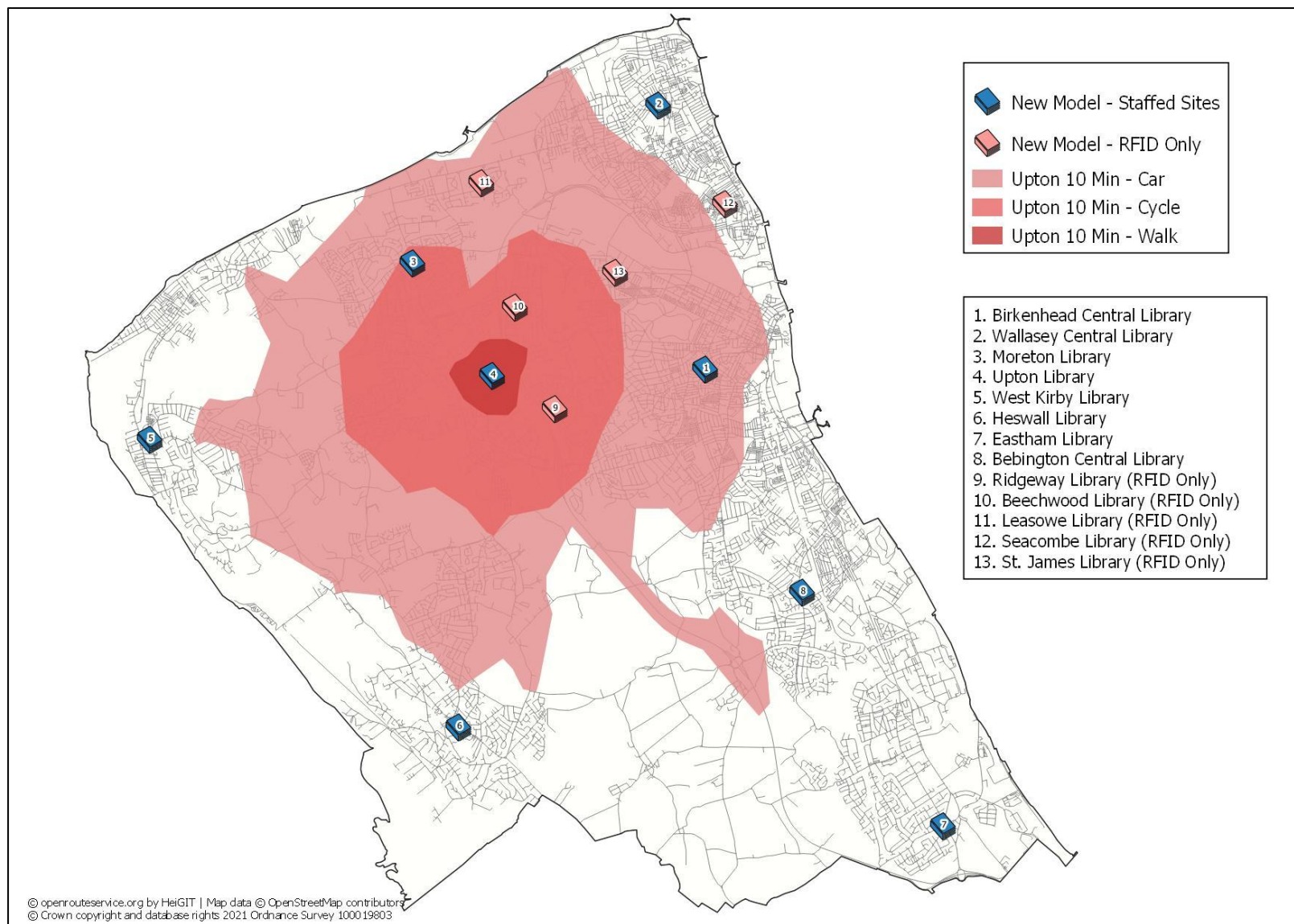


**Figure 11: Preferred Option 3 – New Model – Heswall 10 Minute Drive, Cycle and Walk Catchment Isochrones**

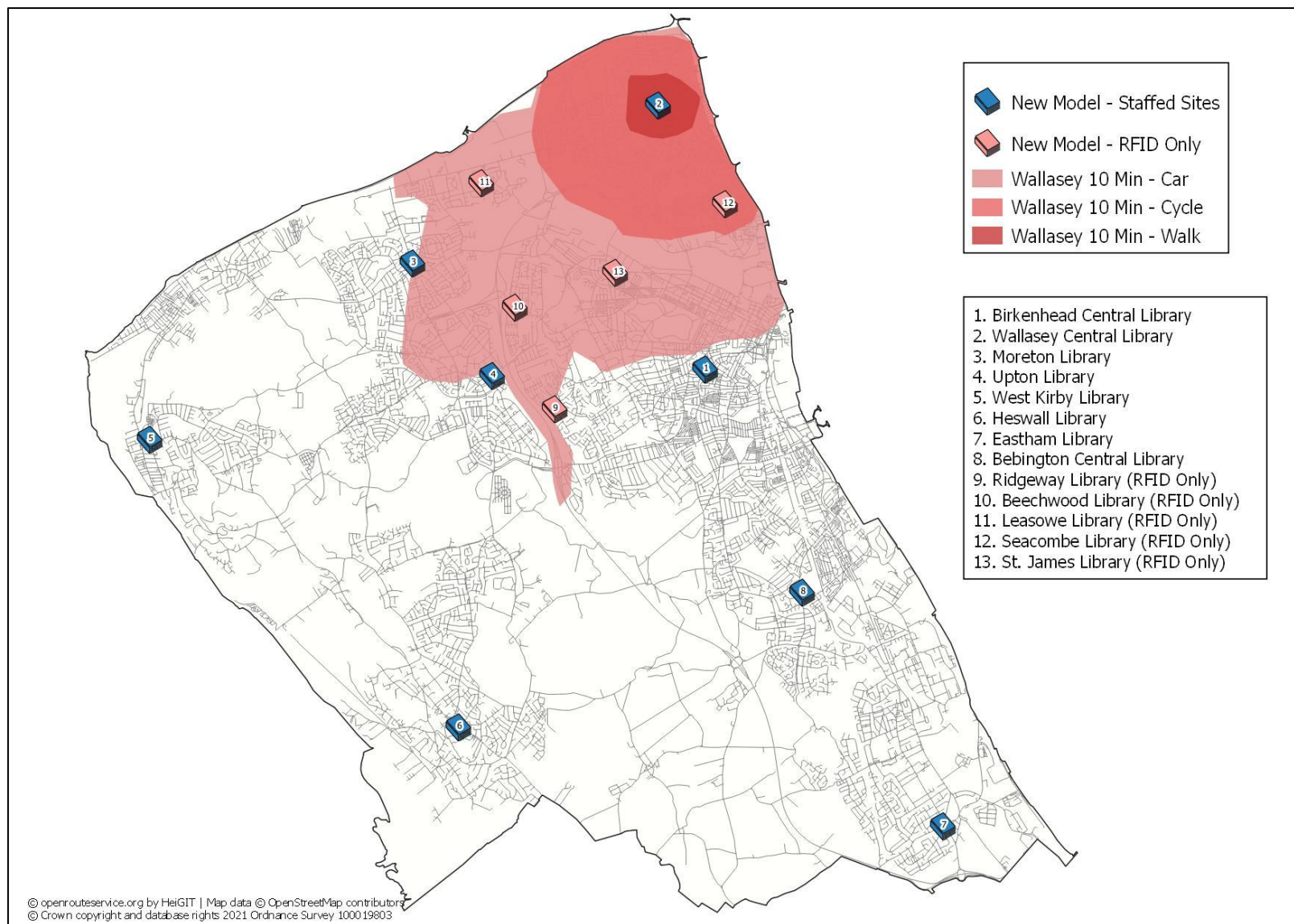




**Figure 12: Preferred Option 3 – New Model – Moreton 10 Minute Drive, Cycle and Walk Catchment Isochrones**

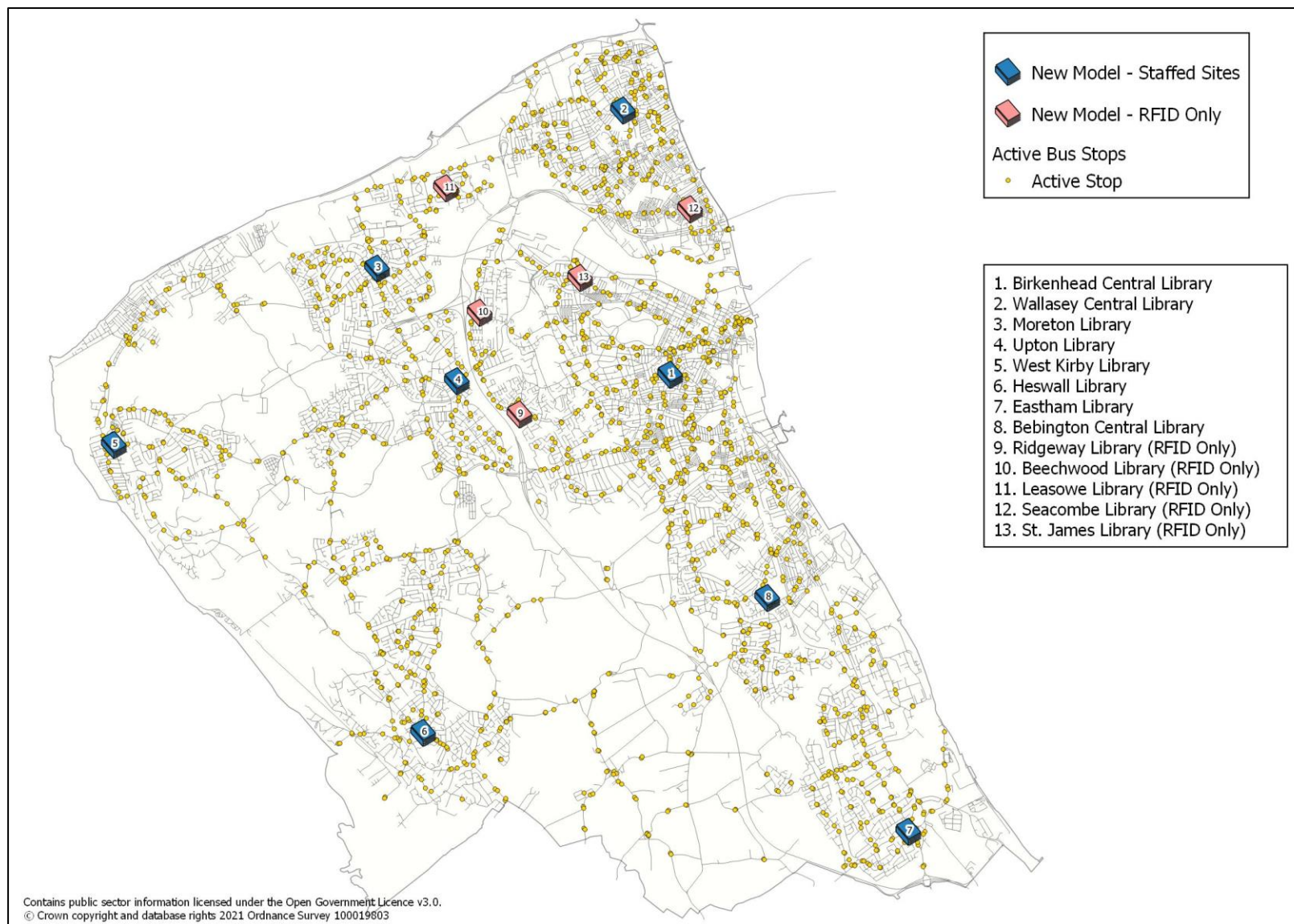


**Figure 13: Preferred Option 3 – New Model – Upton 10 Minute Drive, Cycle and Walk Catchment Isochrones**

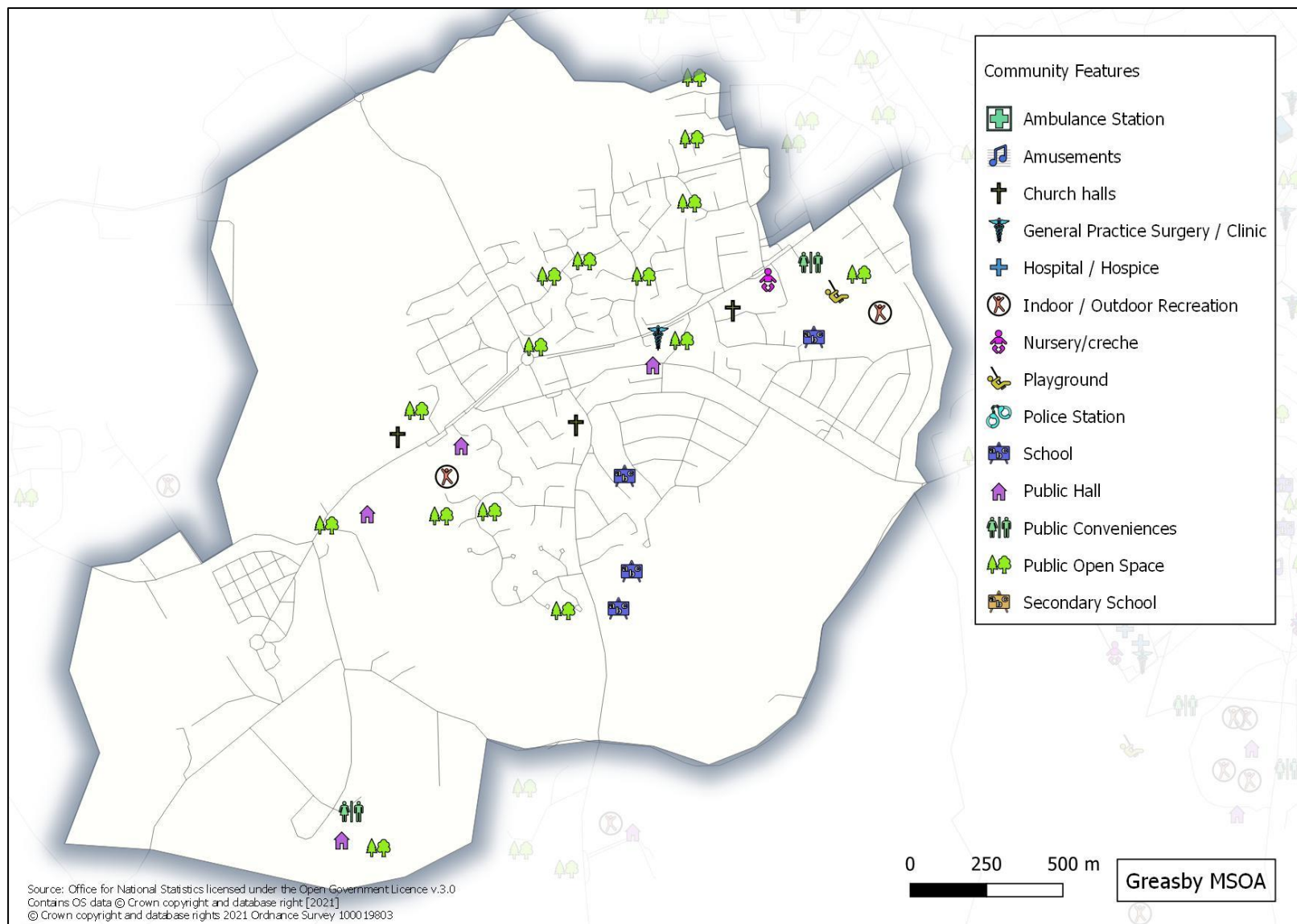


**Figure 14: Preferred Option 3 – New Model – Wallasey 10 Minute Drive, Cycle and Walk Catchment Isochrones**





**Figure 15: Preferred Option 3 – New Model vs. Network of Active Bus Stops**



**Figure 16: Community Feature Assessment – MSOA Example**