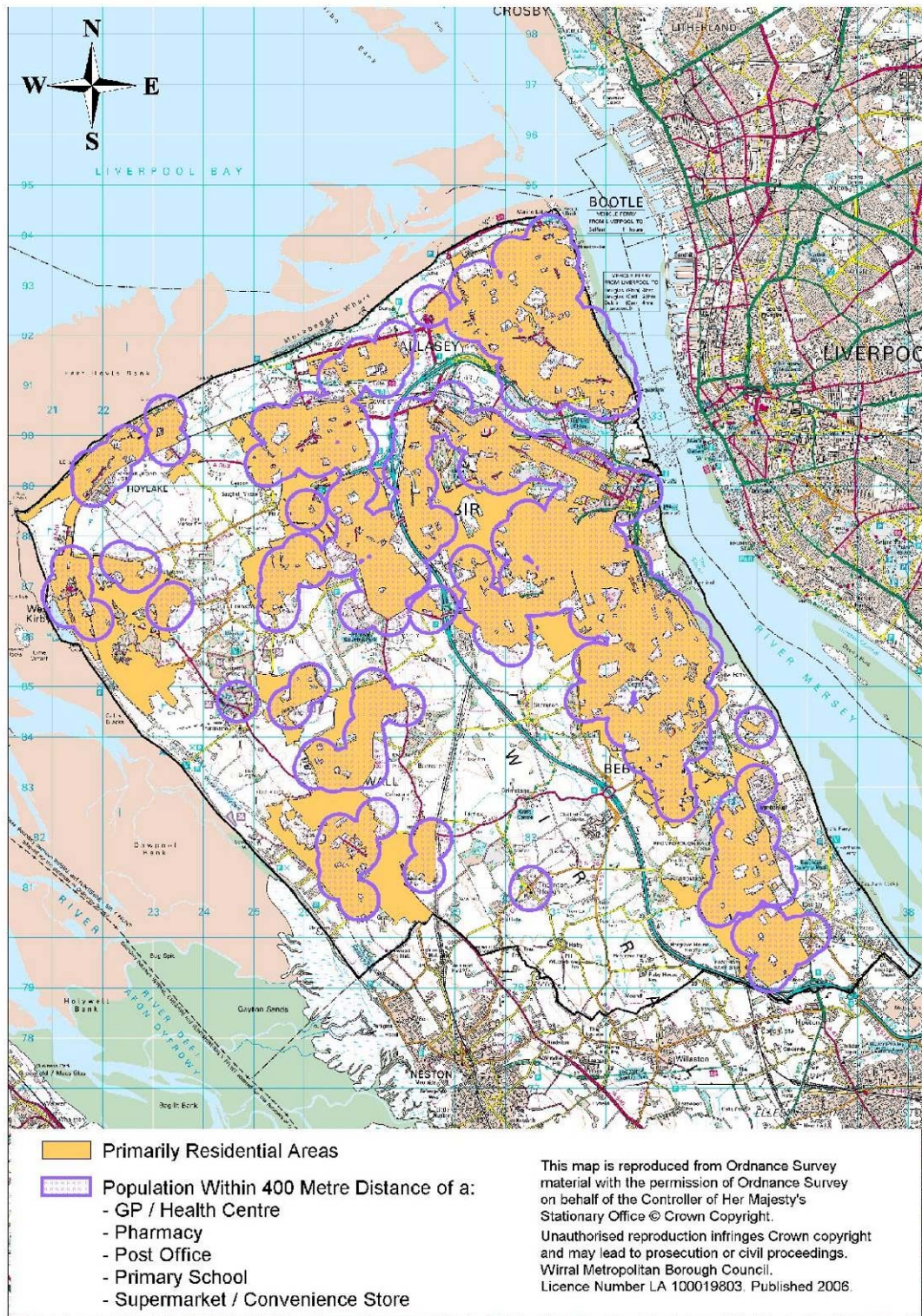


APPENDIX 2 – BASELINE REVIEW: SOCIAL INCLUSION (continued)

SA Objective 3: To Promote the Accessibility of Services and Facilities to All Sectors of Society

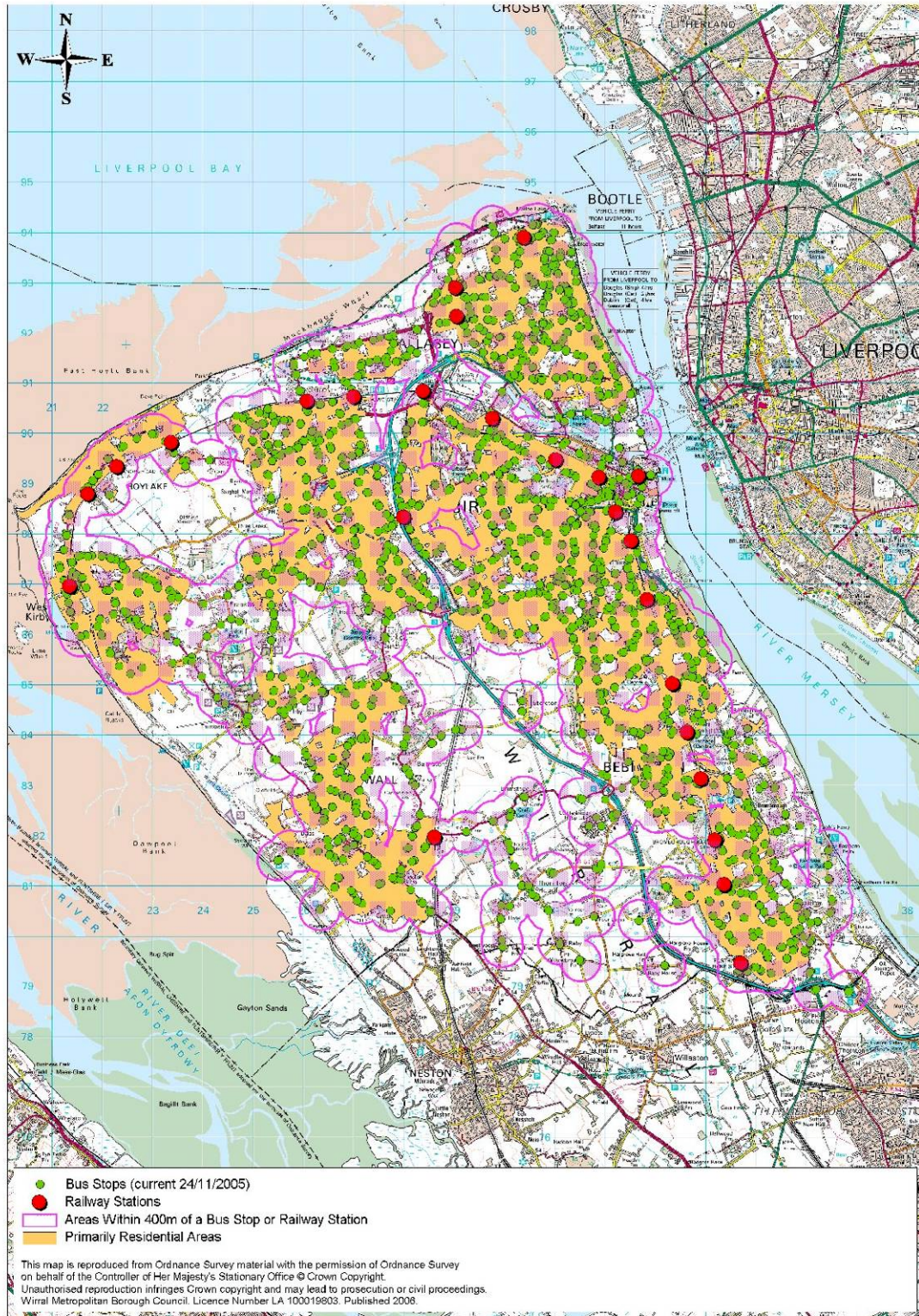
Indicator: Population within 400m distance of a GP/health centre, pharmacy, post office, primary school, supermarket/convenience store.



84.6% of the borough's population are within 400 metres distance of the listed 'key' local services. (Source: Wirral Land and Property Gazetteer)

Indicator: Percentage of residential households within 400m of a bus stop or railway station.

98.7% of Wirral's residential households are within 400 metres of a bus stop or railway station. (Source: Wirral Land and Property Gazetteer August 2006)



Indicator: Proportion of jobs and services within 400m of a bus stop or railway station

Industrial, Commercial, Retail (both within town centres and out of town developments) and traditional suburban centre areas were mapped to show the main service and job areas. These main job and service region boundaries comprise an area of 853 hectares of which 793 hectares are within 400m of a bus or railway station representing 93%.

