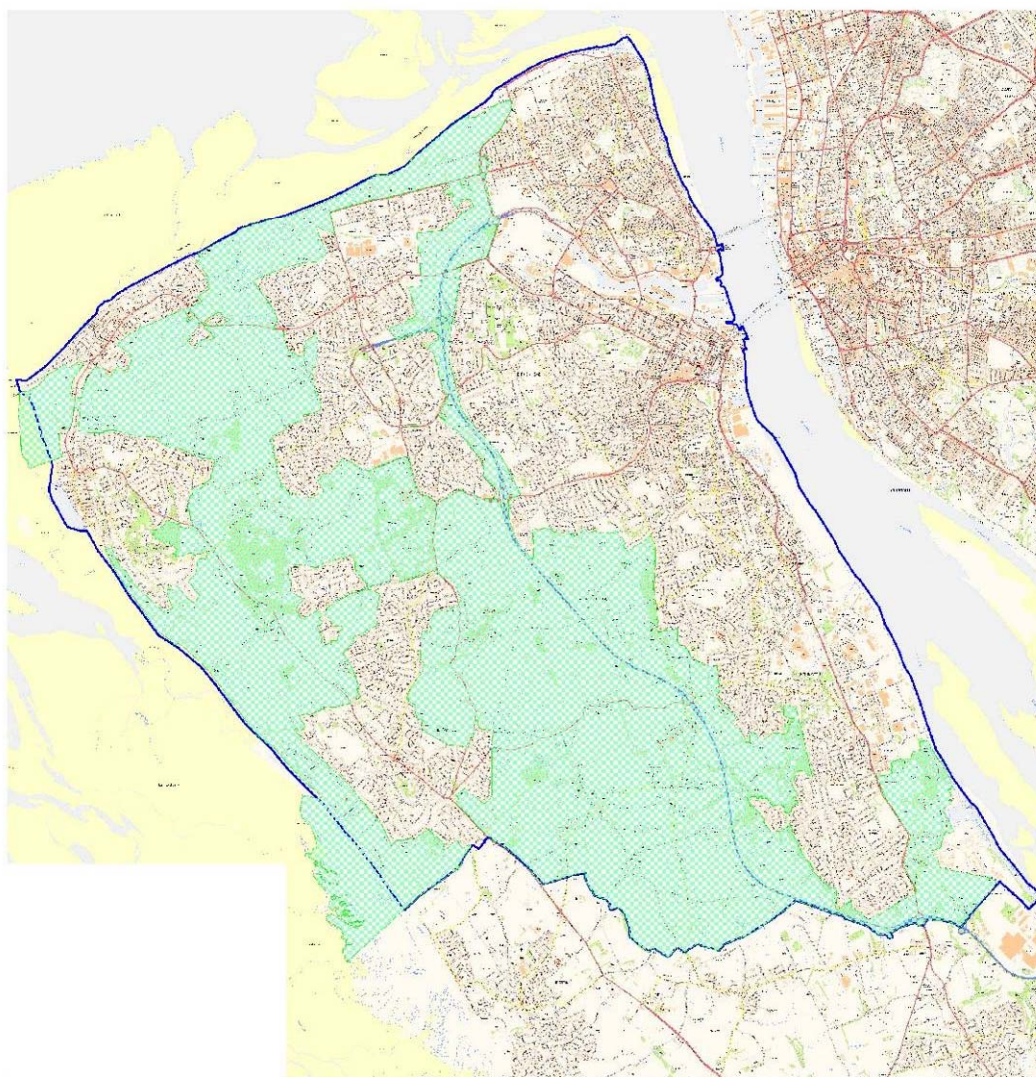


APPENDIX 2 – BASELINE REVIEW - QUALITY OF LIFE

SA Objective 21: To conserve and enhance the character and quality of the Borough's landscapes and townscapes, maintaining and strengthening local distinctiveness and sense of place

Indicator: area of green belt as a percentage of the total Borough Area

The total area of Green Belt within the Wirral is 7,330 hectares, which represents 47.1% of the total land area of the borough.



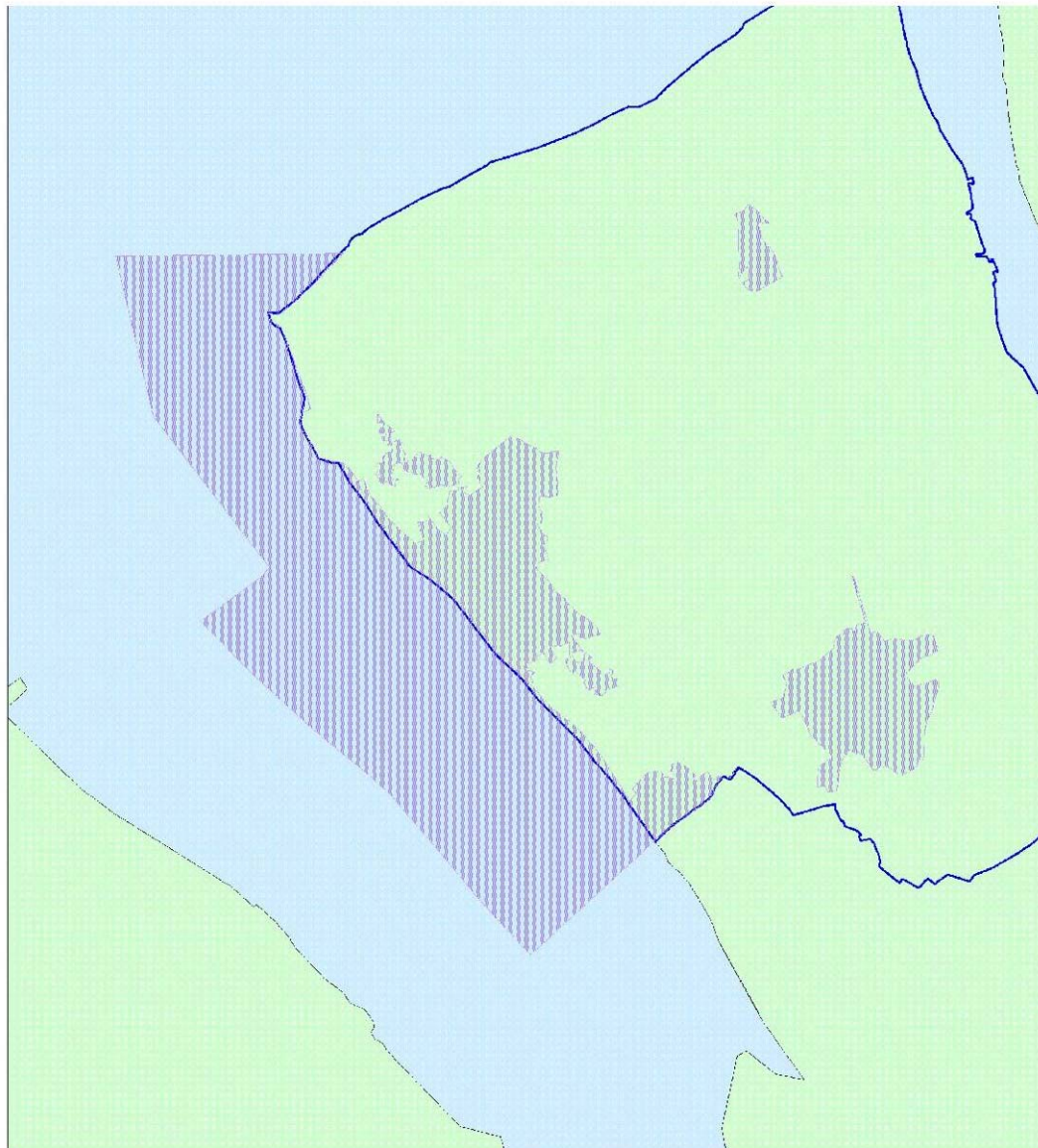
This map is reproduced from Ordnance Survey material with the permission of Ordnance Survey on behalf of the Controller of Her Majesty's Stationary Office. Crown Copyright. Unauthorised reproduction infringes Crown copyright and may lead to prosecution or civil proceedings. Wirral Metropolitan Borough Council. Licence Number LA 076430 (2005).


Indicator: Area of semi-natural habitat lost to development

Data to be collected

Indicator: Extent of areas designated as being of special landscape value

The Wirral has a total area of 5,463 hectares with special/high quality landscape value.



 Area of Special Landscape Value

This map is reproduced from Ordnance Survey material with the permission of Ordnance Survey on behalf of the Controller of Her Majesty's Stationary Office. Crown Copyright. Unauthorised reproduction infringes Crown copyright and may lead to prosecution or civil proceedings. Wirral Metropolitan Borough Council. Licence Number LA 076430 (2005).

Indicator: *percentage of eligible open space managed to Green Flag Standard*

Data to be collected

SA Objective 22: To Achieve High Quality and sustainable design for buildings, spaces and the public realm sensitive to the locality

Indicator: *Residents satisfaction surveys*

Data to be collected

Indicator: *Number of groups/individuals involved in decision-making*

Data to be collected

SA Objective 23: To maximise opportunities for culture, sport and leisure

Indicator: Type, number and location of facilities for sport, recreation and leisure

A list of major sport, recreation and leisure facilities was defined:

- All sports halls/centres.
- All Astroturf pitches.
- All Swimming Pools.
- All health and fitness studios.
- All public libraries.

To monitor if the policy or proposal will retain adequate provision for culture, sport and leisure.

* The list included facilities which were open and running as of the 31st March 2005.

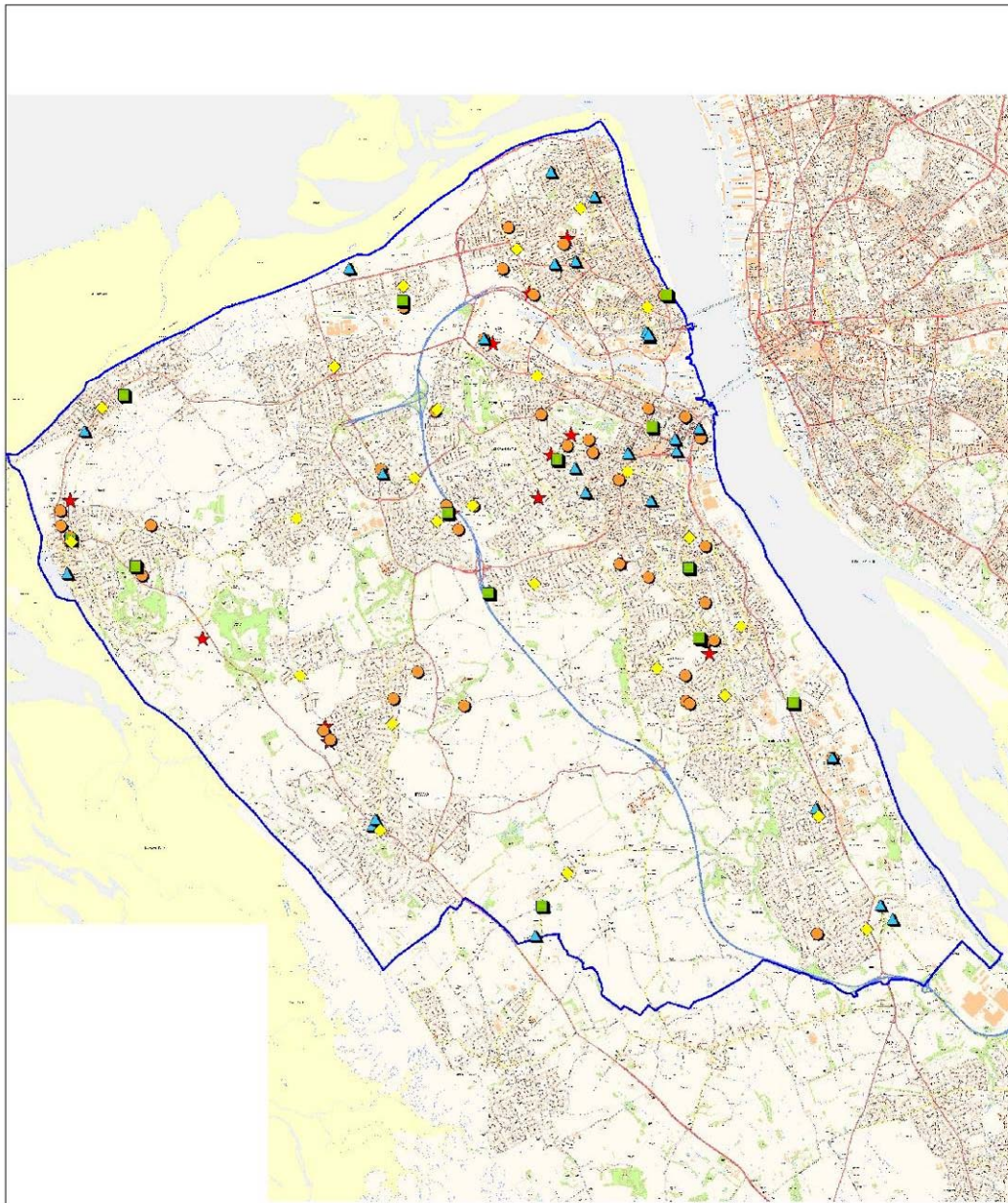
Wirral has **43** Sports Halls available for public use, these include; Sports Centres, Recreation Centres and School Sports Halls open to public use.

There are a total of **13** Astroturf pitches located on the Wirral.

13 Swimming pools accessible to the public are situated throughout the borough.

There are **32** health and fitness studios located within Wirral, these include all public gyms.

Wirral has a total of **25** public libraries.



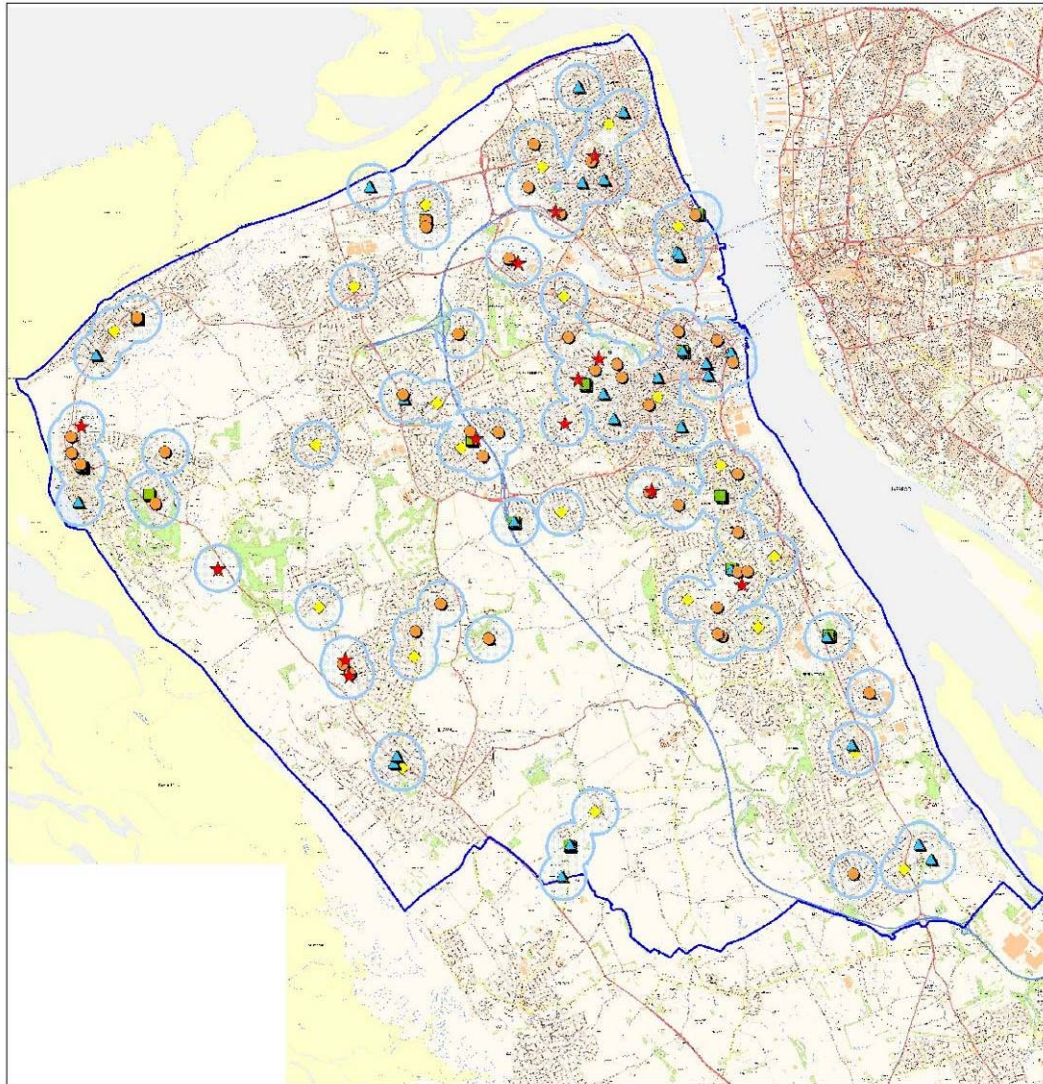
- ◆ Libraries
- Swimming Pools
- ▲ Health and Fitness Facilities
- Sports Halls/Centres
- ★ Astroturf Pitches

This map is reproduced from Ordnance Survey material with the permission of Ordnance Survey on behalf of the Controller of Her Majesty's Stationary Office. Crown Copyright. Unauthorised reproduction infringes Crown copyright and may lead to prosecution or civil proceedings. Wirral Metropolitan Borough Council. Licence Number LA 076430 (2005).

Indicator: Number of households within 400m walking distance of sport, recreation and leisure facilities (swimming pools, Libraries, health and fitness facilities, sports halls/centres, astroturf pitches)

A buffer of 400 meters was produced around each of the *sport, recreation and leisure facilities* to assess the proportion of Wirral households that have easy access (within walking distance) to these facilities, and to identify if policies or proposals promote additional provision to meet identified needs.

Within this buffer 63,535 residential properties were included from a total of 142,775. Therefore 44.5% of the borough's population has good accessibility to these sport, recreation and leisure facilities.



-  Swimming Pools
-  Libraries
-  Health and Fitness Facilities
-  Sports Halls/Centres
-  Astro turf Pitches
-  Areas Within 400m Walking Distance of Sport, Recreation and Leisure Facilities

This map is reproduced from Ordnance Survey material with the permission of Ordnance Survey on behalf of the Controller of Her Majesty's Stationary Office. Crown Copyright. Unauthorised reproduction infringes Crown copyright and may lead to prosecution or civil proceedings. Wirral Metropolitan Borough Council. Licence Number LA 076430 (2005).

Indicator: Residents satisfaction surveys

Data to be collected

SA Objective 24: To promote sustainable travel choices and reduce the need to travel

Indicator: number and percentage of new housing, commercial, retail/office/leisure developments located within 400m of a bus or railway station

All completed retail, office, leisure, industrial, commercial and housing developments from April 1st 2004 to March 31st 2005 were mapped to identify areas that have effective or ineffective accessibility to public transport.

Type of New Development	Number of New Developments	Number of New Developments Located within 400m of a Bus Stop or Railway Station	% of New Developments Located within 400m of a Bus Stop or Railway Station
New Housing Development	505	484	95.8%
New Industrial / Commercial Development Sites	9	9	100%
New Retail / Office / Leisure Development Sites	4	4	100%
Totals	518	497	95.9%

95.9% of all completed new developments have good accessibility to public transport routes. All non-residential development completed in 2004/05 was located within 400m of a bus stop or railway station. For residential development 95.8% of new dwellings were located within 400m of a bus stop or railway station, however one development site with 20 houses was 550m to 590m from the closest bus stop and one new dwelling was 500 m from the closest railway station.

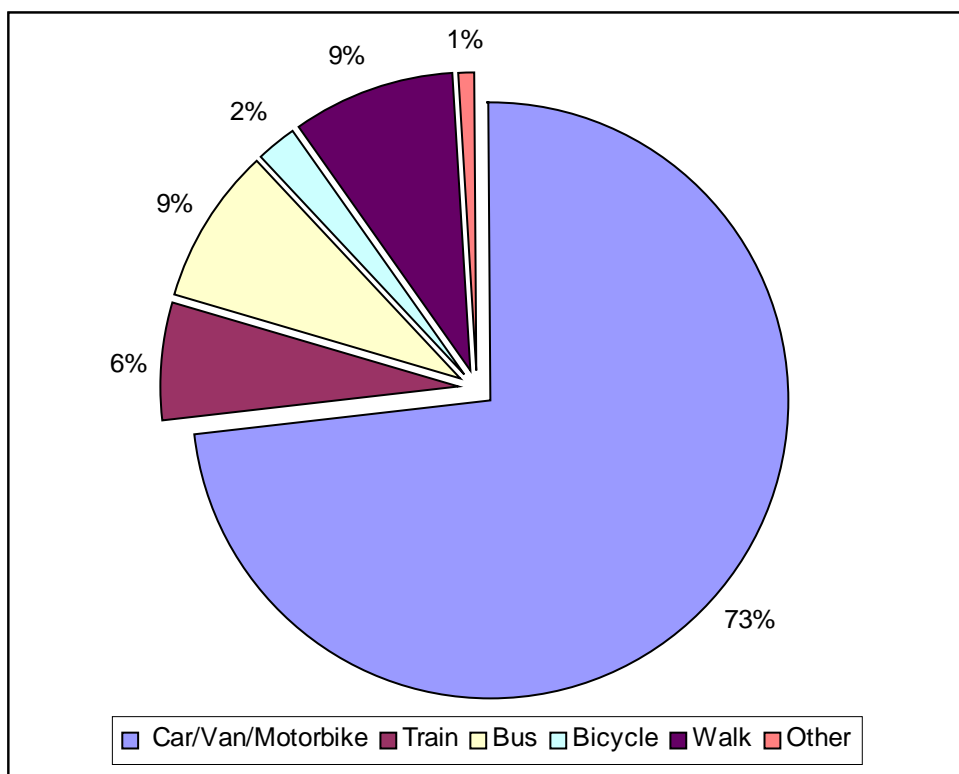
Indicator: Percentage of completed non-residential development complying with car parking standards set out in the Local Development Framework

Data to be collected

Indicator: Journey to work by location, mode and distance

Mode of travel to work: (Source: ONS 2001 Census)

Transport Mode	Car/Van/Motorbike	Train	Bus	Bicycle	Walk	Other
Number of People	85138	7279	10270	2291	10484	991

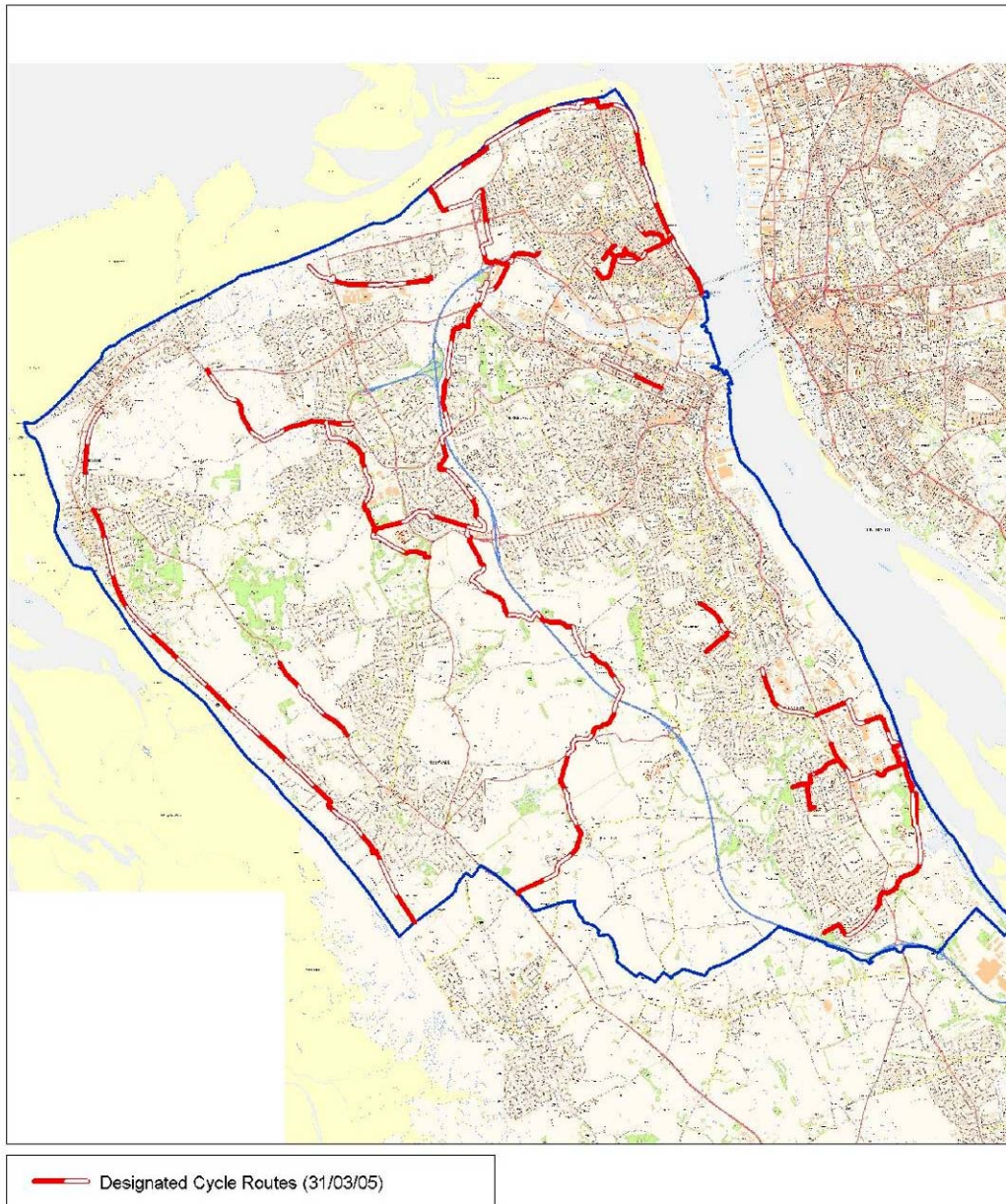


Distance Travelled to Work (Source: ONS 2001 Census)

	Working at or from home	Less than 2 km	2km to less than 5km	5km to less than 10km	10km to less than 20km	20km to less than 30km	30km to less than 40km	40km an over
Wirral	7%	17%	23%	25%	15%	4%	1%	2%
Merseyside	7%	19%	24%	24%	14%	4%	1%	2%

Indicator: Location and length of designated cycle tracks

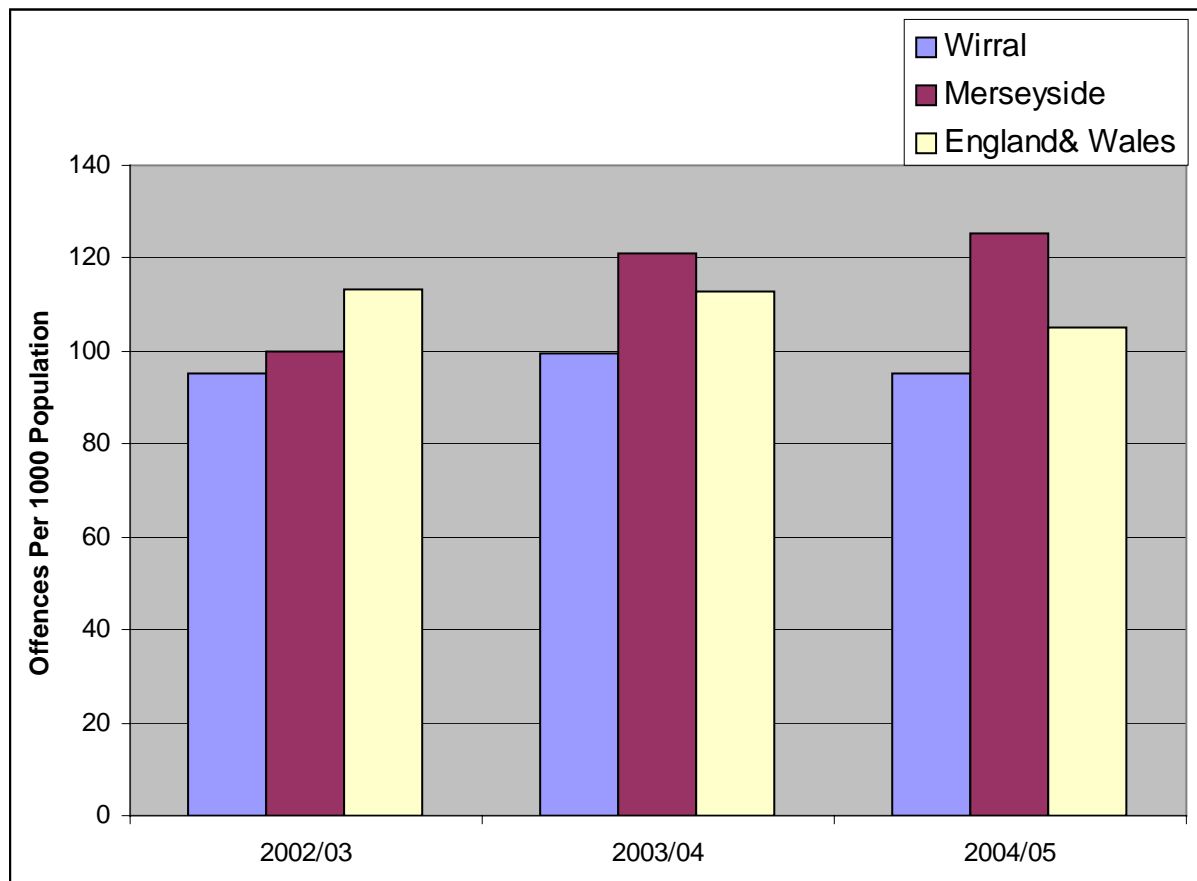
For the period April 1st 2004 to March 31st 2005 Wirral had a total cycle track network of 72.6 kilometres (45.1 miles) covering the whole of the borough.



This map is reproduced from Ordnance Survey material with the permission of Ordnance Survey on behalf of the Controller of Her Majesty's Stationary Office © Crown Copyright. Unauthorised reproduction infringes Crown copyright and may lead to prosecution or civil proceedings. Wirral Metropolitan Borough Council. Licence Number LA 100019803. Published 2005.

Objective 25: To minimise opportunities for crime and anti-social behaviour

Indicator: Crime rates per 1000 people



Source: Official Home Office CDRP Statistics 2002 to 2005.

Wirral had a total of 29,941 recorded crimes in 2004/05 (Home Office CDRP Statistics), this equates to a rate of 95.4 offences per 1000 population. This is a 4% reduction from the figure in 2003/04 (99.4 per 1000 population). In 2004/05 Wirral overall has a rate of crime 31.2% lower than the overall Merseyside figure and 10.2% lower than the national figure.

Indicator: Crime - violence against the person (rate per 1000 population)

Data to be collected

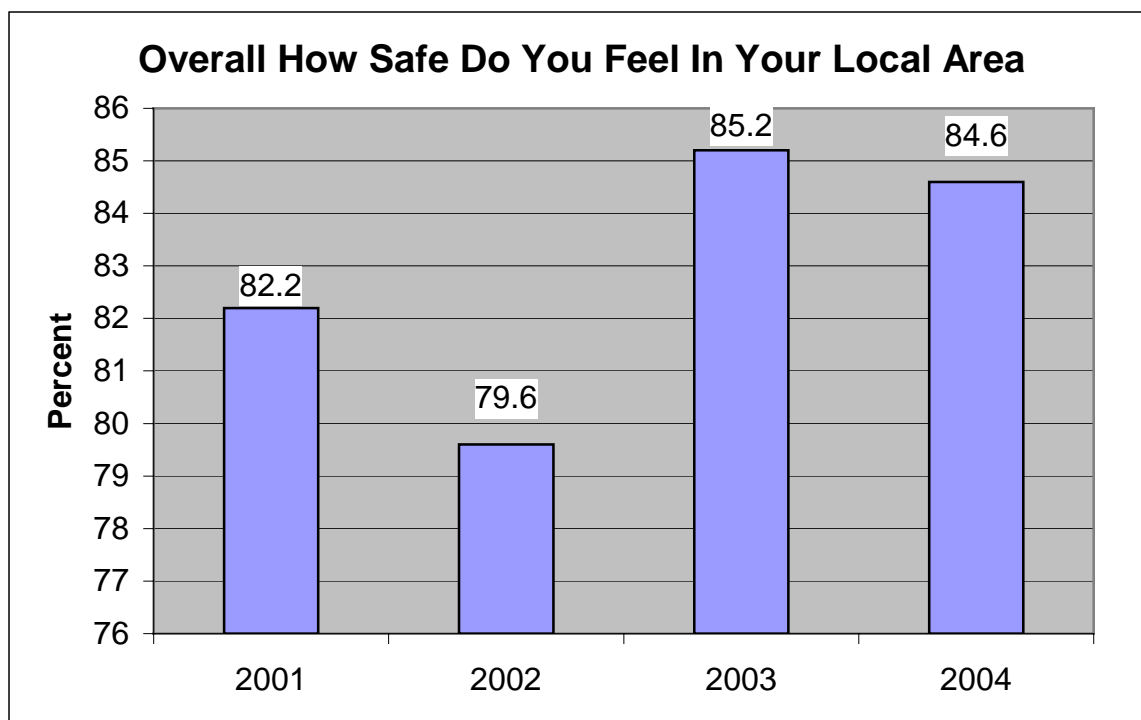
Indicator: Crime – burglary from a dwelling (rate per 1000 population)

Data to be collected

Indicator: Crime – theft from a motor vehicle (rate per 1000 population)

Data to be collected

Indicator: Proportion of people reporting fear of crime



Source: Wirral Citizens Panel 2001-2004.

Responses to the citizens panel question “Overall how safe do you feel in your local area?” were used to measure the fear of crime within Wirral. Overall in 2004 84.6% of the people interviewed said that they felt safe in their local area, therefore 15.4% reported a fear of crime in their local areas. This is a slight increase (0.6%) in the fear of crime from the previous year, but a decrease overall since 2001.