

WIRRAL CHILDREN'S TRUST BOARD – 28th May 2010

LOCAL AREA AGREEMENT 2009/10 - QUARTER 4

1.0 Background

Wirral's Local Area Agreement (LAA) is monitored by the Local Strategic Partnership (LSP). Wirral Children's Trust represents the Children's Block of the LSP and is responsible for the delivery of LAA targets related to children and young people. Quarterly reports related to the LAA targets are presented to the Board for scrutiny.

This report provides an update on progress towards targets, in addition information is provided to supply context to the indicators and to highlight any issues with reporting.

2.0 Recommendations:

2.1 That Wirral Children's Trust Board note the report.

Report Author:

Nancy Clarkson
Head of Planning and Performance

Contact:

Phone: 6664329
Email: nancyclarkson@wirral.gov.uk

Appendices:

Appendix 1 Local Area Agreement 2009/10 Quarter 4 Position

Wirral Children's Trust - Local Area Agreement Report

2009/10

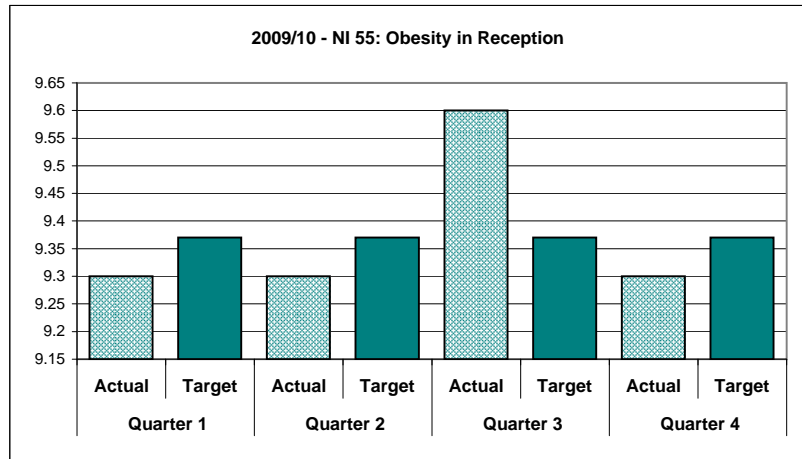
Quarter 4: January - March

Wirral Children's Trust - Local Area Agreement Report 2009/10

LAA Improvement Priority	Life Chances for Children and Young People
Performance Indicator	NI 55: Obesity in Reception
Sponsor	Howard Cooper
Lead Organisation	CYPD and Health
Service Area	Children and Young People's Department

Context
Estimates are based on previous school year's annual data and lower figures are better. Free weekly physical activity sessions for children under 5 years old are being set up predominately in Children Centres which are located in the higher areas of childhood obesity for Wirral.

Improvement Direction: Up							
Quarter 1		Quarter 2		Quarter 3		Quarter 4	
Actual	Target	Actual	Target	Actual	Target	Actual	Target
9.3	9.37	9.3	9.37	9.6	9.37	9.3	9.37

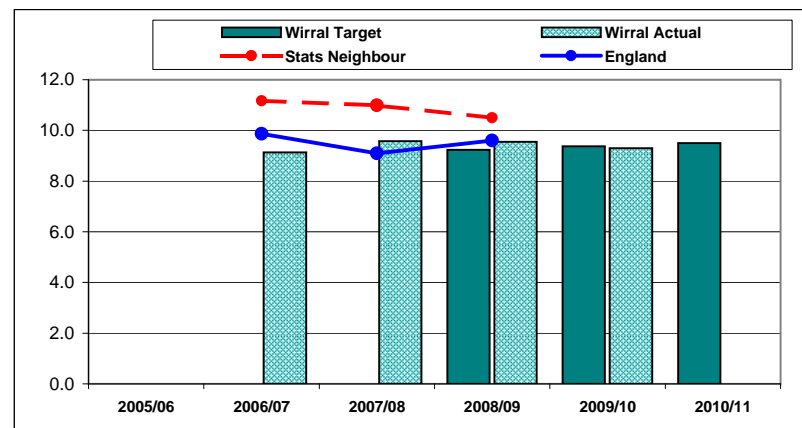


Positions Statement	RAG
Quarter One	Green
The School Nurse Support Team have been carrying out the weighing and measuring of the children since Easter and will continue to do so up to the school holidays which will complete the measuring phase. For the first time this year, the School Nurse Support Team have been delivering sessions and fun activities alongside the weighing and measuring which reinforce the healthy weight messages. The initial feedback from the children and school staff has been very positive and these sessions have been well received. Also this year, parents have received a feedback letter informing them of their child's weight. The School Nursing Service has received to date approximately 50-60 complaints in response to these letters and these issues are being recorded and answered. This feedback is being reported to the Department of Health. On 9th July at the regional National Child Measurement Programme workshop, Wirral will be presenting and feeding back our experiences of the routine feedback to parents as well as the new developments that we have added to this programme. We have received the resources which have been specifically designed to support this programme and individual workbooks have been designed for Reception and Year 6 school children as well as for parents.	

	2005/06	2006/07	2007/08	2008/09	2009/10	2010/11
Wirral Target	-	-	-	9.2	9.4	9.5
Wirral Actual	-	9.1	9.6	9.6	9.3	
Stats Neighbour	-	11.2	11.0	10.5	-	
England	-	9.9	9.1	9.6	-	

Quarter Two	Green
--------------------	--------------

Quarter Three	Green
----------------------	--------------



Quarter Four	Green
The National Child Measurement Programme (NCMP) recommenced in January 2010 for this academic year of reception and year 6 school children. Once again, all parents whose child is measured will receive a letter informing them of their child's weight.	
A pilot will take place to engage with targeted families and provide further support for children. Six schools have been identified based on their child obesity levels to be part of a pilot Active Lifestyles Project led by the School Sport Partnerships. These schools will offer additional activities on healthy eating and physical activity to children and their families. One member of staff from each of the schools has attended one day awareness training on obesity.	
NHS Wirral has been involved in research with the Department of Health about how we share our NCMP data.	

Wirral Children's Trust - Local Area Agreement Report 2009/10

LAA Improvement Priority	Safely Reducing the Number of Children Looked After
Performance Indicator	NI 68: Referrals to Initial Assessment
Sponsor	Howard Cooper
Lead Organisation	Children's Social Care
Service Area	Children and Young People's Department

Context

Safely reducing the number of looked after children is a key priority for all partners delivering services to children across Wirral. The cost of supporting so many children within the system is high. By reducing the numbers in care it is anticipated that resources can be used to increase family support and early intervention. Children who are LAC do not achieve as well academically as those that are not LAC. By reducing the numbers in care and improving attainment children can develop socially and economically, which will enable them to enter into work and in turn will benefit the Borough.

Partners are committed to using the Child Concern Model to enable early identification of children experiencing problems. When this model is operating fully Social Care staff will focus on prevention and support of families before they get into difficulties and the disruption caused by taking a child into care. Inevitably some cases are severe and, where a child is at risk, care proceedings will be implemented.

This priority also appears the Children and Young People's Plan and has been identified as an area for improvement by OfSTED and GONW.

Improvement Direction: Up

Quarter 1		Quarter 2		Quarter 3		Quarter 4	
Actual	Target	Actual	Target	Actual	Target	Actual	Target
44.6	72	60.9	72	64.7	72	71.7	72

Positions Statement

RAG

Quarter One

A full audit of the use of the ICS system has taken place by the newly appointed ICS project manager. As a result of this a revised training schedule has been developed. The ICS project plan has also been agreed for implementation. Systematic error reports will be in place from mid July and resources are in place to target support to those teams where it is most needed.

Quarter Two

There remains an increase in the level of referrals that are coming into Children's Social Care. More initial assessments are being completed than in the same period last year. As the ICS training is embedded the quality of data recording is increasing with an increase of almost 20% in this NI since Q1. A further increase is expected over the next quarter. Improved referral pathways are in place to ensure a more appropriate workflow between Central Advice and Duty Team (CADT) and area teams.

Quarter Three

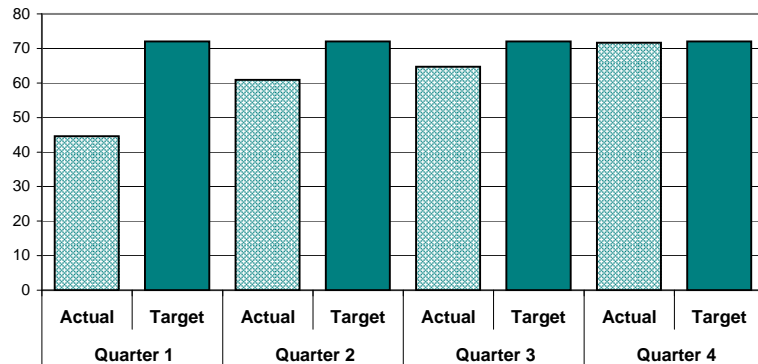
This NI has risen from 60.9% in Q2 to 64.7% in Q3, this is against a backdrop of sustained inflated referrals to Children's Social Care compared to the same period in the previous year. Single Central Advice and Duty Team (CADT) Manager is now in post to provide increased consistency, in addition, increased Area Team Leader capacity will commence from February 2010 to increase support for agencies undertaking Common Assessment Framework (CAF) and Team around the Child (TAC) meetings. Partnership work is ongoing to clarify domestic violence referrals, improved guidance in place at CADT. A number of new social workers have been in place since October and interviewing for the new Social Care structure is ongoing, the majority of posts are expected to be filled by March 2010. Further action in progress includes, embedding multiagency teams, ongoing scrutiny by LSCB of consistent threshold application and consistent Social Care decision making and timely data input. The continued impact of an increased numbers of social workers and the embedding of the new structure is expected to increase this figure further by the end of March. However, it is expected that the year end outturn will fall short of the year end

Quarter Four

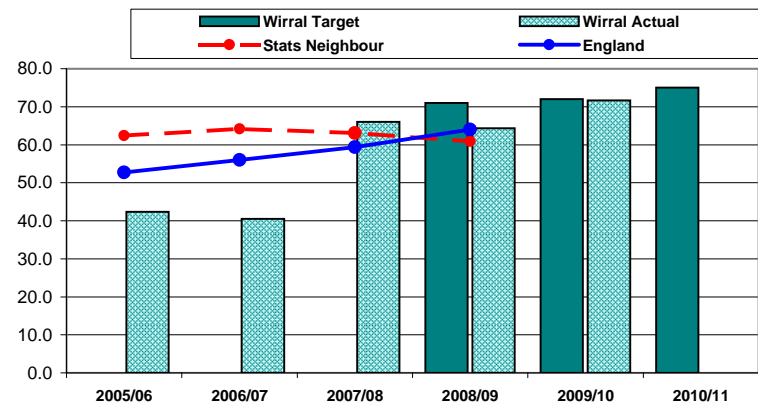
Green

(P) This is a provisional figure. Final data to be published June 2010.

2009/10 - NI 68: Referrals to Initial Assessment



	2005/06	2006/07	2007/08	2008/09	2009/10	2010/11
Wirral Target	-	-	-	71.0	72.0	75.0
Wirral Actual	42.4	40.5	66.0	64.3	71.7	
Stats Neighbour	62.4	64.1	63.1	60.9	-	
England	52.7	56.0	59.4	64.0	-	

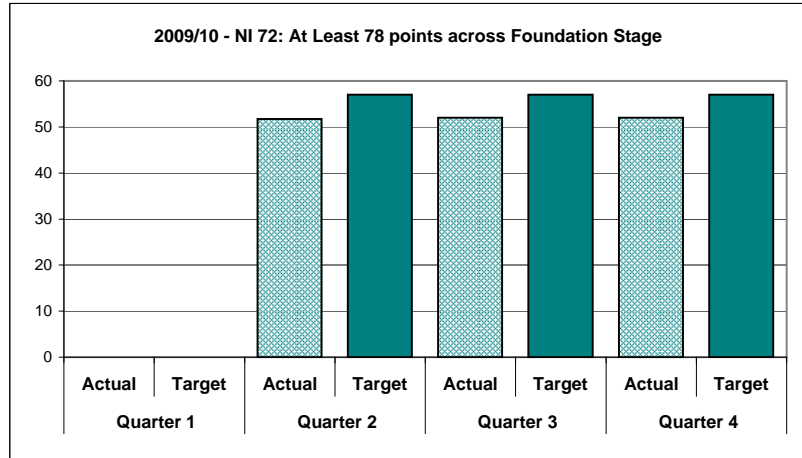


Wirral Children's Trust - Local Area Agreement Report 2009/10

LAA Improvement Priority	Life Chances for Children and Young People
Performance Indicator	NI 72: At Least 78 points across Foundation Stage
Sponsor	Howard Cooper
Lead Organisation	Learning & Achievement
Service Area	Children and Young People's Department

Context							

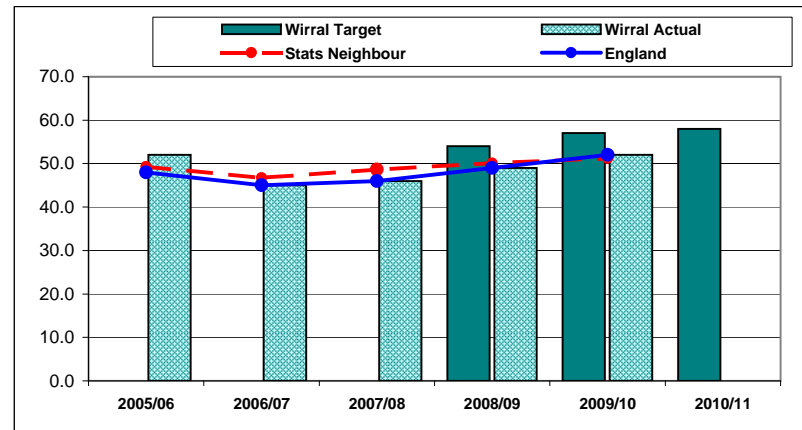
Improvement Direction: Up							
Quarter 1		Quarter 2		Quarter 3		Quarter 4	
Actual	Target	Actual	Target	Actual	Target	Actual	Target
-	-	51.7	57	52	57	52	57



Positions Statement		RAG
Quarter One		Amber
Quarter Two		Amber
Quarter Three		Amber
Quarter Four		Amber

Support is in place regarding the use and analysis of data at LA, school and setting levels to identify children who are at risk of underachieving. Children, classes and schools making less than expected progress or with weaknesses in provision are identified for early literacy, speaking and listening support. Individual and collective support is provided for local networks. Practitioners are embedding best practice in the teaching of early literacy skills to develop the transition from Reception to year 1. The school-based leadership of the early literacy agenda is being strengthened in order that schools may build the capacity to sustain their own improvements. School Improvement Partners (SIPS) are enabled to develop their brokering role in early literacy improvement.

	2005/06	2006/07	2007/08	2008/09	2009/10	2010/11
Wirral Target	-	-	-	54.0	57.0	58.0
Wirral Actual	52.0	45.0	46.0	49.0	52.0	
Stats Neighbour	49.3	46.7	48.6	50.1	51.2	
England	48.0	45.0	46.0	49.0	52.0	

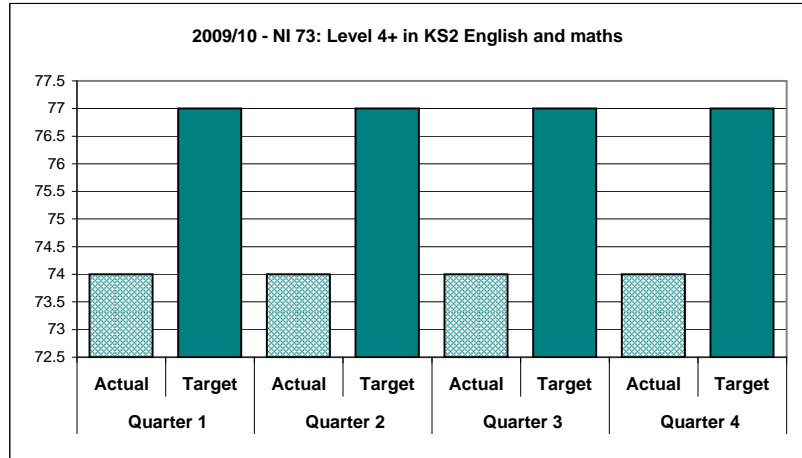


Wirral Children's Trust - Local Area Agreement Report 2009/10

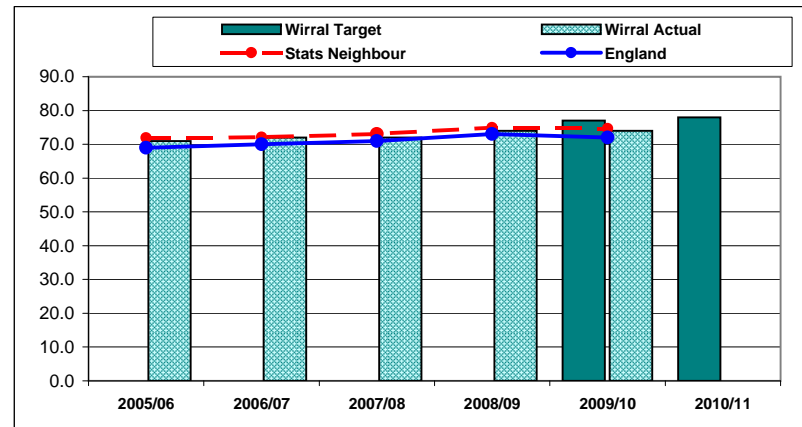
LAA Improvement Priority	Life Chances for Children and Young People
Performance Indicator	NI 73: Level 4+ in KS2 English and maths
Sponsor	Howard Cooper
Lead Organisation	Learning & Achievement
Service Area	Children and Young People's Department

Context							

Improvement Direction: Same							
Quarter 1		Quarter 2		Quarter 3		Quarter 4	
Actual	Target	Actual	Target	Actual	Target	Actual	Target
74	77	74	77	74	77	74	77



	2005/06	2006/07	2007/08	2008/09	2009/10	2010/11
Wirral Target	-	-	-	-	77.0	78.0
Wirral Actual	71.0	72.0	72.0	74.0	74.0	
Stats Neighbour	71.9	72.1	73.0	74.9	74.7	
England	69.0	70.0	71.0	73.0	72.0	



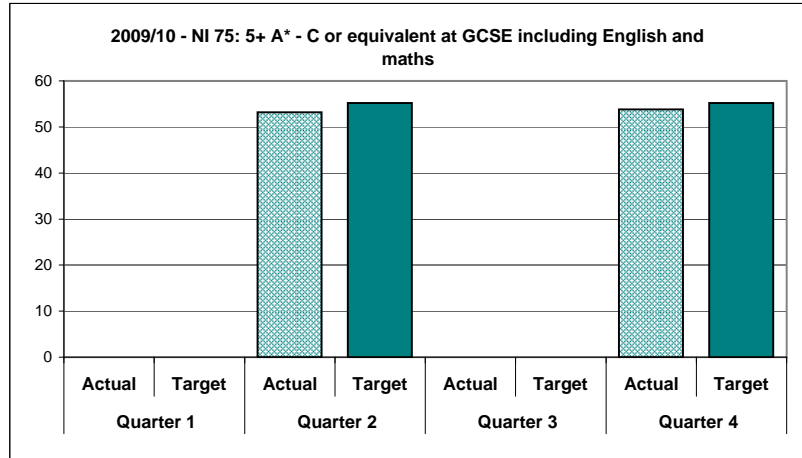
Positions Statement		RAG
Quarter One		Green
<p>This data release is still provisional and therefore subject to change at a future date. There are number of schools sending English scripts back for remarking. School Improvement Teams will analyse the attainment data both at LA, school and subject level. In particular they will be analyzing data in especially where results have been markedly different from school predictions. Through this the teams will identify schools where there is evidence of underperformance and target them for detailed monitoring, challenge, intervention and support. There will be targeting of intensive consultant support to schools, to ensure there is accelerated progress in English and maths. English and mathematics teams have projects and training plans for next academic year to target schools. There is ongoing National Strategies training that we expect schools to engage with. School Improvement Partners will discuss with head teachers reasons for underperformance and what corrective action is needed at a school level. SIPS (and Consultants in our Intensive Support Programme schools) are being asked to have discussions with Head Teacher and Senior Leadership Team about progress in Y4 to ascertain the percentage of pupils on track with</p>		
Quarter Two		Green
<p>This data release is still provisional and therefore subject to change at a future date. There are number of schools sending English scripts back for remarking. School Improvement Teams will analyse the attainment data both at LA, school and subject level. In particular they will be analyzing data in especially where results have been markedly different from school predictions. Through this the teams will identify schools where there is evidence of underperformance and target them for detailed monitoring, challenge, intervention and support. There will be targeting of intensive consultant support to schools, to ensure there is accelerated progress in English and maths. English and mathematics teams have projects and training plans for next academic year to target schools. There is ongoing National Strategies training that we expect schools to engage with. School Improvement Partners will discuss with head teachers reasons for underperformance and what corrective action is needed at a school level. SIPS (and Consultants in our Intensive Support Programme schools) are being asked to have discussions with Head Teacher and Senior Leadership Team about progress in Y4 to ascertain the percentage of pupils on track with</p>		
Quarter Three		Green
<p>This data release is still provisional and therefore subject to change at a future date. There are number of schools sending English scripts back for remarking. School Improvement Teams will analyse the attainment data both at LA, school and subject level. In particular they will be analyzing data in especially where results have been markedly different from school predictions. Through this the teams will identify schools where there is evidence of underperformance and target them for detailed monitoring, challenge, intervention and support. There will be targeting of intensive consultant support to schools, to ensure there is accelerated progress in English and maths. English and mathematics teams have projects and training plans for next academic year to target schools. There is ongoing National Strategies training that we expect schools to engage with. School Improvement Partners will discuss with head teachers reasons for underperformance and what corrective action is needed at a school level. SIPS (and Consultants in our Intensive Support Programme schools) are being asked to have discussions with Head Teacher and Senior Leadership Team about progress in Y4 to ascertain the percentage of pupils on track with</p>		
Quarter Four		Green
<p>School Improvement Teams analyse the attainment data both at LA, school and subject level. With a particular focus where results have been markedly different from school predictions. Through this the teams identify schools where there is evidence of underperformance and target them for detailed monitoring, challenge, intervention and support. Targeting of intensive consultant support, to ensure there is accelerated progress in English and maths is in place. English and mathematics teams have projects and training plans to target schools. There is ongoing National Strategies training that we expect schools to engage with. School Improvement Partners will discuss with head teachers reasons for underperformance and what corrective action is needed at a school level. SIPS (and Consultants in our Intensive Support Programme schools) are discussing with Head Teachers and Senior Leadership Teams progress in Y4 to ascertain the percentage of pupils on track with 1 level progress, and what action is planned for those children not on track. In particular there is a focus on identifying children on track for L4+ in either English or maths but not both and again what action is planned. Where there are specific concern</p>		

Wirral Children's Trust - Local Area Agreement Report 2009/10

LAA Improvement Priority	Life Chances for Children and Young People
Performance Indicator	NI 75: 5+ A* - C or equivalent at GCSE including English and math
Sponsor	Howard Cooper
Lead Organisation	Learning & Achievement
Service Area	Children and Young People's Department

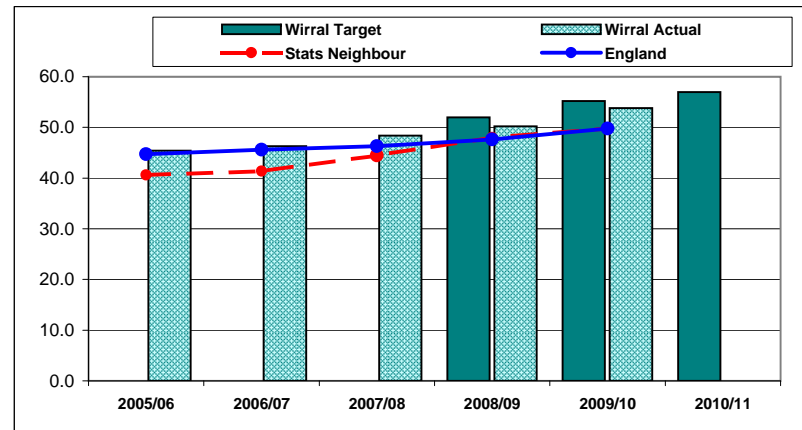
Context							

Improvement Direction: Up							
Quarter 1		Quarter 2		Quarter 3		Quarter 4	
Actual	Target	Actual	Target	Actual	Target	Actual	Target
-	-	53.2	55.2	-	-	53.8	55.2



Positions Statement		RAG
Quarter One		Green
Quarter Two		Green
Quarter Three		Green
Quarter Four		Green

	2005/06	2006/07	2007/08	2008/09	2009/10	2010/11
Wirral Target	-	-	-	52.0	55.2	57.0
Wirral Actual	45.4	46.3	48.4	50.2	53.8	
Stats Neighbour	40.6	41.4	44.5	48.0	49.8	
England	44.7	45.6	46.3	47.6	49.8	

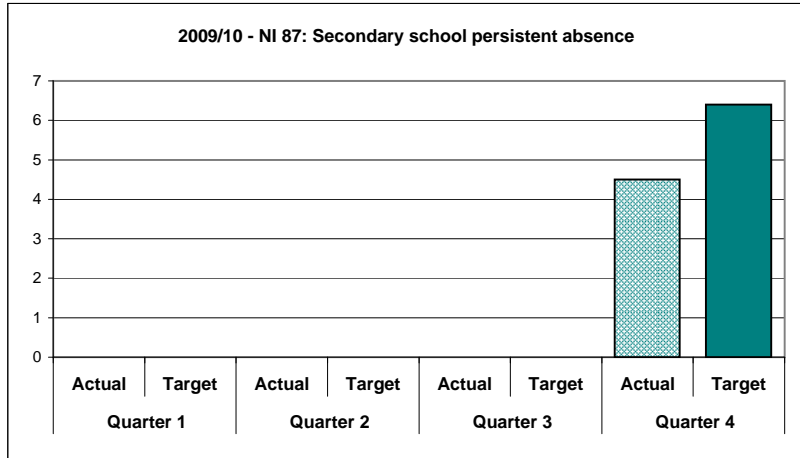


Wirral Children's Trust - Local Area Agreement Report 2009/10

LAA Improvement Priority	Life Chances for Children and Young People
Performance Indicator	NI 87: Secondary school persistent absence ▼
Sponsor	Howard Cooper
Lead Organisation	Learning & Achievement
Service Area	Children and Young People's Department

Context
A lower figure in this indicator represents better performance.

Improvement Direction: Up							
Quarter 1		Quarter 2		Quarter 3		Quarter 4	
Actual	Target	Actual	Target	Actual	Target	Actual	Target
-	-	-	-	-	-	4.5	6.4



Positions Statement **RAG**

Quarter One Green

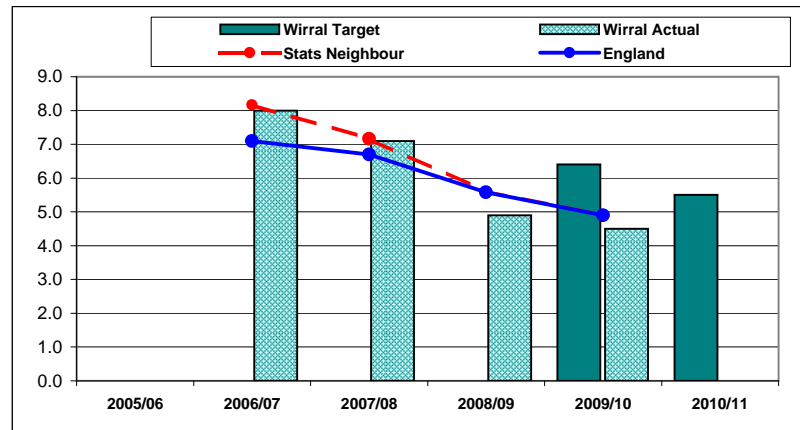
Quarter Two Green

Quarter Three Green

Quarter Four Green

Strategies have been implemented very effectively in priority secondary schools. Good practice is now being shared across all secondary schools.

	2005/06	2006/07	2007/08	2008/09	2009/10	2010/11
Wirral Target	-	-	-	-	6.4	5.5
Wirral Actual	-	8.0	7.1	4.9	4.5	
Stats Neighbour	-	8.2	7.2	5.6	4.9	
England	-	7.1	6.7	5.6	4.9	

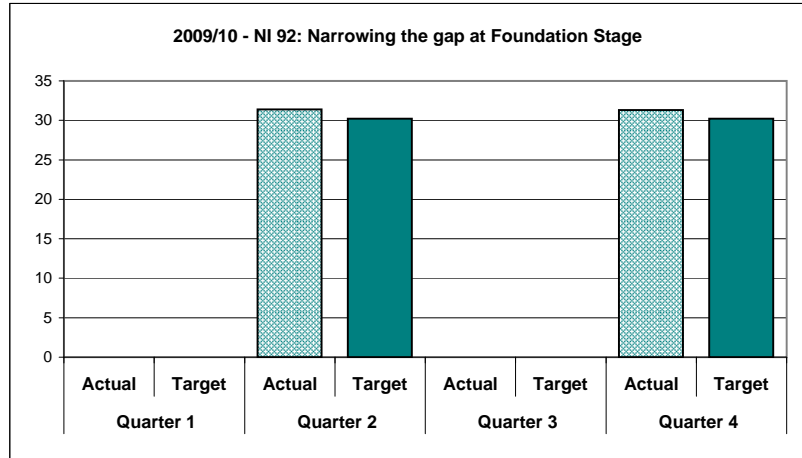


Wirral Children's Trust - Local Area Agreement Report 2009/10

LAA Improvement Priority	Life Chances for Children and Young People
Performance Indicator	NI 92: Narrowing the gap at Foundation Stage
Sponsor	Howard Cooper
Lead Organisation	Learning & Achievement
Service Area	Children and Young People's Department

Context	
A lower figure in this indicator represents better performance.	

Improvement Direction: Same							
Quarter 1		Quarter 2		Quarter 3		Quarter 4	
Actual	Target	Actual	Target	Actual	Target	Actual	Target
-	-	31.4	30.2	-	-	31.3	30.2



Positions Statement RAG

Quarter One Green

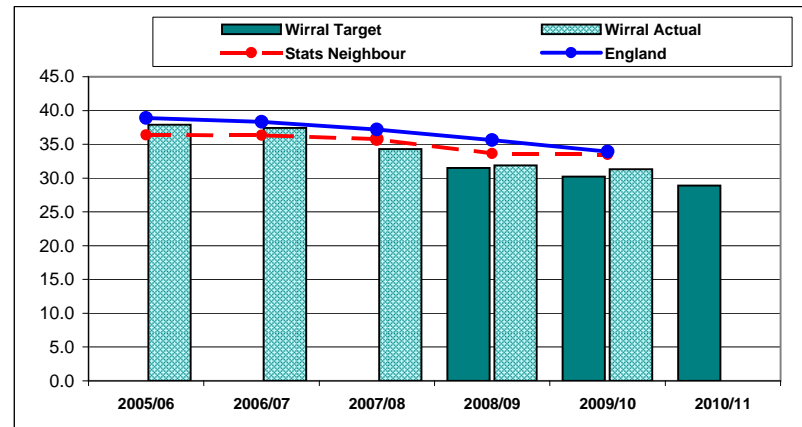
Quarter Two Green

Quarter Three Green

Quarter Four Green

The gap between the lowest performing 20% and the rest is continuing to reduce year on year. However improving literacy skills particularly with boys, continues to remain a focus for the LA. There are now 27 schools participating in the National Strategies "Communication Language and Literacy Development" (CLLD) project. High profile has been given to training in relation to boys learning and development through specific projects. The LA is now looking to support schools embed this in day to day practice by linking all training to focus on boys including the Every Child a Talker (ECAT) project and the Social and Emotional Aspects of Development (SEAD) materials. The Every Child a Talker project has a unique multi agency approach with health and schools and there is strong links with the CLLD project through a joint consultant.

	2005/06	2006/07	2007/08	2008/09	2009/10	2010/11
Wirral Target	-	-	-	31.5	30.2	28.9
Wirral Actual	37.9	37.4	34.3	31.9	31.3	
Stats Neighbour	36.4	36.3	35.8	33.6	33.5	
England	38.9	38.3	37.2	35.6	33.9	

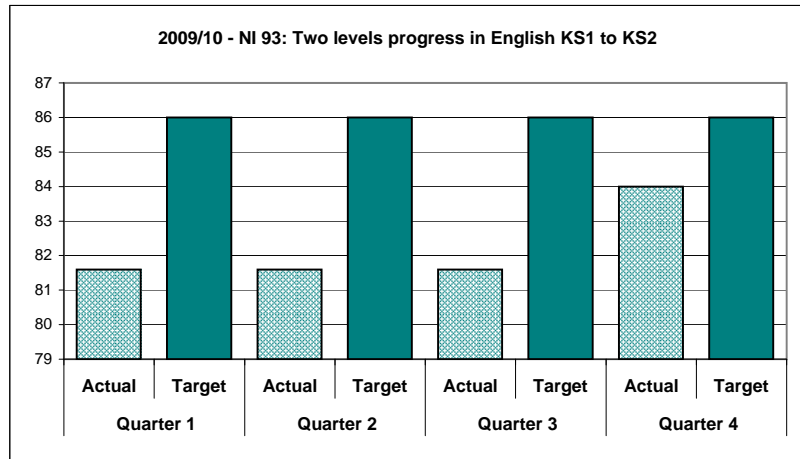


Wirral Children's Trust - Local Area Agreement Report 2009/10

LAA Improvement Priority	Life Chances for Children and Young People
Performance Indicator	NI 93: Two levels progress in English KS1 to KS2
Sponsor	Howard Cooper
Lead Organisation	Learning & Achievement
Service Area	Children and Young People's Department

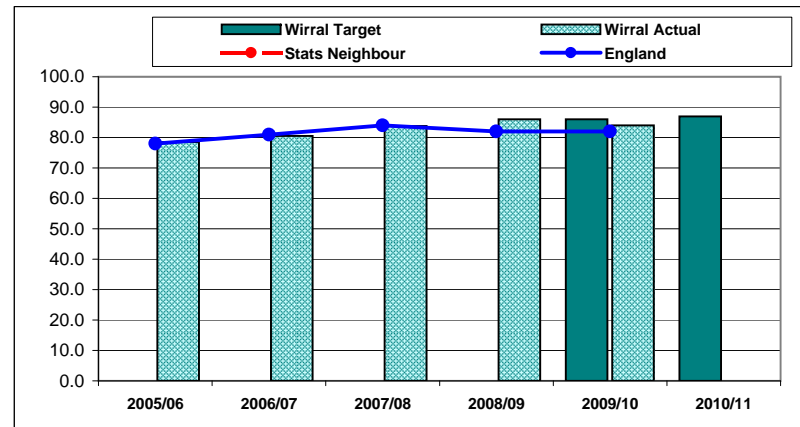
Context	

Improvement Direction: Same							
Quarter 1		Quarter 2		Quarter 3		Quarter 4	
Actual	Target	Actual	Target	Actual	Target	Actual	Target
81.6	86	81.6	86	81.6	86	84	86



Positions Statement		RAG
Quarter One		Green
Quarter Two	This data release is still provisional and therefore subject to change at a future date. There are number of schools sending English scripts back for remarking. School Improvement Teams will analyse the attainment data both at LA, school and subject level. In particular they will be analyzing data in especially where results have been markedly different from school predictions. Through this the teams will identify schools where there is evidence of underperformance and target them for detailed monitoring, challenge, intervention and support. There will be targeting of intensive consultant support to schools, to ensure there is accelerated progress in English and maths. English and mathematics teams have projects and training plans for next academic year to target schools. There is ongoing National Strategies training that we expect schools to engage with. School Improvement Partners will discuss with head teachers reasons for underperformance and what corrective action is needed at a school level. SIPS (and Consultants in our Intensive Support Programme schools) are being asked to have discussions with Head Teacher and Senior Leadership Team about progress in Y4 to ascertain the percentage of pupils on track with	Green
Quarter Three		Green
Quarter Four	Develop effective guided work, with improved guidance and alignment to Assessing Pupils' Progress (APP), as a key component in strengthening fit-for-purpose pedagogy in literacy. Strengthen and embed teachers' subject knowledge and understanding of progression in literacy, both inside and across year boundaries, particularly in writing. Implement Every Child a Writer Programme including the development of leading teachers. Promote Speaking and Listening APP process and support curriculum provision. Address the needs of vulnerable and underperforming groups, drawing on the Narrowing the Gaps materials for literacy subject leaders. Ensure that Reading Recovery teachers are sufficiently influencing the development of quality first teaching in early reading, writing.	Green

	2005/06	2006/07	2007/08	2008/09	2009/10	2010/11
Wirral Target	-	-	-	-	86.0	87.0
Wirral Actual	78.5	80.5	83.8	86.0	84.0	
Stats Neighbour	77.9	-	-	-	-	
England	78.0	81.0	84.0	82.0	82.0	

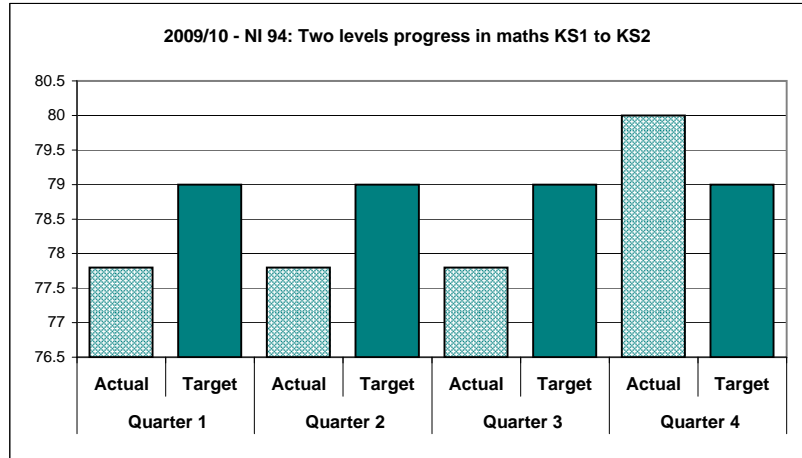


Wirral Children's Trust - Local Area Agreement Report 2009/10

LAA Improvement Priority	Life Chances for Children and Young People
Performance Indicator	NI 94: Two levels progress in maths KS1 to KS2
Sponsor	Howard Cooper
Lead Organisation	Learning & Achievement
Service Area	Children and Young People's Department

Context							

Improvement Direction: Up							
Quarter 1		Quarter 2		Quarter 3		Quarter 4	
Actual	Target	Actual	Target	Actual	Target	Actual	Target
77.8	79	77.8	79	77.8	79	80	79



Positions Statement RAG

Quarter One Green

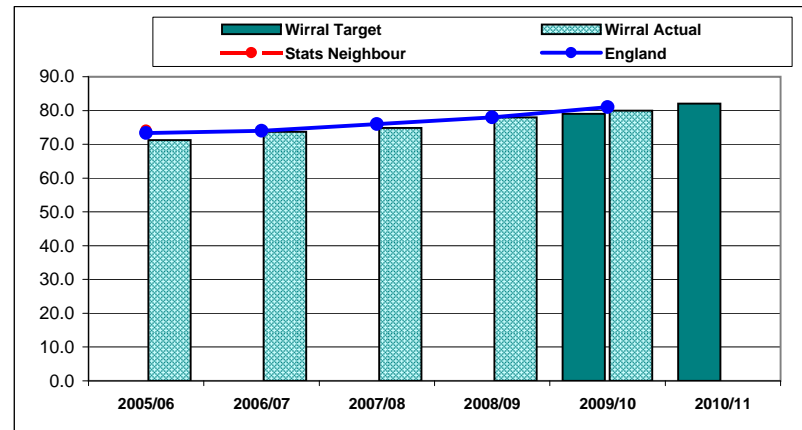
Quarter Two Green

This data release is still provisional and therefore subject to change at a future date. There are number of schools sending English scripts back for remarking. School Improvement Teams will analyse the attainment data both at LA, school and subject level. In particular they will be analyzing data in especially where results have been markedly different from school predictions. Through this the teams will identify schools where there is evidence of underperformance and target them for detailed monitoring, challenge, intervention and support. There will be targeting of intensive consultant support to schools, to ensure there is accelerated progress in English and maths. English and mathematics teams have projects and training plans for next academic year to target schools. There is ongoing National Strategies training that we expect schools to engage with. School Improvement Partners will discuss with head teachers reasons for underperformance and what corrective action is needed at a school level. SIPS (and Consultants in our Intensive Support Programme schools) are being asked to have discussions with Head Teacher and Senior Leadership Team about progress in Y4 to ascertain the percentage of pupils on track with

Quarter Three Green

Quarter Four Green

	2005/06	2006/07	2007/08	2008/09	2009/10	2010/11
Wirral Target	-	-	-	-	79.0	82.0
Wirral Actual	71.2	73.7	74.8	78.0	80.0	
Stats Neighbour	74.1	-	-	-	-	
England	73.3	74.0	76.0	78.0	81.0	

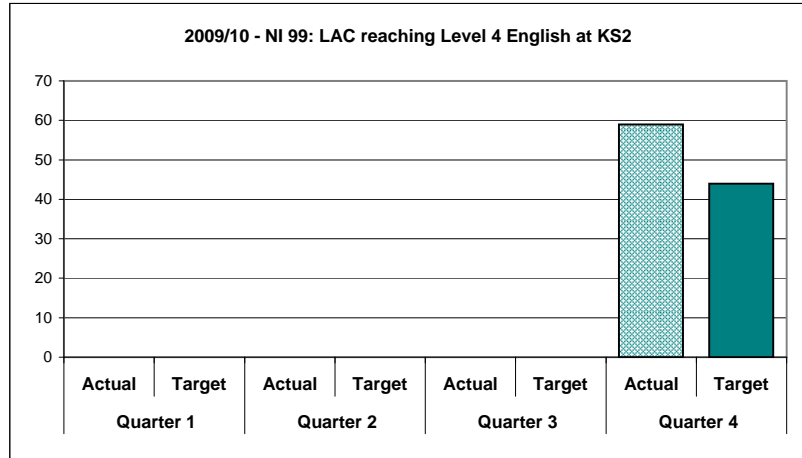


Wirral Children's Trust - Local Area Agreement Report 2009/10

LAA Improvement Priority	Life Chances for Children and Young People
Performance Indicator	NI 99: LAC reaching Level 4 English at KS2
Sponsor	Howard Cooper
Lead Organisation	Learning & Achievement
Service Area	Children and Young People's Department

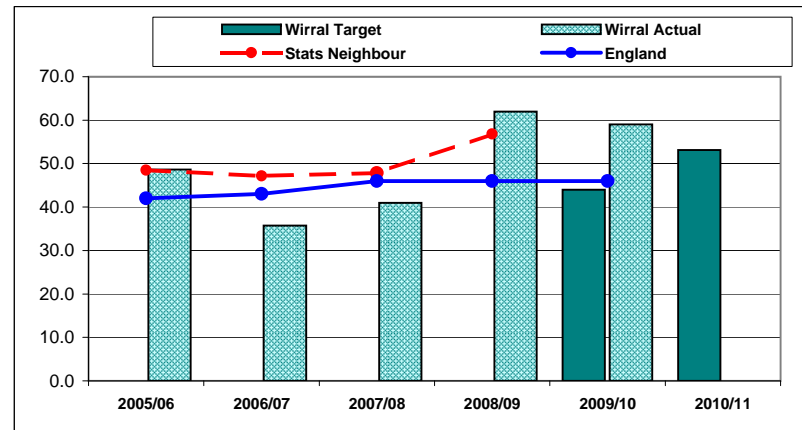
Context							

Improvement Direction: Down							
Quarter 1		Quarter 2		Quarter 3		Quarter 4	
Actual	Target	Actual	Target	Actual	Target	Actual	Target
-	-	-	-	-	-	59	44



Positions Statement		RAG
Quarter One		Green
Quarter Two		Green
Quarter Three		Green
Quarter Four		Green

	2005/06	2006/07	2007/08	2008/09	2009/10	2010/11
Wirral Target	-	-	-	-	44.0	53.1
Wirral Actual	48.6	35.7	41.0	62.0	59.0	
Stats Neighbour	48.5	47.1	47.8	56.8	-	
England	42.0	43.0	46.0	46.0	46.0	

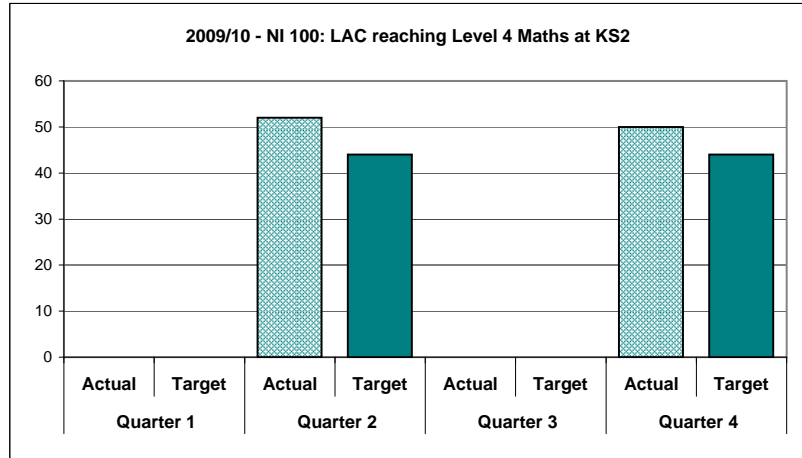


Wirral Children's Trust - Local Area Agreement Report 2009/10

LAA Improvement Priority	Life Chances for Children and Young People
Performance Indicator	NI 100: LAC reaching Level 4 Maths at KS2
Sponsor	Howard Cooper
Lead Organisation	Learning & Achievement
Service Area	Children and Young People's Department

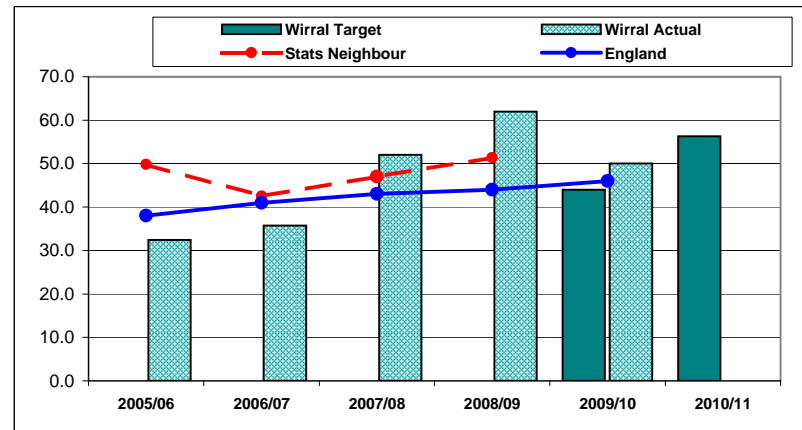
Context							

Improvement Direction: Down							
Quarter 1		Quarter 2		Quarter 3		Quarter 4	
Actual	Target	Actual	Target	Actual	Target	Actual	Target
-	-	52	44	-	-	50	44



Positions Statement		RAG
Quarter One		Green
Quarter Two		Green
Quarter Three		Green
Quarter Four		Green

	2005/06	2006/07	2007/08	2008/09	2009/10	2010/11
Wirral Target	-	-	-	-	44.0	56.3
Wirral Actual	32.4	35.7	52.0	62.0	50.0	
Stats Neighbour	49.8	42.5	47.0	51.3	-	
England	38.0	41.0	43.0	44.0	46.0	

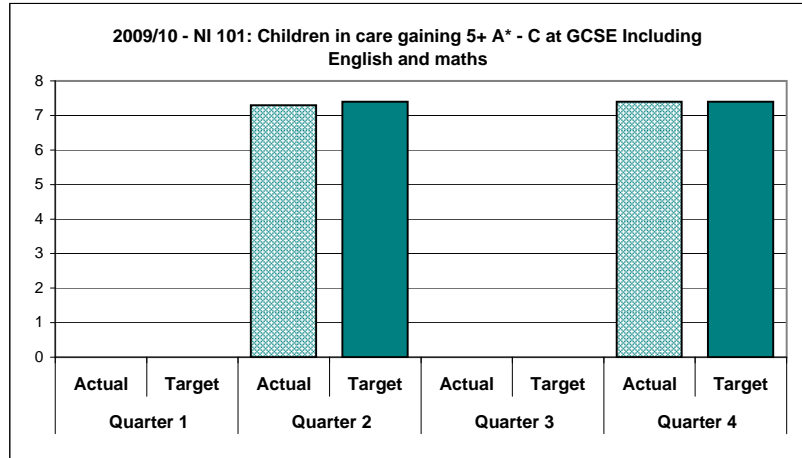


Wirral Children's Trust - Local Area Agreement Report 2009/10

LAA Improvement Priority	Life Chances for Children and Young People
Performance Indicator	NI 101: Children in care gaining 5+ A* - C at GCSE Including Engl
Sponsor	Howard Cooper
Lead Organisation	Learning & Achievement
Service Area	Children and Young People's Department

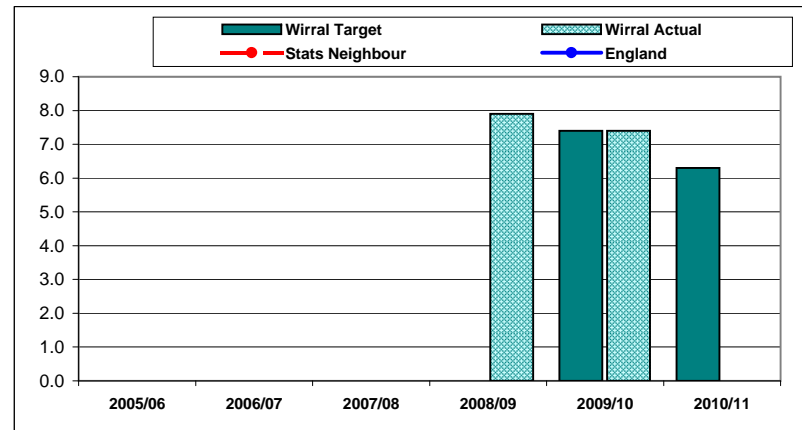
Context							

Improvement Direction: Down							
Quarter 1		Quarter 2		Quarter 3		Quarter 4	
Actual	Target	Actual	Target	Actual	Target	Actual	Target
-	-	7.3	7.4	-	-	7.4	7.4



Positions Statement		RAG
Quarter One		Green
Quarter Two		Green
Quarter Three		Green
Quarter Four	(P) Provisional 2009/10 local data, published data is not available.	Green

	2005/06	2006/07	2007/08	2008/09	2009/10	2010/11
Wirral Target	-	-	-	-	7.4	6.3
Wirral Actual	-	-	-	7.9	7.4	-
Stats Neighbour	-	-	-	-	-	-
England	-	-	-	-	-	-



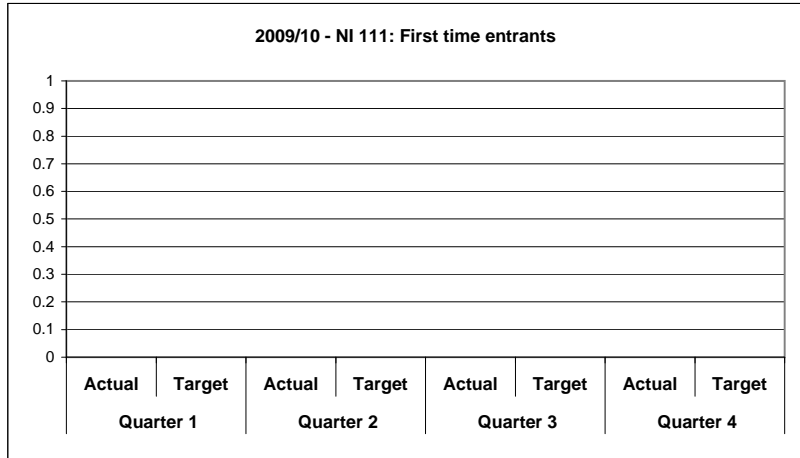
Wirral Children's Trust - Local Area Agreement Report 2009/10

LAA Improvement Priority	Life Chances for Children and Young People
Performance Indicator	NI 111: First time entrants
Sponsor	Howard Cooper
Lead Organisation	Youth Offending Service
Service Area	Children and Young People's Department

Context

Improvement Direction: N/A

Quarter 1		Quarter 2		Quarter 3		Quarter 4	
Actual	Target	Actual	Target	Actual	Target	Actual	Target
-	-	-	-	-	-	0	0



Positions Statement RAG

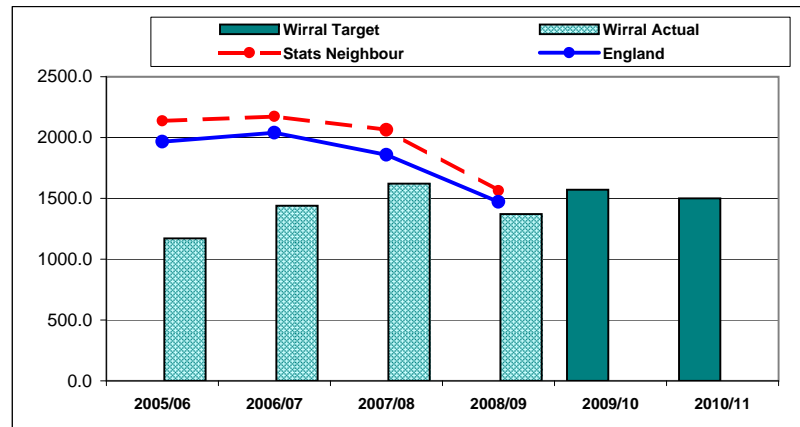
Quarter One

Quarter Two

Quarter Three

Quarter Four
This data will be published as a local data set on 2 June 2010.

	2005/06	2006/07	2007/08	2008/09	2009/10	2010/11
Wirral Target	-	-	-	-	1570.0	1500.0
Wirral Actual	1170.0	1440.0	1620.0	1370.0	0.0	
Stats Neighbour	2137.0	2173.0	2064.0	1562.0	-	
England	1966.0	2039.0	1857.0	1472.0	-	

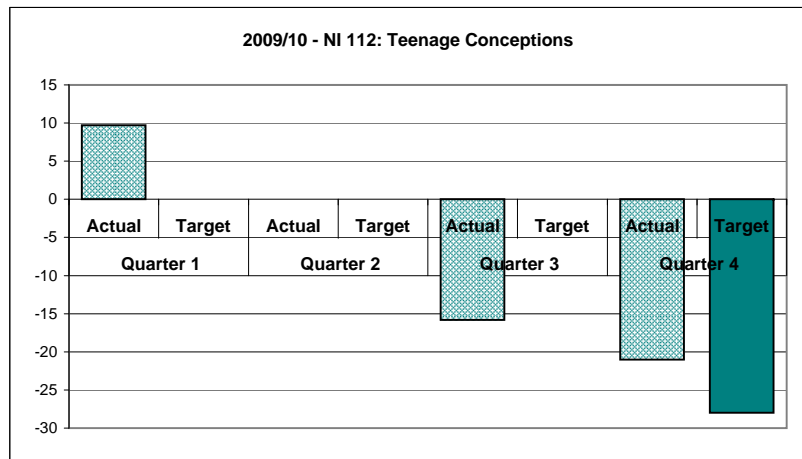


Wirral Children's Trust - Local Area Agreement Report 2009/10

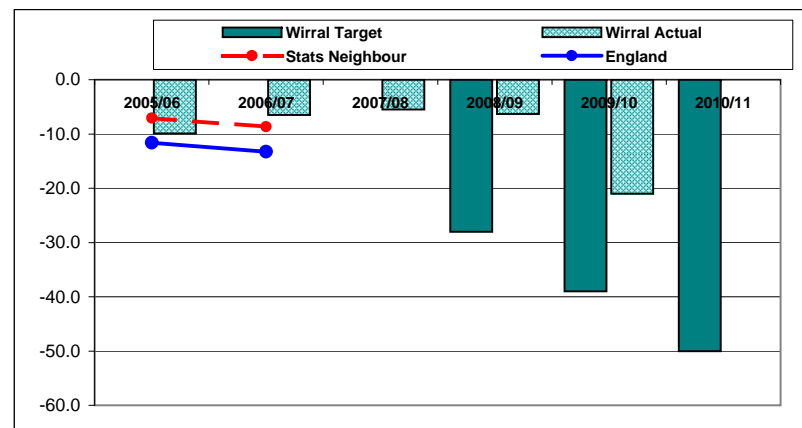
LAA Improvement Priority	Reduction in Teenage Conceptions
Performance Indicator	NI 112: Teenage Conceptions
Sponsor	Julia Hassall
Lead Organisation	Children's Social Care
Service Area	Children and Young People's Department

Context
Reducing teenage pregnancy is a key strategic objective for partners. Young parenthood remains an acceptable lifestyle choice in the most deprived wards where there is a lack of economic opportunity and a high number of young people are disengaged from education or employment. Wards with a high level of deprivation persistently exhibit rates that are near to or twice the national average. Young women in these wards are more likely to get pregnant and continue with their pregnancy. However, it is also important to note that terminations occurring in more affluent wards of West Wirral are also contributing to the over conception rate. This priority also appears the Children and Young People's Plan and has been identified as an area for improvement by Ofsted and Government Office North West.

Improvement Direction: Up							
Quarter 1		Quarter 2		Quarter 3		Quarter 4	
Actual	Target	Actual	Target	Actual	Target	Actual	Target
9.7	-	*-10.34	-	-15.8	-	-21	-28



	2005/06	2006/07	2007/08	2008/09	2009/10	2010/11
Wirral Target	-	-	-	-28.0	-39.0	-50.0
Wirral Actual	-9.9	-6.5	-5.5	-6.3	-21.0	
Stats Neighbour	-7.1	-8.7	-	-	-	
England	-11.6	-13.3	-	-	-	



Positions Statement RAG

Quarter One Red

The Teenage Pregnancy Strategy Coordinator post has been vacant since the end of April 2009 and will be advertised July 2009, with interviews held early in September 2009. The Project Officer post will be advertised in August 2009. Both posts have been covered on a temporary basis. Quarterly figure is for Jan-Mar 2008, as per the definition

Quarter Two Red

*The data reported is for calendar year 2008 (-10.34%) The Teenage Pregnancy Strategy Coordinator post has been covered on a temporary basis but a permanent post holder will begin work shortly. The latest data continues to show a slight drop in the rate of teenage conceptions. In addition there has been a significant fall in the number of terminations which is often linked to teenage conceptions.

Quarter Three Red

New Teenage Pregnancy Strategy Coordinator in post from 7th December 2009 to drive forward Teenage Pregnancy Strategic Action Plan following temporary cover this vacancy. Teenage conception rates for Wirral are showing a steady decline. This is against the national and regional trend. Current performance (Oct 2007- Sept 2008) is 42.6 compared with 47.2 in 2007. Continued commitment by partners is required to implement the initiatives within the Teenage Pregnancy Strategic Action Plan to deliver this challenging target. All sections of the Teenage Pregnancy Strategic Action Plan are being progressed. Teenage Pregnancy Media campaign was launched on September 14, 2009 and was repeated in December 2009 for a further month. First phase of Health Services in Schools were launched in the first 12 schools from November 2009 with further schools to follow by the end of March 2010.

Quarter Four Red

In order to reduce the teenage conception rate further in Wirral, targeted support interventions will continue to be developed and implemented for the most vulnerable groups. Recommendations made in the refreshed National Teenage Pregnancy Strategy will also be incorporated into the Strategic Priority Action Plan to ensure gaps in provision are addressed. Further actions implemented since the last reporting period include:
 Rolling programme of sexual health training for Children and Young People workforce, including further development of training courses for foster carers. 533 staff attended multi-agency Sex and Relationships training between April 2009 and March 2010.
 Young Parent's Advisor post was extended and is based within Connexions and conducts risk assessments with all pregnant girls under the age of 19 that access the Young Women's Antenatal Clinic at Arrowe Park. Alongside the service offered by the Teenage Pregnancy Midwife the postholder is able to advise pregnant teenagers and their partners on issues such as housing, finances, education and employment, offending and drug and alcohol abuse, with a view to reducing high risk behaviours and offering crisis intervention.
 Development of targeted support programmes for hotspot areas – Virtual Babies Education Programme and Peer Mentoring Education Programme to run in new academic year.
 Health Services in Schools implementation already showing encouraging results, full implementation planned for July 2010. Expansion of Wirral Brook LARC provision. Further de

Wirral Children's Trust - Local Area Agreement Report 2009/10

LAA Improvement Priority	Reduction in the numbers of NEETs
Performance Indicator	NI 117: Percentage NEET
Sponsor	Sheila Lynch
Lead Organisation	Connexions
Service Area	Children and Young People's Department

Improvement Direction: Same

Quarter 1		Quarter 2		Quarter 3		Quarter 4	
Actual	Target	Actual	Target	Actual	Target	Actual	Target
10.4	8.3	9.8	8.2	8.7	7.1	8.9	7.1

Context

Significant progress has been made in reducing the numbers of 16-18 year olds who are not in employment, education or training. Although higher than average numbers of young people continue in learning after year 11, the proportion of young people NEET is above similar councils. More recently the recession has seen an increase in the number of young people who are leaving employment, particularly with no qualifications up to Level 2.

The number of young people NEET is higher than at 16 and there is still much work to be done to remove barriers to participation in learning or employment, particularly for the vulnerable groups of young people i.e. those who are looked after, those with learning disabilities and difficulties, those with substance misuse issues, teenage parents and young offenders.

In response to consultation young people expressed views regarding the information that they needed if they were to make a successful transition to the labour market. Concerns about finance were significant in relation to fees, benefits, EMA and how to avoid getting into debt. The ability to become financially independent and have the means to access suitable housing was also a worry; these concerns have been addressed in the improvement strategy.

This priority also appears the Children and Young People's Plan and has been identified as an area for improvement by OfSTED and GONW.

Positions Statement

RAG

Quarter One

There are a variety of factors contributing to the current rise in the number of young people who are NEET. The economic downturn has seen an increase in the number of young people who are leaving employment, particularly with no qualifications up to Level 2. Connexions, LSC and Work Based Learning federation are working closely to ensure that provision is being made available and accessible for young people particularly in relation to ensuring appropriate E2E provision. Additional provision is now in place until the end of contract year and it is anticipated that 2009 leavers should also receive sufficient places.

The extension of the September Guarantee to include all 17 year olds who finished statutory education in 2008 means that intensive tracking and support is being put in place to ensure that an offer of a place in learning is an entitlement for the eligible cohort. Combined with the focus on 2009 leavers, this should have a positive impact on re-engaging young people into learning and/or appropriate provision. The focussed activity will help to identify any specific provision issues/gaps which can in turn be raised with the LSC.

The advent of the 'Wirral Apprentices' programme will provide a range of opportunities for NEET young people to enter into sustainable learning.

Quarter Two

The 16-18 NEET rate in Wirral at the end of September 2009 of 9.79% (against a target of 8.18%) is an improvement to that at the end of September 08 which was 10.23%. This decrease comes despite the economic downturn and contracting employment opportunities available to young people in certain areas. The Wirral Apprentices (the pledge of 100 Apprenticeship opportunities for young people) is beginning to bear fruit with appointment processes well underway. Beneath the headline figures there are significant variances between communities and wards across the borough and the 16-18 NEET group is also now predominantly in the older age range with over 50% of 16-18 year old NEETs being 18. The use of advanced GIS mapping capability is being used to inform targeted interventions and resource planning to meet need.

Quarter Three

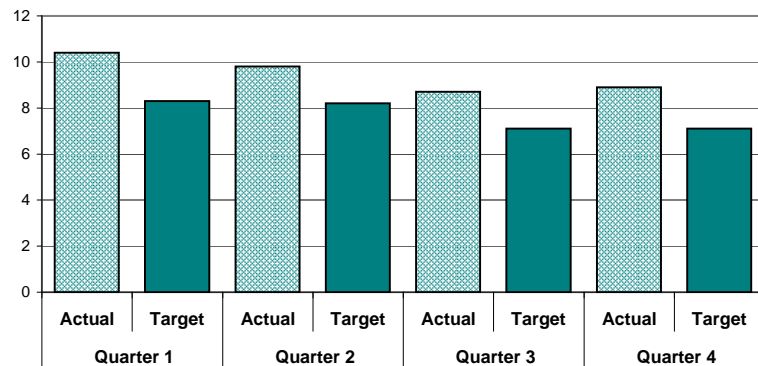
EET and In Learning rates continue to improve for young people in Wirral and during November there were 90 leavers from NEET who moved into EET destinations. In terms of NEET 'churn', the leavers exceeded joiners by 11 young people. This is not necessarily the case across the GM region. In conclusion NEET rates are continuing to decrease in Wirral in a relatively consistent manner across the area. Of the 16-18yr NEET cohort, 48.74% are 18 year olds. This is a trend reflected across GM region but in Wirral this figure has shown a decrease within the last two months and could be linked to: Following its' successful pilot in Bebington, Wirral is making excellent progress in terms of developing joint working practices between Core PAs and Adult Next Step Advisers. Innovative approaches are being developed to ensure maximum coverage and the close working relationships that exist with Job Centre Plus are enhancing this. A clear strategy is now in place for supporting 18 and 19 year olds which is beginning to have an impact on the contact rates and tracking in order to be able to best support this cohort. Integrated operational and performance management processes have been agreed to maximise the provision and oppo

Quarter Four

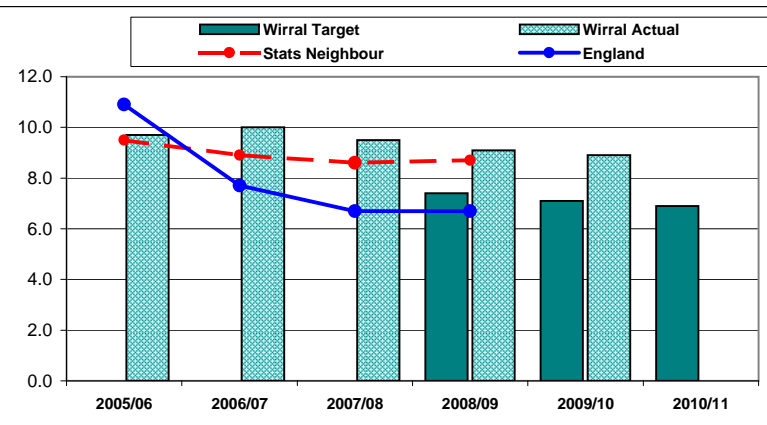
Red

A newly formed TIGER group has been formed to address the issue of NEET with a particular emphasis on agreeing shared actions in order to meet the required reduction percentage for the PSA target. This is a further 2% reduction from current position. This is chaired by Mike Potter, the Principal of Wirral Metropolitan College. The group will meet on a regular basis with a task and finish approach. The first task is to map available provision against the preferences of the active NEET group. An initial action plan has been produced with joint accountabilities. Work towards the January Guarantee is well underway. The eligible cohort (young people of academic age 16 and 17) will be continually tracked and monitored via performance submissions to DCSF up until the 31st March 2010. As this is the first year of introduction, there were no targets set or previous year's benchmarks regarding achievement of the guarantee. Focus also remains on supporting 18 year olds NEET, an increasing group, helping them to secure places in education, employment or training if that is the most appropriate option for them. This also comes at a time of significant new opportunities through Jobcentre Plus with the implementation of

2009/10 - NI 117: Percentage NEET



	2005/06	2006/07	2007/08	2008/09	2009/10	2010/11
Wirral Target	-	-	-	7.4	7.1	6.9
Wirral Actual	9.7	10.0	9.5	9.1	8.9	-
Stats Neighbour	9.5	8.9	8.6	8.7	-	-
England	10.9	7.7	6.7	6.7	-	-

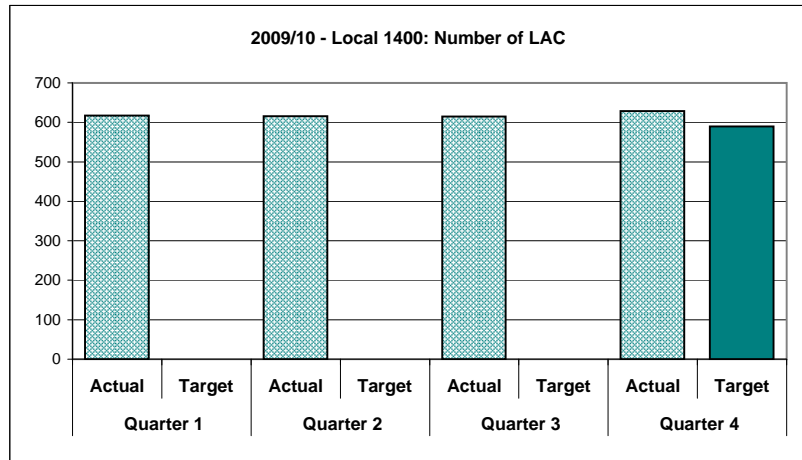


Wirral Children's Trust - Local Area Agreement Report 2009/10

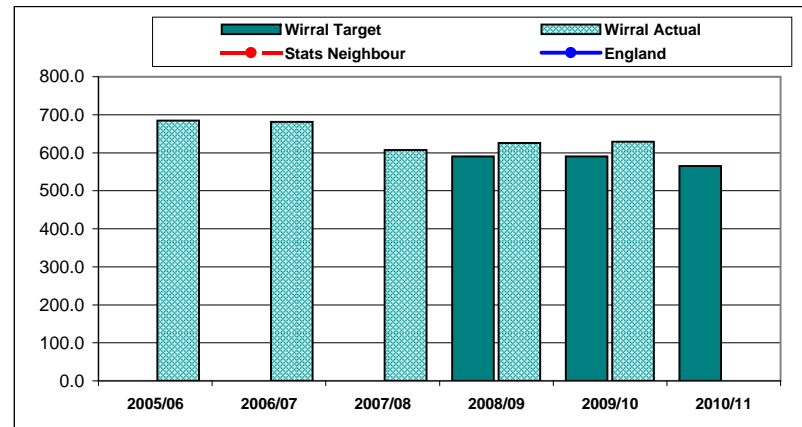
LAA Improvement Priority	Safely Reducing the Number of Children Looked After
Performance Indicator	Local 1400: Number of LAC
Sponsor	Julia Hassall
Lead Organisation	Children's Social Care
Service Area	Children and Young People's Department

Context
<p>Safely reducing the number of looked after children is a key priority for all partners delivering services to children across Wirral. The cost of supporting so many children within the system is high. By reducing the numbers in care it is anticipated that resources can be used to increase family support and early intervention. Children who are LAC do not achieve as well academically as those that are not LAC. By reducing the numbers in care and improving attainment children can develop socially and economically, which will enable them to enter into work and in turn will benefit the Borough.</p> <p>Partners are committed to using the Child Concern Model to enable early identification of children experiencing problems. When this model is operating fully Social Care staff will focus on prevention and support of families before they get into difficulties and the disruption caused by taking a child into care. Inevitably some cases are severe and, where a child is at risk, care proceedings will be implemented.</p> <p>This priority also appears the Children and Young People's Plan and has been identified as an area for improvement by OfSTED and GONW.</p>

Improvement Direction: Same							
Quarter 1		Quarter 2		Quarter 3		Quarter 4	
Actual	Target	Actual	Target	Actual	Target	Actual	Target
617	-	616	-	615	-	629	590



	2005/06	2006/07	2007/08	2008/09	2009/10	2010/11
Wirral Target	-	-	-	590.0	590.0	565.0
Wirral Actual	685.0	681.0	607.0	626.0	629.0	
Stats Neighbour	-	-	-	-	-	
England	-	-	-	-	-	



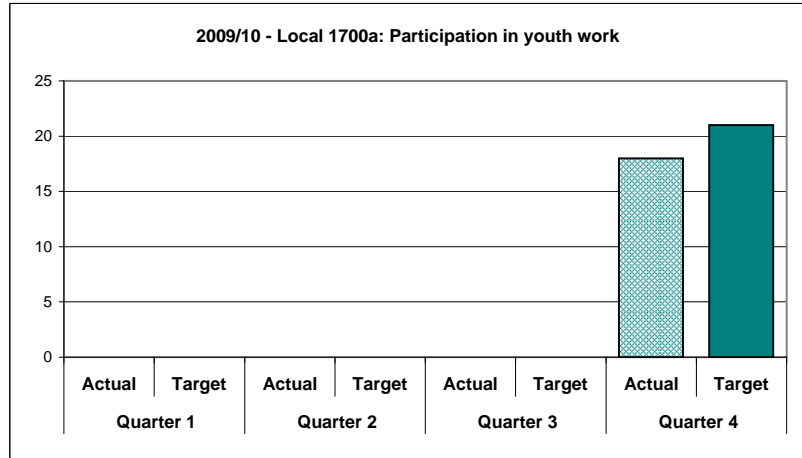
Positions Statement	RAG
Quarter One	<p>The department continues to embed preventative services to reduce the number of children meeting the thresholds for becoming looked after. Concern and focus is on children safely leaving the care system, there is an element of delay here due to the low prioritisation of guardians to discharging care order proceedings.</p>
Quarter Two	
Quarter Three	<p>Targets are not set for numbers of Children in Care. The department continues to embed preventative services to reduce the number of children meeting the thresholds for becoming looked after. Concern and focus is on children safely leaving the care system, while ensuring that children are kept safe from significant harm.</p>
Quarter Four	Amber
<p>(P) Continued focussed planning is in place to reduce numbers of children in care; where safe and feasible. Preventative measures include investment in Area Teams and preventative initiatives such as Multi-systemic Therapy and Family Group Conferencing. There is continued focus on supporting children to achieve permanence through adoption and special guardianship. A project plan is in place to reduce the numbers of children placed with parents. Principal Team Managers have been recruited to improve tight tracking of children's cases, to reduce the likelihood of drift, and a team looked after children tracking tool is in place.</p>	

Wirral Children's Trust - Local Area Agreement Report 2009/10

LAA Improvement Priority	Life Chances for Children and Young People
Performance Indicator	Local 1700a: Participation in youth work
Sponsor	Peter Edmondson
Lead Organisation	Participation and Inclusion
Service Area	Children and Young People's Department

Context

Improvement Direction: Down							
Quarter 1		Quarter 2		Quarter 3		Quarter 4	
Actual	Target	Actual	Target	Actual	Target	Actual	Target
-	-	-	-	-	-	18	21



Positions Statement **RAG**

Quarter One Red

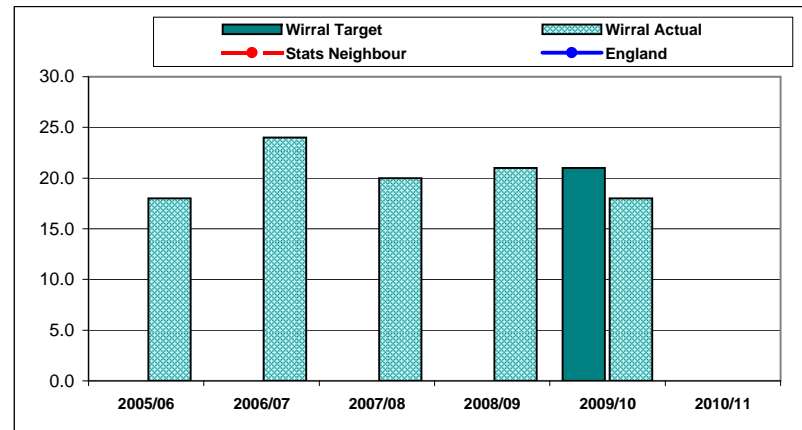
Quarter Two Red

Quarter Three Red

Quarter Four Red

Following a period where there has been a vacancy factor and we have been unable to fill posts the service is now reconfigured and is more attractive to young people with the Hub about to launch. These 4 "super centres", one in each district of Wirral will offer more services and attract more young people to engage in positive activity.

	2005/06	2006/07	2007/08	2008/09	2009/10	2010/11
Wirral Target	-	-	-	-	21.0	-
Wirral Actual	18.0	24.0	20.0	21.0	18.0	-
Stats Neighbour	-	-	-	-	-	-
England	-	-	-	-	-	-


















Direction of Travel Summary

% PIs	No. of PIs	
41.18%	7	Improved by more than 2.5% on previous year's performance
23.53%	4	Deteriorated by more than 2.5% on previous year's performance
29.41%	5	Stayed within +/-2.5% of previous year's performance
5.88%	1	Awaiting data
0.00%	0	Not applicable
100.00%	17	(Note: percentages rounded to 2 decimal places)

Target Summary

% PIs	No. of PIs	
47.06%	8	Green (within +10/-5% of the target)
11.76%	2	Amber (missed target by between 5% and 10%)
17.65%	3	Red (missed target by more than 10%)
17.65%	3	Over-performing (more than 10% of the target)
5.88%	1	Awaiting data
0.00%	0	Target not set
0.00%	0	Not Applicable
100.00%	17	(Note: percentages rounded to 2 decimal places)

PI No.	Title	09/2010 Target	09/2010 Actual	On Target	Direction of Travel
NI 55	Obesity in primary school age children in Reception	9.37%	9.3% (Lower is Better)	Green	
NI 68	Percentage of referrals to children's social care going on to initial assessment	72%	71.7%	Green	
NI 72	Achievement of at least 78 points across the Early Years Foundation Stage with at least 6 in each of the scales in Personal Social and Emotional Development and Communication, Language and Literacy	57%	52%	Amber	
NI 73	Achievement at level 4 or above in both English and Maths at Key Stage 2	77%	74%	Green	
NI 75	Achievement of 5 or more A*- C grades at GCSE or equivalent including English and Maths	55.2%	53.8%	Green	

NI 87	Secondary school persistent absence rate	6.4%	4.5% (Lower is Better)	Over Performing	
NI 92	Narrowing the gap between the lowest achieving 20% in the Early Years Foundation Stage Profile and the rest	30.2%	31.3% (Lower is Better)	Green	
NI 93	Progression by 2 levels in English between Key Stage 1 and Key Stage 2	86%	84%	Green	
NI 94	Progression by 2 levels in Maths between Key Stage 1 and Key Stage 2	79%	80%	Green	
NI 99	Looked after children reaching level 4 in English at Key Stage 2	44%	59%	Over Performing	
NI 100	Looked after children reaching level 4 in maths at Key Stage 2	44%	50%	Over Performing	
NI 101	Looked after children achieving 5 A*-C GCSEs (or equivalent) at Key Stage 4 (including English and maths)	7.4%	7.4%	Green	
NI 111	First time entrants into the YJS aged 10 - 17	1570	Awaiting Data		
NI 112	Percentage reduction in the under 18 conception rate	-28%	-21% (Lower is Better)	Red	
NI 117	16 to 18 year olds who are not in education, employment or training (NEET)	7.1%	8.9% (Lower is Better)	Red	
LOCAL 1400	Number of looked after children	590	629 (Lower is Better)	Amber	
LOCAL 1700a	Participation in and outcomes from youth work: Participation	21%	18%	Red	