

WIRRAL CHILDREN'S TRUST BOARD – 19th NOVEMBER 2010

LOCAL AREA AGREEMENT 2010/11 - QUARTER 2

1.0 Background

Wirral's Local Area Agreement (LAA) is monitored by the Local Strategic Partnership (LSP). Wirral Children's Trust represents the Children's Block of the LSP and is responsible for the delivery of LAA targets related to children and young people. Quarterly reports related to the LAA targets are presented to the Board for scrutiny. This report provides an update on progress towards targets, in addition information is provided to supply context to the indicators and to highlight any issues with reporting.

2.0 Reporting at Quarter 2



The Secretary of State for Communities and Local Government wrote to Councils on 13 October 2010 to inform them that under section 109 of the Local Government and Public Involvement in Health act 2007, all designations of local improvement targets in the Local Area Agreement have been revoked with immediate effect. In addition, as part of the budget deficit reduction there will be no payments made for Performance Reward Grants against the 2008-11 LAA targets. As a result of these national changes the Council is now reviewing the indicators in the LAA and the targets set.

At quarter 2 there is limited data available and all of the Key Stage data is still provisional. For reporting purposes the LAA indicators can be separated into three groups:

1. Former reward indicators
2. Attainment indicators
3. Local indicators

3.0 Reporting

Former Reward Indicators

| PI No. | Title | Yr End Target | Yr End Forecast | Quarter 2 Target | Quarter 2 Actual | On Target | Direction of Travel |
|--------|--|------------------------|-----------------|------------------|------------------|-----------------|---|
| NI 68 | Percentage of referrals to children's social care going on to initial assessment | 75% | 85% | 75% | 90.4% (P) | Over Performing |  |
| NI 117 | 16 to 18 year olds who are not in education, employment or training (NEET) | 6.9% (Lower is Better) | 8.0% | 6.9% | 8.9% (P) | Red |  |

For NI 68 significant improved performance in 2009/10 has been maintained in quarter 2. Current trajectory analysis indicates that the year end target will be exceeded. For NI 117 although there has been sustained improvement the current economic climate impacts heavily on this indicator. Continuing intervention work is underway and the direction of travel is improving however economic uncertainty makes achieving the 2010/11 target unlikely. A revised forecast of 8% has now been set.

Former reward indicators with no data at quarter 2

| PI No. | Title | 08/2009 Actual | 09/2010 Actual | 2010/2011 Actual | 2010/2011 Target |
|--------|---|----------------|----------------|------------------|------------------|
| NI 55 | Obesity in primary school age children in Reception (lower is better) | 9.57 | 9.3% | | 9.50% |
| NI 111 | First time entrants into the YJS aged 10 – 17 (lower is better) | 1578 | N/A | | 1500 |
| NI 112 | Percentage reduction in the under 18 conception rate | -6.3 | -21% | | -39% |

NI 55 is determined by an annual measurement programme. Wirral did achieve the 2010/11 target in 2009/10 however the expectation is for obesity to increase and the target set is to reduce this increase.

Data from the Youth Justice Board for NI 111 is not yet available. The impact of partnership intervention programmes particularly police involvement in restorative justice indicates that improvement on the 2008/09 figure will be possible.

For NI 112 although significant improvement was achieved in 2009/10 and intervention programmes are in place the 2010/11 year end target remains extremely challenging.

Provisional attainment indicators for 2009/10 academic year (2010/11 Financial Year)



| PI No. | Title | Yr End Target | Yr End Forecast | Quarter 2 Target | Quarter 2 Actual | On Target | Direction of Travel |
|--------|---|-------------------------|-----------------|------------------|------------------|-----------------|---------------------|
| NI 72 | Achievement of at least 78 points across the Early Years Foundation Stage with at least 6 in each of the scales in Personal Social and Emotional Development and Communication, Language and Literacy | 57% | 58% | 57% | 58% (A) | Green | ↑ |
| NI 73 | Achievement at level 4 or above in both English and Maths at Key Stage 2 | 78% | 75.0% | 78% | 75.0% (P) | Green | ↔ |
| NI 75 | Achievement of 5 or more A*- C grades at GCSE or equivalent including English and Maths | 57.0% | 57.4% | 57.0% | 58.6% (P) | Green | ↑ |
| NI 92 | Narrowing the gap between the lowest achieving 20% in the Early Years Foundation Stage Profile and the rest | 28.6% (Lower is Better) | 27.9% | 28.6% | 27.6% (A) | Green | ↑ |
| NI 93 | Progression by 2 levels in English between Key Stage 1 and Key Stage 2 | 87% | 85% | 87% | 85% (P) | Green | ↑ |
| NI 94 | Progression by 2 levels in Maths between Key Stage 1 and Key Stage 2 | 82% | 84% | 82% | 84% (P) | Green | ↑ |
| NI 99 | Looked after children reaching level 4 in English at Key Stage 2 | 53.1% | 51.9% | 53.1% | 51.9% (P) | Green | n/a |
| NI 100 | Looked after children reaching level 4 in maths at Key Stage 2 | 56.3% | 55.6% | 56.3% | 55.6% (P) | Green | ↑ |
| NI 101 | Looked after children achieving 5 A*-C GCSEs (or equivalent) at Key Stage 4 (including English and maths) | 6.3% | 9.3% | 6.3% | 9.3% (P) | Over Performing | ↑ |

Attainment data for 2009/10 academic year is reported in the 2010/11 financial year. Provisional data for attainment indicators shows that although challenging DFE set targets have not been achieved for every indicator, the direction of travel is positive. Small numbers and cohort mobility of looked after children affect the indicators NI 99, 100 and 101.

Attainment indicators with no data at quarter 2

| PI No. | Title | 09/2010 Actual | 2010/2011 Actual | 2010/2011 Target |
|--------|--|----------------|------------------|------------------|
| NI 87 | Secondary school persistent absence rate | 4.5% | | 5.5% |

Local Indicators

| PI No. | Title | Yr End Target | Yr End Forecast | Quarter 2 Target | Quarter 2 Actual | On Target | Direction of Travel |
|------------|---|-------------------------|-----------------|------------------|------------------|-----------|---|
| LOCAL 1400 | Number of looked after children | 565 (Lower is Better) | In development | 565 | 647 (P) | Red |  |
| LOCAL 1701 | Number of reported incidents of anti-social behaviour | 13949 (Lower is Better) | 14518 | 6974.50 | 7259 (A) | Green |  |

Nationally the numbers of looked after children are increasing. Current trajectory indicates that the 2010/11 target for local indicator 1400 will not be met.

For local indicator 1701 the quarter 2 target was met. Although budget cuts and proposed government policy changes will impact on this indicator the current trajectory suggests that the year end target should be met.

Local Indicators with no data at quarter 2

| PI No. | Title | 09/2010 Actual | 2010/2011 Actual | 2010/2011 Target |
|-------------|--|----------------|------------------|------------------|
| LOCAL 1700a | Participation in and outcomes from youth work: Participation | 18% | | 22% |

In 2009/10 significant changes in the Youth Service including a restructure impacted on participation and the year end figure did not achieve the target set. Although the new youth hub structure is now in place, reduced budget proposals including 2010/11 in-year cuts to youth grants will impact significantly on this indicator.

Data source: PIMS Report, 22 October 2010

4.0 Additional Detail of Reward Indicators

Further detail regarding reward indicators that have data at quarter 2 and indicators that are red or amber are included in appendix 1.

5.0 Recommendations:

That Wirral Children's Trust Board note the report.

Report Author:

Simon Douglas
PO Performance and Assessment

Contact:

Phone: 666 4412
Email: simondouglas@wirral.gov.uk

Appendices:

Appendix 1 Local Area Agreement 2010/11 Quarter 2 Position

Appendix 1

2010/11

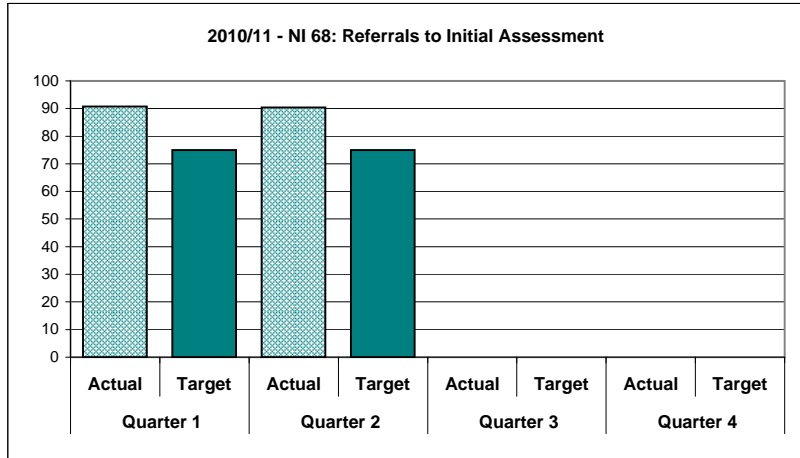
Quarter 2: July - September

Wirral Children's Trust - Local Area Agreement Report 2009/10

| | |
|---------------------------------|---|
| LAA Improvement Priority | Safely Reducing the Number of Children Looked After |
| Performance Indicator | NI 68: Referrals to Initial Assessment ▼ |
| Sponsor | Howard Cooper |
| Lead Organisation | Children's Social Care |
| Service Area | Children and Young People's Department |

| |
|---|
| Context |
| There has been an improved understanding of the threshold for referrals going on to assessment across the multi-agency partnership. |

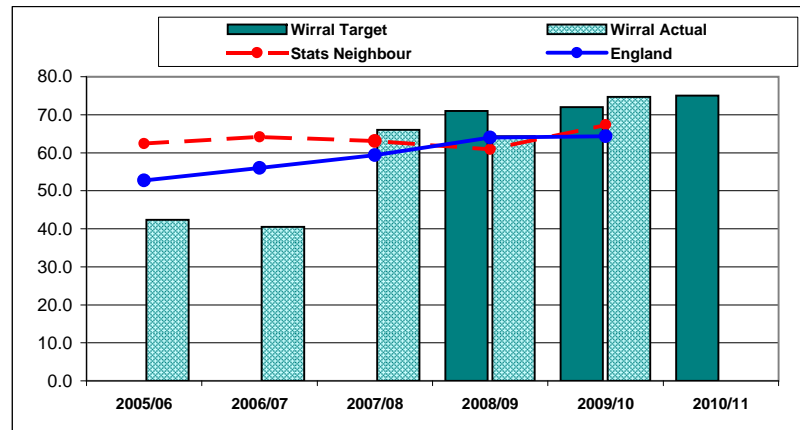
| | | | | | | | |
|----------------------------------|---------------|------------------|---------------|------------------|---------------|------------------|---------------|
| Improvement Direction: Up | | | | | | | |
| Quarter 1 | | Quarter 2 | | Quarter 3 | | Quarter 4 | |
| Actual | Target | Actual | Target | Actual | Target | Actual | Target |
| 90.7 | 75 | 90.4 | 75 | - | - | - | - |



Position Statement **RAG**

| | |
|----------------------|--------------|
| Quarter One | Green |
| Quarter Two | Green |
| Quarter Three | Green |
| Quarter Four | Green |

| | 2005/06 | 2006/07 | 2007/08 | 2008/09 | 2009/10 | 2010/11 |
|------------------------|---------|---------|---------|---------|---------|---------|
| Wirral Target | - | - | - | 71.0 | 72.0 | 75.0 |
| Wirral Actual | 42.4 | 40.5 | 66.0 | 64.3 | 74.7 | |
| Stats Neighbour | 62.4 | 64.1 | 63.1 | 60.9 | 67.4 | |
| England | 52.7 | 56.0 | 59.4 | 64.0 | 64.3 | |

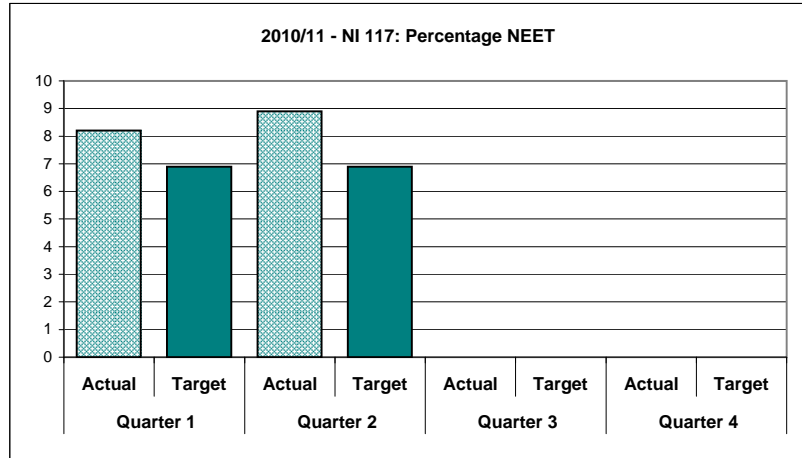


Wirral Children's Trust - Local Area Agreement Report 2009/10

| | |
|---------------------------------|--|
| LAA Improvement Priority | Reduction in the numbers of NEETs |
| Performance Indicator | NI 117: Percentage NEET |
| Sponsor | Sheila Lynch |
| Lead Organisation | Connexions |
| Service Area | Children and Young People's Department |

| |
|---|
| Context |
| Quarter 2 performance is an improvement when compared with the same period in 2009/10 which highlights the ongoing trend in the reduction of this indicator year on year. However there are many challenges ahead to achieving the target of 6.9% therefore a revised year end forecast of 8% has been set. |

| | | | | | | | |
|----------------------------------|---------------|------------------|---------------|------------------|---------------|------------------|---------------|
| Improvement Direction: Up | | | | | | | |
| Quarter 1 | | Quarter 2 | | Quarter 3 | | Quarter 4 | |
| Actual | Target | Actual | Target | Actual | Target | Actual | Target |
| 8.2 | 6.9 | 8.9 | 6.9 | - | - | - | - |



Position Statement **RAG**

Quarter One **Red**

A range of initiatives through the Tiger Group are on going. Connexions and Jobcentre Plus advisers are working together to support 18 year olds into an opportunity that best meets their needs.

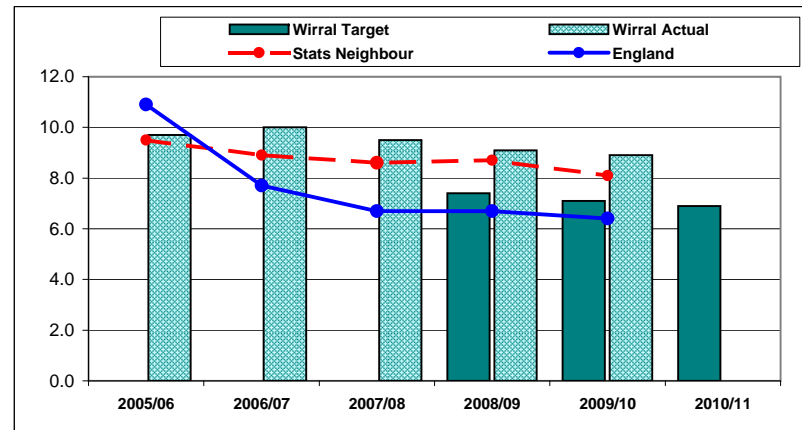
Quarter Two **Red**

There is targeting of intervention and support via the NEET TIGER Team and Connexions tracking. Discussions are taking place within the 14-19 Strategic Partnership and with providers to ensure that 'offer' in Wirral is flexible in its responses. Forensic analysis of the NEET group is taking place to inform targeted intervention across the partnership.

Quarter Three **Red**

Quarter Four **Red**

| | 2005/06 | 2006/07 | 2007/08 | 2008/09 | 2009/10 | 2010/11 |
|------------------------|---------|---------|---------|---------|---------|---------|
| Wirral Target | - | - | - | 7.4 | 7.1 | 6.9 |
| Wirral Actual | 9.7 | 10.0 | 9.5 | 9.1 | 8.9 | |
| Stats Neighbour | 9.5 | 8.9 | 8.6 | 8.7 | 8.1 | |
| England | 10.9 | 7.7 | 6.7 | 6.7 | 6.4 | |

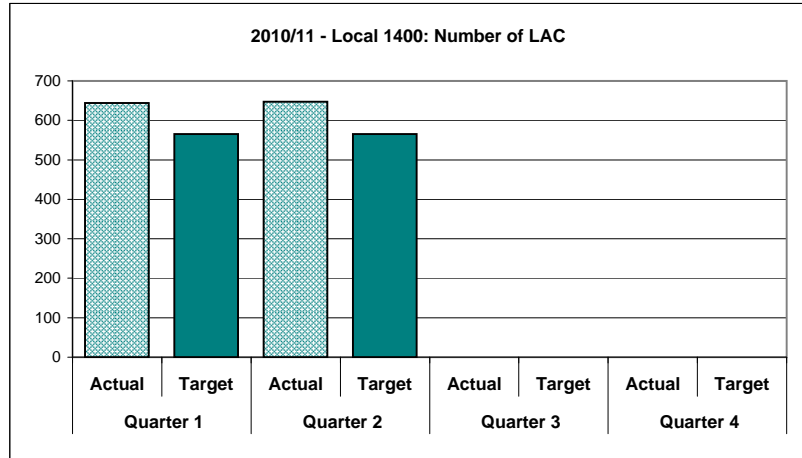


Wirral Children's Trust - Local Area Agreement Report 2009/10

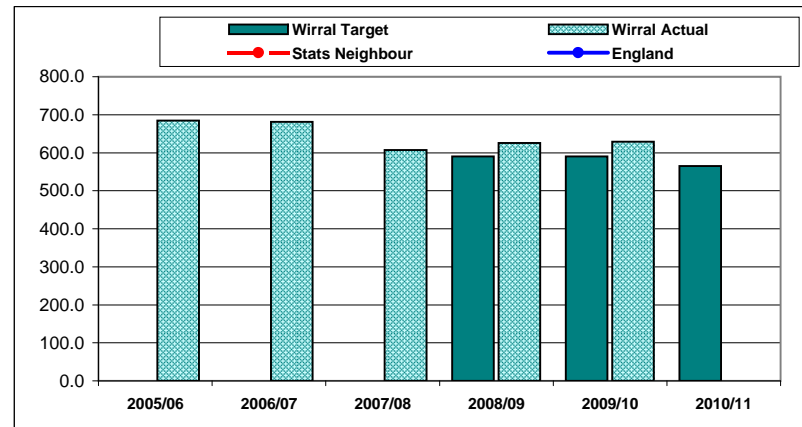
| | |
|---------------------------------|---|
| LAA Improvement Priority | Safely Reducing the Number of Children Looked After |
| Performance Indicator | Local 1400: Number of LAC |
| Sponsor | Julia Hassall |
| Lead Organisation | Children's Social Care |
| Service Area | Children and Young People's Department |

| |
|--|
| Context |
| The increase in children becoming looked after is a national trend, reported in the most recent Association of Director of Children's Services survey. |

| Improvement Direction: Down | | | | | | | |
|------------------------------------|--------|-----------|--------|-----------|--------|-----------|--------|
| Quarter 1 | | Quarter 2 | | Quarter 3 | | Quarter 4 | |
| Actual | Target | Actual | Target | Actual | Target | Actual | Target |
| 644 | 565 | 647 | 565 | - | - | - | - |



| | 2005/06 | 2006/07 | 2007/08 | 2008/09 | 2009/10 | 2010/11 |
|------------------------|---------|---------|---------|---------|---------|---------|
| Wirral Target | - | - | - | 590.0 | 590.0 | 565.0 |
| Wirral Actual | 685.0 | 681.0 | 607.0 | 626.0 | 629.0 | |
| Stats Neighbour | - | - | - | - | - | |
| England | - | - | - | - | - | |



Position Statement RAG

Quarter One Red

Specific action to reduce the trajectory includes focused preventative activity; specifically multi-systemic therapy, increased family group conferencing capacity and refocusing the work of the Adolescent Crisis Team. The focus on improving permanence planning for children who cannot return home is strengthened by the recruitment to new management posts in the revised Social Care Branch structure.

Quarter Two Red

A thorough profiling of the Looked After Children population is to take place to enable more targeted interventions. The refreshed Looked After Children Review project submitted to the strategic change program will also impact on this indicator.

Quarter Three Red

Quarter Four Red