

WIRRAL CHILDREN'S TRUST BOARD – MARCH 2011

LOCAL AREA AGREEMENT 2010/11 - QUARTER 3

1.0 Background

Wirral's Local Area Agreement (LAA) is monitored by the Local Strategic Partnership (LSP). Wirral Children's Trust represents the Children's Block of the LSP and is responsible for the delivery of LAA targets related to children and young people. Quarterly reports related to the LAA targets are presented to the Board for scrutiny. This report provides an update on progress towards targets, in addition information is provided to supply context to the indicators and to highlight any issues with reporting.

2.0 Reporting at Quarter 3

The Secretary of State for Communities and Local Government wrote to Councils on 13 October 2010 to inform them that under section 109 of the Local Government and Public Involvement in Health act 2007, all designations of local improvement targets in the Local Area Agreement have been revoked with immediate effect. In addition, as part of the budget deficit reduction there will be no payments made for Performance Reward Grants against the 2008-11 LAA targets. As a result of these national changes the Council is now reviewing the indicators in the LAA and the targets set.

At quarter 3 there is limited data available and all of the Key Stage data is still provisional. For reporting purposes the LAA indicators can be separated into three groups:

1. Former reward indicators
2. Attainment indicators
3. Local indicators

3.0 Reporting

Former Reward Indicators

PI No.	Title	Yr End Target	Yr End Forecast	Quarter 3 Target	Quarter 3 Actual	On Target	Direction of Travel
NI 68	Percentage of referrals to children's social care going on to initial assessment	75%	90%	75%	94.1% (P)	Over Performing	↑
NI 117	16 to 18 year olds who are not in education, employment or training (NEET)	6.9% (Lower is Better)	8.0%	6.9%	8.2% (P)	Red	↑

For NI 68 significant improved performance in 2009/10 has been maintained in quarter 3. Current trajectory analysis indicates that the year end target will be exceeded. For NI 117 although there has been sustained improvement the current economic climate impacts heavily on this indicator. Continuing intervention work is underway and the direction of travel is improving however economic uncertainty makes achieving the 2010/11 target unlikely. A revised forecast of 8% has been set.

Former reward indicators with no data at quarter 3

PI No.	Title	08/2009 Actual	09/2010 Actual	2010/2011 Actual	2010/2011 Target
NI 55	Obesity in primary school age children in Reception (lower is better)	9.57%	9.30%		9.50%
NI 111	First time entrants into the YJS aged 10 – 17 (lower is better)	1578	N/A		1500
NI 112	Percentage reduction in the under 18 conception rate	-6.3%	-21%		-39%

NI 55 is determined by an annual measurement programme. Wirral did achieve the 2010/11 target in 2009/10 however the expectation is for obesity to increase and the target set is to reduce this increase.

Data from the Youth Justice Board for NI 111 is not yet available. The impact of partnership intervention programmes particularly police involvement in restorative justice indicates that improvement on the 2008/09 figure will be possible.

For NI 112 although significant improvement was achieved in 2009/10 and intervention programmes are in place the 2010/11 year end target remains extremely challenging.

Provisional attainment indicators for 2009/10 academic year (2010/11 Financial Year)



PI No.	Title	Yr End Target	Yr End Forecast	Quarter 3 Target	Quarter 3 Actual	On Target	Direction of Travel
NI 72	Achievement of at least 78 points across the Early Years Foundation Stage with at least 6 in each of the scales in Personal Social and Emotional Development and Communication, Language and Literacy	57%	58%	57%	58% (A)	Green	↑
NI 73	Achievement at level 4 or above in both English and Maths at Key Stage 2	78%	75%	78%	75% (A)	Green	↔
NI 75	Achievement of 5 or more A*- C grades at GCSE or equivalent including English and Maths	57.0%	57.4%	57.0%	58.7% (A)	Green	↑
NI 92	Narrowing the gap between the lowest achieving 20% in the Early Years Foundation Stage Profile and the rest	28.6% (Lower is Better)	27.9%	28.6%	27.6% (A)	Green	↑
NI 93	Progression by 2 levels in English between Key Stage 1 and Key Stage 2	87%	85%	87%	86% (A)	Green	↑
NI 94	Progression by 2 levels in Maths between Key Stage 1 and Key Stage 2	82%	84%	82%	85% (A)	Green	↑
NI 99	Looked after children reaching level 4 in English at Key Stage 2	53.1%	51.9%	53.1%	51.9% (P)	Green	n/a
NI 100	Looked after children reaching level 4 in maths at Key Stage 2	56.3%	55.6%	56.3%	55.6% (P)	Green	↑
NI 101	Looked after children achieving 5 A*-C GCSEs (or equivalent) at Key Stage 4 (including English and maths)	6.3%	7.4%	6.3%	7.4% (P)	Over Performing	↔

Attainment data for 2009/10 academic year is reported in the 2010/11 financial year. Provisional data for attainment indicators shows that although challenging DFE set targets have not been achieved for every indicator, the direction of travel is positive. Small numbers and cohort mobility of looked after children affect the indicators NI 99, 100 and 101.

Attainment indicators with no data at quarter 3

PI No.	Title	09/2010 Actual	2010/2011 Actual	2010/2011 Target
NI 87	Secondary school persistent absence rate	4.5%		5.5%

Local Indicators

PI No.	Title	Yr End Target	Yr End Forecast	Quarter 3 Target	Quarter 3 Actual	On Target	Direction of Travel
LOCAL 1400	Number of looked after children	565 (Lower is Better)	655	565	668 (P)	Red	
LOCAL 1701	Number of reported incidents of anti-social behaviour	13949 (Lower is Better)	13417.33	10461.75	10063 (A)	Green	

Nationally the numbers of looked after children are increasing. Current trajectory indicates that the 2010/11 target for local indicator 1400 will not be met.

For local indicator 1701 the quarter 3 target was met. Although budget cuts and proposed government policy changes will impact on this indicator the current trajectory suggests that the year end target should be met.

Local Indicators with no data at quarter 3

PI No.	Title	09/2010 Actual	2010/2011 Actual	2010/2011 Target
LOCAL 1700a	Participation in and outcomes from youth work: Participation	18%		22%

In 2009/10 significant changes in the Youth Service including a restructure impacted on participation and the year end figure did not achieve the target set. Although the new youth hub structure is now in place, reduced budget proposals including 2010/11 in-year cuts to youth grants will impact significantly on this indicator.

Data source: PIMS Report, 2 February 2011

4.0 Additional Detail of Reward Indicators

Further detail regarding reward indicators that have data at quarter 3 and indicators that are red or amber are included in appendix 1.

5.0 Recommendations:

That Wirral Children's Trust Board note the report.

Report Author:

Simon Douglas
PO Performance and Assessment

Contact:

Phone: 666 4412
Email: simondouglas@wirral.gov.uk

Appendices:

Appendix 1 Local Area Agreement 2010/11 Quarter 3 Position

Appendix 1

2010/11

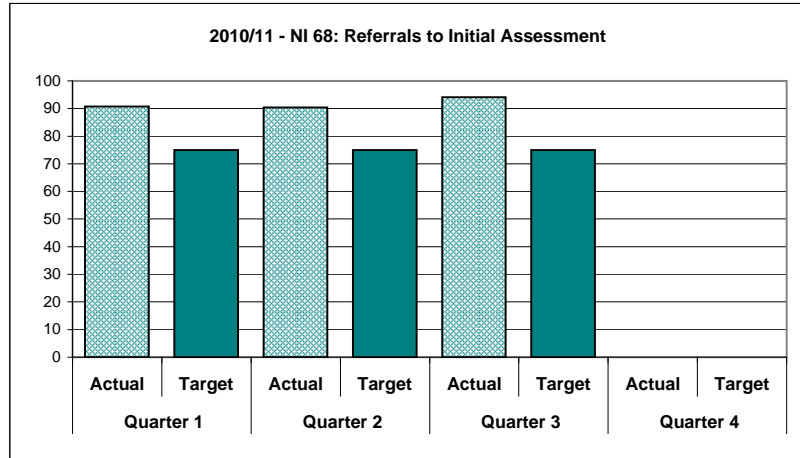
Quarter 3: October - December

Wirral Children's Trust - Local Area Agreement Report

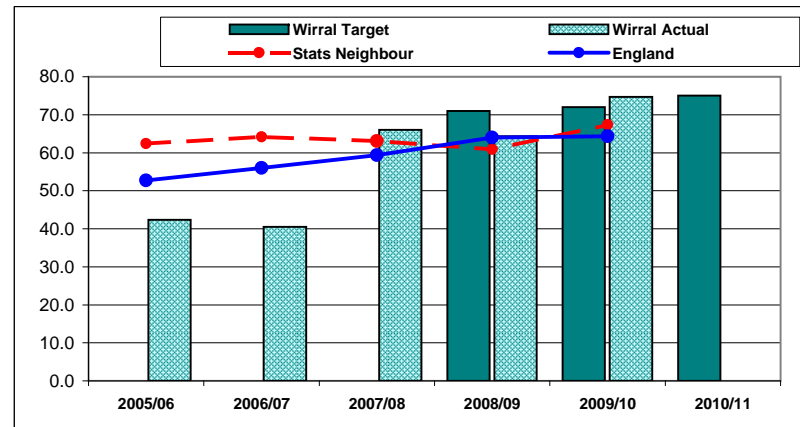
LAA Improvement Priority	Safely Reducing the Number of Children Looked After
Performance Indicator	NI 68: Referrals to Initial Assessment ▼
Sponsor	Howard Cooper
Lead Organisation	Children's Social Care
Service Area	Children and Young People's Department

Context	
There has been an improved understanding of the threshold for referrals going on to assessment across the multi-agency partnership.	

Improvement Direction: Up							
Quarter 1		Quarter 2		Quarter 3		Quarter 4	
Actual	Target	Actual	Target	Actual	Target	Actual	Target
90.7	75	90.4	75	94.1	75	-	-



	2005/06	2006/07	2007/08	2008/09	2009/10	2010/11
Wirral Target	-	-	-	71.0	72.0	75.0
Wirral Actual	42.4	40.5	66.0	64.3	74.7	
Stats Neighbour	62.4	64.1	63.1	60.9	67.4	
England	52.7	56.0	59.4	64.0	64.3	



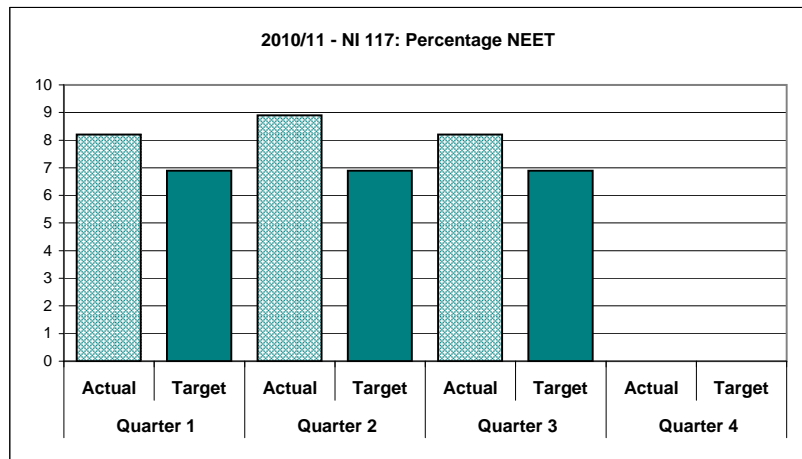
Position Statement		RAG
Quarter One		Green
Quarter Two		Green
Quarter Three		Green
Quarter Four		Green

Wirral Children's Trust - Local Area Agreement Report

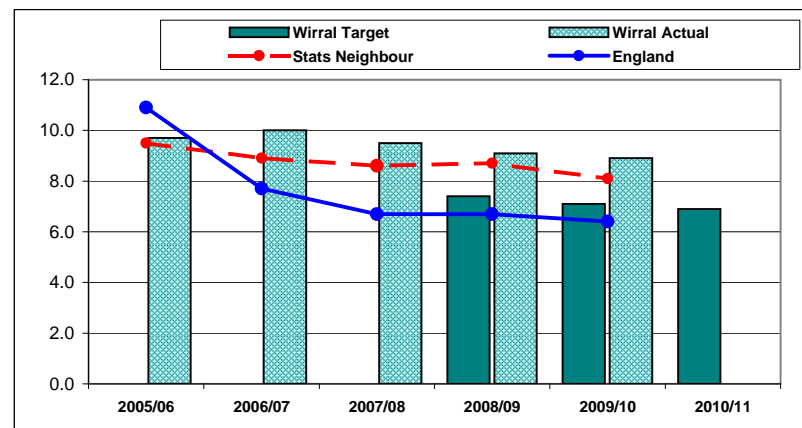
LAA Improvement Priority	Reduction in the numbers of NEETs
Performance Indicator	NI 117: Percentage NEET
Sponsor	Sheila Lynch
Lead Organisation	Connexions
Service Area	Children and Young People's Department

Context
There are a number of innovative programmes being commissioned via European Social Funds which focus specifically on the differing needs of the NEET cohort in order to provide an enhanced bespoke, targeted offer. The 14-19 Strategic Partnership with providers is ensuring that 'offer' in Wirral is flexible in its responses. Analysis of the NEET group has also taken place to inform targeted intervention across the partnership. There is an ongoing trend in the reduction of this indicator year on year, but there are many challenges ahead to achieving the target of 6.9% therefore a revised year end forecast of 8% has been set.

Improvement Direction: Up							
Quarter 1		Quarter 2		Quarter 3		Quarter 4	
Actual	Target	Actual	Target	Actual	Target	Actual	Target
8.2	6.9	8.9	6.9	8.2	6.9	-	-



	2005/06	2006/07	2007/08	2008/09	2009/10	2010/11
Wirral Target	-	-	-	7.4	7.1	6.9
Wirral Actual	9.7	10.0	9.5	9.1	8.9	
Stats Neighbour	9.5	8.9	8.6	8.7	8.1	
England	10.9	7.7	6.7	6.7	6.4	



Position Statement RAG

Quarter One Red

A range of initiatives through the Tiger Group are on going. Connexions and Jobcentre Plus advisers are working together to support 18 year olds into an opportunity that best meets their needs.

Quarter Two Red

There is targeting of intervention and support via the NEET TIGER Team and Connexions tracking. Discussions are taking place within the 14-19 Strategic Partnership and with providers to ensure that 'offer' in Wirral is flexible in its responses. Forensic analysis of the NEET group is taking place to inform targeted intervention across the partnership.

Quarter Three Red

There are a number of innovative programmes being commissioned via European Social Funds which focus specifically on the differing needs of the NEET cohort in order to provide an enhanced bespoke, targeted offer. The 14-19 Strategic Partnership with providers is ensuring that 'offer' in Wirral is flexible in its responses. Analysis of the NEET group has also taken place to inform targeted intervention across the partnership. There is an ongoing trend in the reduction of this indicator year on year, but there are many challenges ahead to achieving the target of 6.9% therefore a revised year end forecast of 8% has been set.

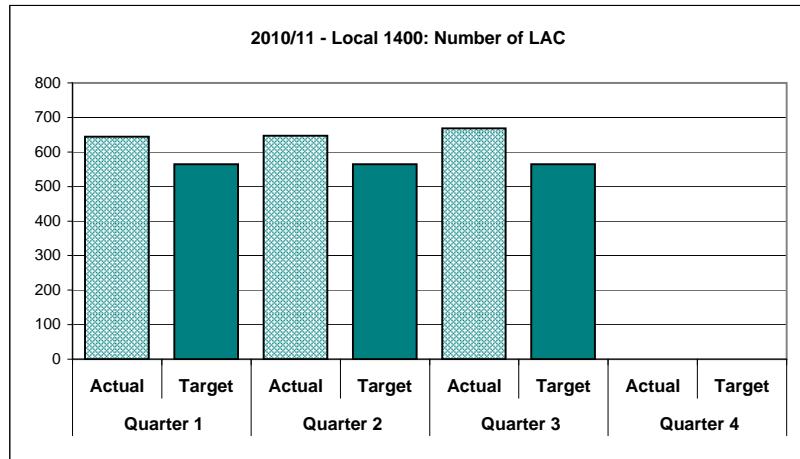
Quarter Four Red

Wirral Children's Trust - Local Area Agreement Report

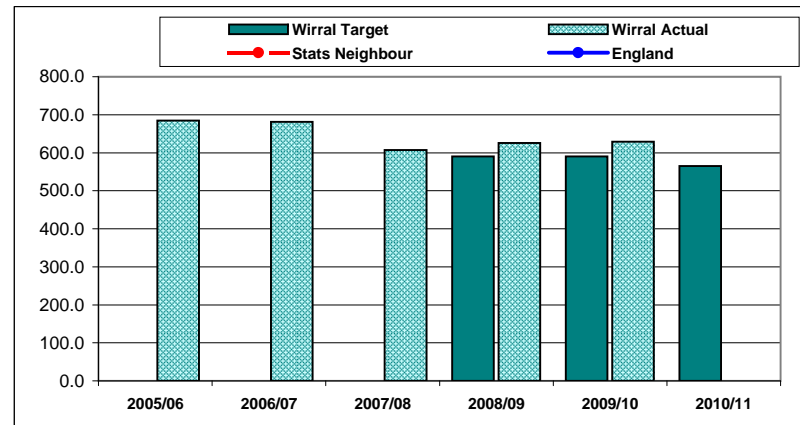
LAA Improvement Priority	Safely Reducing the Number of Children Looked After
Performance Indicator	Local 1400: Number of LAC
Sponsor	Julia Hassall
Lead Organisation	Children's Social Care
Service Area	Children and Young People's Department

Context	A thorough profiling of the Looked After Children population is taking place to enable more targeted interventions. A number of strategies, underpinned by the new Fieldwork structure, are available to ensure that children's plans do not drift, and that more children achieve permanence through Adoption, Special Guardianship or by returning home. Each District Team is tightly overseeing the plans for children to safely leave care; this is monitored by Senior Managers, and plans to overcome barriers to achieving this outcome are in place. The refreshed Looked After Children Review project submitted to the strategic change program will also impact on this indicator.
----------------	--

Improvement Direction: Down							
Quarter 1		Quarter 2		Quarter 3		Quarter 4	
Actual	Target	Actual	Target	Actual	Target	Actual	Target
644	565	647	565	668	565	-	-



	2005/06	2006/07	2007/08	2008/09	2009/10	2010/11
Wirral Target	-	-	-	590.0	590.0	565.0
Wirral Actual	685.0	681.0	607.0	626.0	629.0	
Stats Neighbour	-	-	-	-	-	
England	-	-	-	-	-	



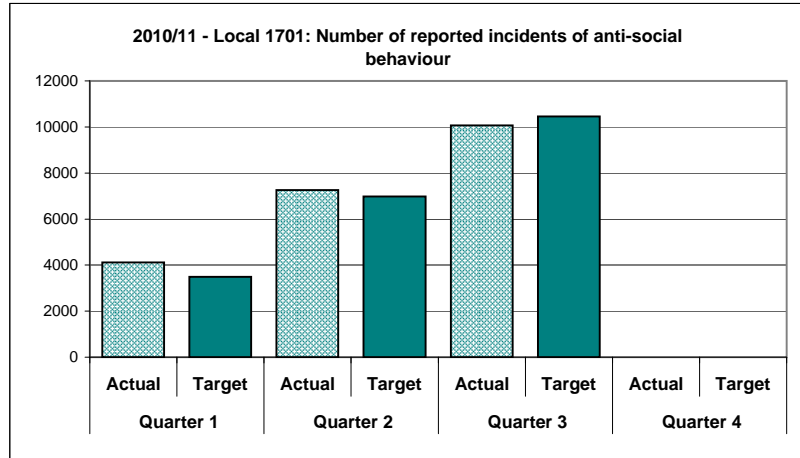
Position Statement	RAG
Quarter One	Red
Specific action to reduce the trajectory includes focused preventative activity; specifically multi-systemic therapy, increased family group conferencing capacity and refocusing the work of the Adolescent Crisis Team. The focus on improving permanence planning for children who cannot return home is strengthened by the recruitment to new management posts in the revised Social Care Branch structure.	
Quarter Two	Red
A thorough profiling of the Looked After Children population is to take place to enable more targeted interventions. The refreshed Looked After Children Review project submitted to the strategic change program will also impact on this indicator.	
Quarter Three	Red
A thorough profiling of the Looked After Children population is taking place to enable more targeted interventions. A number of strategies, underpinned by the new Fieldwork structure, are available to ensure that children's plans do not drift, and that more children achieve permanence through Adoption, Special Guardianship or by returning home. Each District Team is tightly overseeing the plans for children to safely leave care; this is monitored by Senior Managers, and plans to overcome barriers to achieving this outcome are in place. The refreshed Looked After Children Review project submitted to the strategic change program will also impact on this indicator.	
Quarter Four	Red

Wirral Children's Trust - Local Area Agreement Report

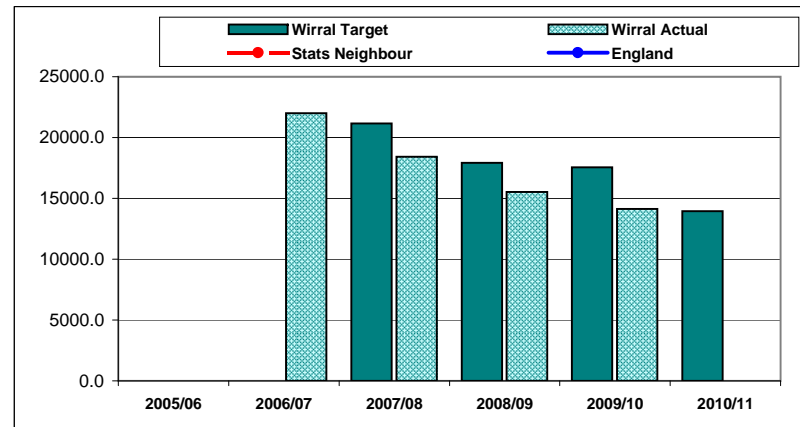
LAA Improvement Priority	Number of reported incidents of anti-social behaviour
Performance Indicator	Local 1701: Number of reported incidents of anti-social behaviour ▼
Sponsor	Steve McGilvray
Lead Organisation	Safer Communities
Service Area	Children and Young People's Department

Context
Performance against this indicator is better than for the same period in 2009/10 (4129.00 cumulative incidents) however the target is challenging when set against already significant reductions in incidents of anti-social behaviour (ASB). This is further complicated by a sustained period of warm dry weather.

Improvement Direction: Up							
Quarter 1		Quarter 2		Quarter 3		Quarter 4	
Actual	Target	Actual	Target	Actual	Target	Actual	Target
4122	3487.25	7259	6974.5	10063	10461.75	-	-



	2005/06	2006/07	2007/08	2008/09	2009/10	2010/11
Wirral Target	-	-	21152.0	17917.0	17558.0	13949.0
Wirral Actual	-	21994.0	18414.0	15524.0	14125.0	
Stats Neighbour	-	-	-	-	-	
England	-	-	-	-	-	



Position Statement	RAG
Quarter One	Green
In addition to normal governance and monitoring processes (as set out in the Community Safety Partnership's ASB Strategy 2009-2012), a weekly Police Governance Meeting is taking place, attended by the Council's ASB Manager, to review hot-spots of ASB and deploy resources accordingly. Officers within the ASB Team have also commenced ad hoc evening enforcement patrols in hot-spot locations (which is being done on a purely voluntary basis as the team has no spare capacity to off set this time from normal working hours.)	
Quarter Two	Green
Quarter Three	Green
Quarter Four	Green