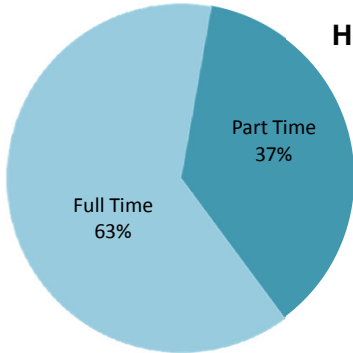
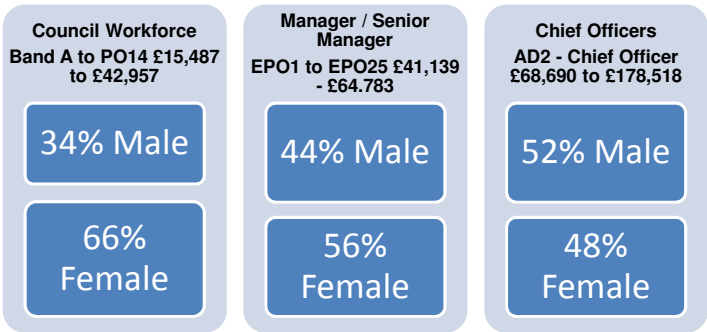


THIS IS WHO WE ARE

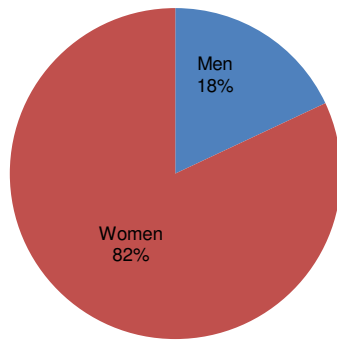


Council Workforce: 64% Females 36% Males

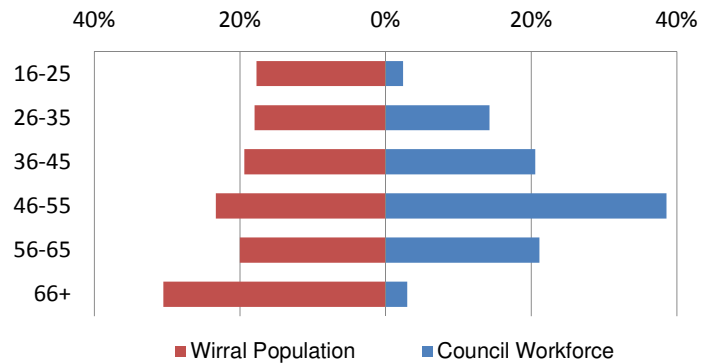
Wirral Population: 51% Females 49% Males



Hours



Age



Council Workforce

- BME 2.3%
- White 86.8%
- Unknown 10.8%

Wirral Population

- BME 4.0%
- White 94.7%
- Unknown 1.3%

Council Workforce

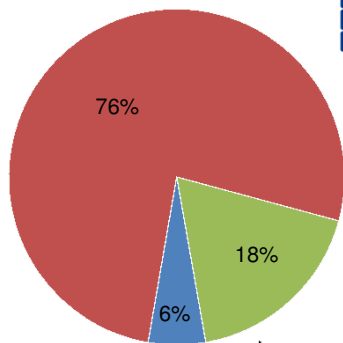
- Heterosexual 59.57%
- LGB 1.4%
- Unknown 38.68%

UK Population

- Heterosexual 93.7%
- LGB 1.7%
- Unknown 4.6%

The North West region has the second highest population rate in the country for people who identify as gay or lesbian and bisexual

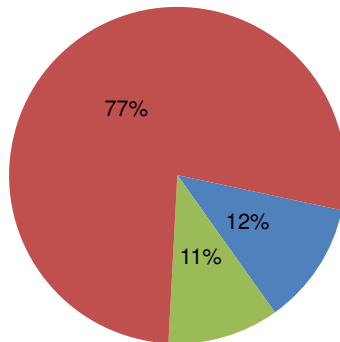
Council Workforce with a disability



■ Disability ■ No Disability ■ Unknown

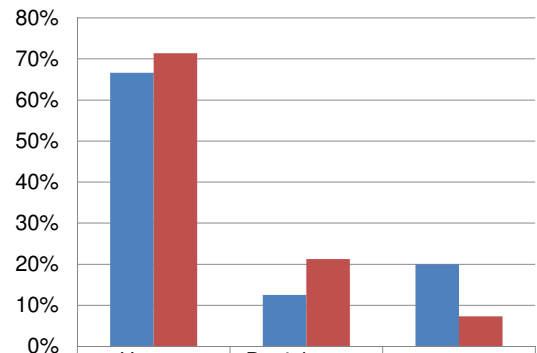
Wirral Population

(Based on long-term health problem or disability)



■ A lot ■ A Little ■ Not at All

Religion or Belief



Category	Council Workforce (%)	Wirral Population (%)
Have a Religion or Belief	67%	71%
Don't have a Religion or Belief	13%	21%
Unknown	20%	7%