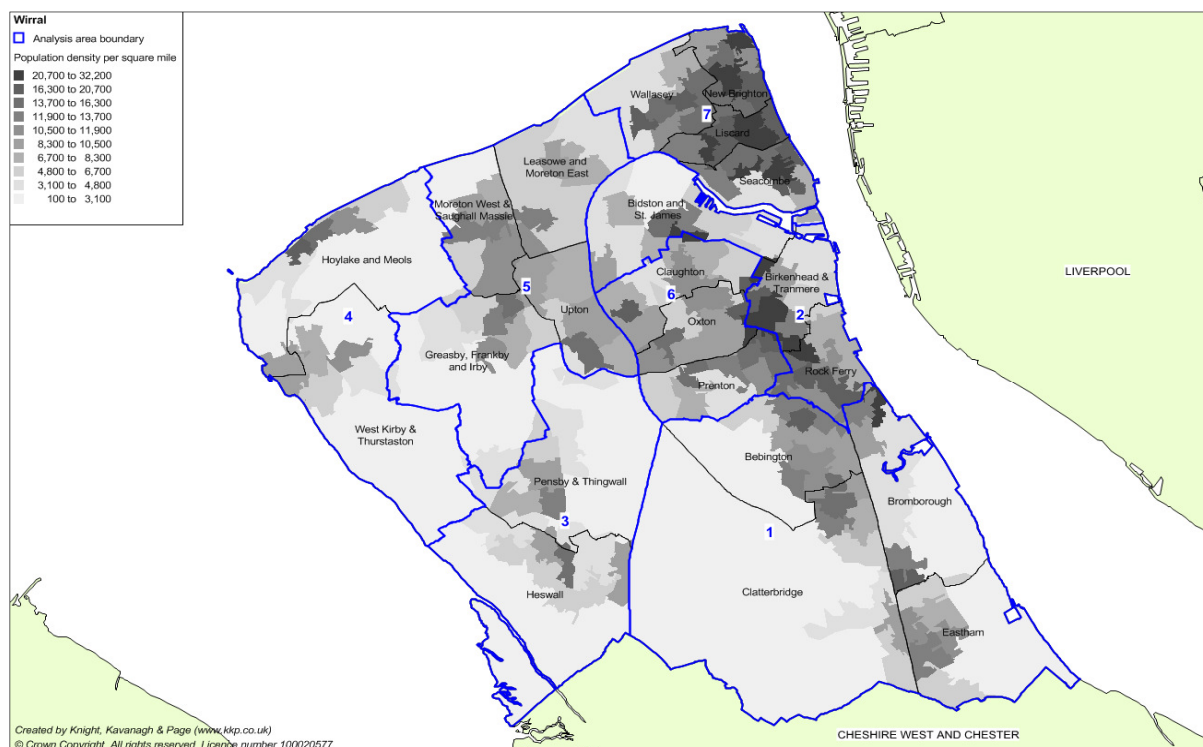


Appendix 1 – Map of Analysis Areas and Summary of Area Based Findings

Wirral Playing Pitch Strategy 2016

Analysis Area Map



Headline Findings

The table below highlights the quantitative headline shortfalls from the Wirral Playing Pitch Strategy Assessment Report (May 2016).

Analysis area	Current demand shortfall ¹	Future demand shortfall (2025) ²
Football		
1. Bebington; Bromborough; Clatterbridge; Eastham	No shortfall of adult match sessions No shortfall of youth match sessions No shortfall of mini match sessions	No shortfall of adult match sessions Shortfall of 8 youth match sessions Shortfall of 7.5 mini match sessions
2. Bidston and St James; Birkenhead and Tranmere; Rock Ferry	No shortfall of adult match sessions No shortfall of youth match sessions No shortfall of mini match sessions	No shortfall of adult match sessions No shortfall of youth match sessions No shortfall of mini match sessions
3. Pensby and Thingwall; Heswall	No shortfall of adult match sessions Shortfall of 4 youth match sessions No shortfall of mini match sessions	No shortfall of adult match sessions Shortfall of 6 youth match sessions Shortfall of 2 mini match sessions
4. Hoylake and Meols; West Kirby and Thurstaston	Shortfall of 18.5 adult match sessions Shortfall of 4 youth match sessions Shortfall of 6 mini match sessions	Shortfall of 18.5 adult match sessions Shortfall of 10 youth match sessions Shortfall of 17 mini match sessions
5. Greasby; Frankby and Irby; Moreton West and Saughall Massie; Leasowe and Moreton East; Upton	Shortfall of 4 adult match sessions No shortfall of youth match sessions No shortfall of mini match sessions	Shortfall of 4 adult match sessions No shortfall of youth match sessions Shortfall of 1.5 mini match sessions
6. Cloughton; Oxton; Prenton	No shortfall of adult match sessions No shortfall of youth match sessions Shortfall of 2 mini match sessions	No shortfall of adult match sessions Shortfall of 0.5 youth match sessions Shortfall of 7 mini match sessions

¹ Current demand is calculated from an analysis of overplay/latent/displaced demand against actual spare capacity (in the peak period) in match sessions.

² Please note that this is demand that will exist in 2025 if the current demand is not met based on population forecasts only.

Appendix 1 – Map of Analysis Areas and Summary of Area Based Findings

Wirral Playing Pitch Strategy 2016

Analysis area	Current demand shortfall ¹	Future demand shortfall (2025) ²
7. Liscard; New Brighton; Seacombe; Wallasey	Shortfall of 11 adult match sessions Shortfall of 7.5 youth match sessions Shortfall of 3.5 mini match sessions	Shortfall of 11 adult match sessions Shortfall of 14.5 youth match sessions Shortfall of 9.5 mini match sessions
Football (3G AGPs)³		
1. Bebington; Bromborough; Clatterbridge; Eastham	Shortfall of four AGPs	Shortfall of four AGPs
2. Bidston and St James; Birkenhead and Tranmere; Rock Ferry	No shortfall of AGPs	No shortfall of AGPs
3. Pensby and Thingwall; Heswall	No shortfall of AGPs	No shortfall of AGPs
4. Hoylake and Meols; West Kirby and Thurstaston	Shortfall of three AGPs	Shortfall of three AGPs
5. Greasby; Frankby and Irby; Moreton West and Saughall Massie; Leasowe and Moreton East; Upton	No shortfall of AGPs	No shortfall of AGPs
6. Claughton; Oxton; Prenton	Shortfall of one AGP	Shortfall of one AGP
7. Liscard; New Brighton; Seacombe; Wallasey	Shortfall of four AGPs	Shortfall of four AGPs
Cricket		
1. Bebington; Bromborough; Clatterbridge; Eastham	Demand is being met	Demand is being met
2. Bidston and St James; Birkenhead and Tranmere; Rock Ferry	Demand is being met	Demand is being met
3. Pensby and Thingwall; Heswall	Demand is being met	Demand is being met
4. Hoylake and Meols; West Kirby and Thurstaston	Demand is being met	Shortfall of one pitch
5. Greasby; Frankby and Irby; Moreton West and Saughall Massie; Leasowe and Moreton East; Upton	Shortfall of 0.5 pitches	Shortfall of 0.5 pitches
6. Claughton; Oxton; Prenton	Demand is being met	Shortfall of 0.3 pitches
7. Liscard; New Brighton; Seacombe; Wallasey	Demand is being met	Shortfall of 0.2 pitches
Rugby Union		
1. Bebington; Bromborough; Clatterbridge; Eastham	Shortfall of eight match sessions	Shortfall of 10.5 match sessions
2. Bidston and St James; Birkenhead and Tranmere; Rock Ferry	No shortfall of match sessions	No shortfall of match sessions
3. Pensby and Thingwall; Heswall	No shortfall of match sessions	No shortfall of match sessions
4. Hoylake and Meols; West Kirby and Thurstaston	Shortfall of nine match sessions	Shortfall of 10.5 match sessions
5. Greasby; Frankby and Irby; Moreton West and Saughall Massie; Leasowe and Moreton East; Upton	Shortfall of 13 match sessions	Shortfall of 17.5 match sessions

³ Based on accommodating 40 teams to one full size pitch for training. When assessing need on a Borough wide basis there is a shortfall of 11 full size 3G pitches to service training demand. This increases to 12 when calculated on an area by area basis.

Appendix 1 – Map of Analysis Areas and Summary of Area Based Findings

Wirral Playing Pitch Strategy 2016

Analysis area	Current demand shortfall ¹	Future demand shortfall (2025) ²
6. Claughton; Oxton; Prenton	Shortfall of 16 match sessions	Shortfall of 18 match sessions
7. Liscard; New Brighton; Seacombe; Wallasey	Shortfall of four match sessions	Shortfall of five match sessions
Hockey (Sand AGPs)		
1. Bebington; Bromborough; Clatterbridge; Eastham	Demand exists for increased access to AGPs	Increased access required and pitch/s will require resurface
2. Bidston and St James; Birkenhead and Tranmere; Rock Ferry	No local demand exists	No local demand exists
3. Pensby and Thingwall; Heswall	No local demand exists	No local demand exists
4. Hoylake and Meols; West Kirby and Thurstaston	Demand exists for increased access to AGPs	Increased access required and pitch/s will require resurface
5. Greasby; Frankby and Irby; Moreton West and Saughall Massie; Leasowe and Moreton East; Upton	No local demand exists	No local demand exists
6. Claughton; Oxton; Prenton	Demand is being met	Pitch/s will require resurface
7. Liscard; New Brighton; Seacombe; Wallasey	No local demand exists	No local demand exists
Tennis		
Wirral	Demand is being met	Qualitative improvements required
Bowls		
Wirral	Demand is being met	Demand is being met