

HEALTH AND WELLBEING BOARD**28 JULY 2022**

REPORT TITLE:	JOINT STRATEGIC NEEDS ASSESSMENT
REPORT OF:	DIRECTOR OF PUBLIC HEALTH

REPORT SUMMARY

This report updates the Board on the progress of Wirral's Joint Strategic Needs Assessment, and follows on from the Board's decision, at the meeting of 15th December 2021, to provide oversight for the Joint Strategic Needs Assessment and to ensure all partners are working collectively in Wirral, using the same intelligence to support joint decision making.

The report highlights the opportunity for the Board to support the refresh of the Wirral Joint Strategic Needs Assessment to ensure it aligns with the strategic priorities of the Board and its focus on reducing health inequalities in the borough. The report also outlines the need to establish a Wirral Joint Strategic Needs Assessment Steering Group to oversee this process on behalf of the Board.

This approach also supports delivery of the Wirral Plan. The Wirral Plan focuses on reducing inequalities across Wirral as we all work to recover from the pandemic, physically, emotionally, and financially.

This matter affects all wards within the borough; it is not a key decision.

RECOMMENDATION/S

The Health and Wellbeing Board is recommended to:

- (1) Note and support the ongoing development of the Wirral Joint Strategic Needs Assessment and website in line with the Wirral Health and Wellbeing Strategy priority areas
- (2) Support the establishment of a Joint Strategic Needs Assessment Steering Group to help set the strategic direction and provide oversight of Joint Strategic Needs Assessment development. All members of the Health and Wellbeing Board are requested to nominate a representative to be a member of the Group.

SUPPORTING INFORMATION

1.0 REASON/S FOR RECOMMENDATION/S

- 1.1 The Joint Strategic Needs Assessment underpins the work of the Health and Wellbeing Board and will shape the development and delivery of the Health and Wellbeing Strategy.
- 1.2 The aim of the Joint Strategic Needs Assessment Steering Group is to provide assurance to the Health and Wellbeing Board that partners are working collectively to develop an accurate picture of the health and wellbeing needs of local people. This partnership approach will ensure the Health and Wellbeing Board has the information it requires to enable and support joint decision making.
- 1.3 This approach also supports delivery of the Wirral Plan. The Wirral Plan focuses on reducing inequalities across Wirral as we all work to recover from the pandemic, physically, emotionally, and financially.

2.0 OTHER OPTIONS CONSIDERED

- 2.1 No other options were considered as the production of a Joint Strategic Needs Assessment is a statutory duty of the Health and Wellbeing Board.

3.0 BACKGROUND INFORMATION

- 3.1 Joint Strategic Needs Assessment is 'a process to identify the current and future health and wellbeing needs of a population in a local authority area'. It is a systematic review of the health and wellbeing needs of the local population, informing local priorities, policies, and strategies that in turn informs local commissioning and service planning to improve health and wellbeing outcomes and reduce inequalities throughout the borough.
- 3.2 The local system has a shared responsibility to prepare Joint Strategic Needs Assessments and a Health & Wellbeing Strategy, through the local Health and Wellbeing Board. There is no template or format that must be used and no mandatory data sets to be included, although they must be fit for purpose.
- 3.3 **Wirral Joint Strategic Needs Assessment development: Next steps**

The current Wirral Joint Strategic Needs Assessment has been built and added to over several years. We now have the opportunity for the Board to review and streamline the Joint Strategic Needs Assessment to ensure it aligns with the strategic priorities of the Board and its focus on reducing health inequalities. The drivers for this new approach are:

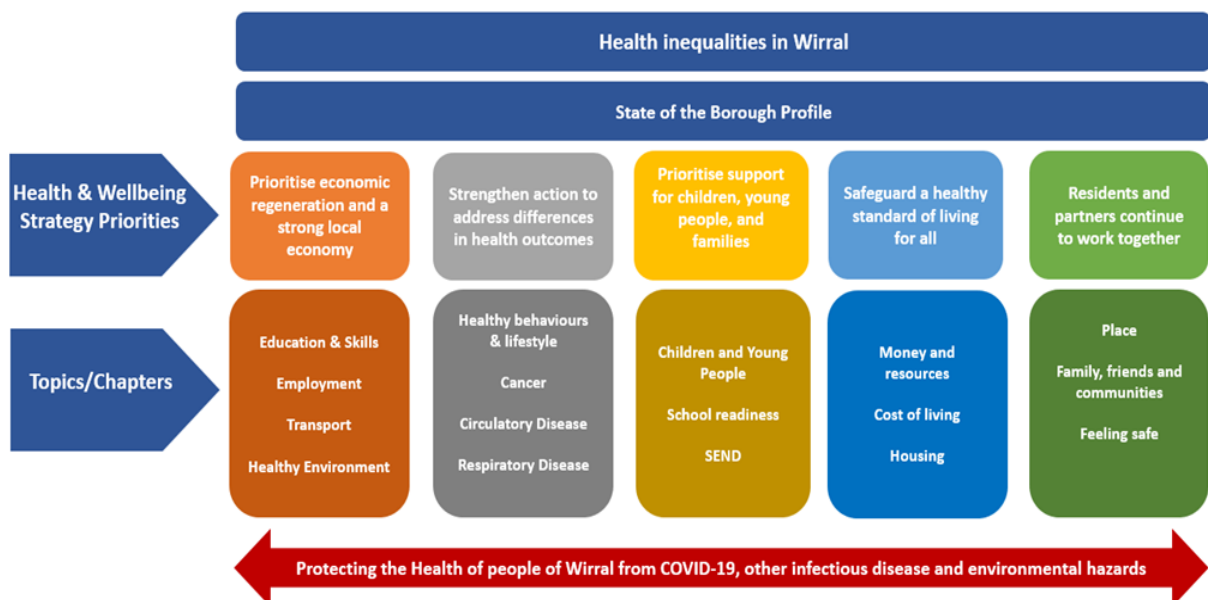
- Development of the Wirral Health and Wellbeing Strategy: The Director of Public Health is leading on collaboration and engagement across the Council, with

partner organisations and community representatives to inform the development of the Wirral Health and Wellbeing Strategy which will be published in September 2022. As part of this strategy development process five key priorities have emerged.

- **State of the Borough Profile:** Our developing State of the Borough profile will provide an overview of Wirral using the most current available data. The profile will be launched alongside the Public Health Annual report in September and aims to provide a better understanding of the borough, its population, and the key issues facing them.
- **Lessons learnt from COVID-19:** The COVID-19 pandemic exacerbated pre-existing health inequalities within the borough and highlighted the need for robust local approach to protect the population from COVID-19, other infectious disease, and environmental hazards.

3.4 Health and Wellbeing Board members are asked to support the development of a refreshed Wirral Joint Strategic Needs Assessment website. A framework of the refreshed approach is outlined in Figure 1. Each section will bring together quantitative intelligence (data that can be counted or measured in numerical values) alongside qualitative intelligence (written or spoken narratives). This will ensure that the voice of Wirral residents and communities is given equal weight and reflected within each section of the Joint Strategic Needs Assessment.

Figure 1: Joint Strategic Needs Assessment Refresh



3.5 Joint Strategic Needs Assessment Steering Group

To ensure the Wirral Joint Strategic Needs Assessment is fit for purpose, accurately reflects the needs of the local population, and provides an evidence base on which key strategies and commissioning plans can be built it is proposed we establish a Joint Strategic Needs Assessment Steering Group. The group will help set the strategic direction of the Joint Strategic Needs Assessment and other strategic analysis, identify priority knowledge gaps, and agree a clear work plan based on the needs of users and the priorities of Wirral Health and Wellbeing Board, Integrated Care Board, and other partners. Health and wellbeing Board members are asked to nominate a representative to be part of this Steering Group. To have a membership representing key local partners and agencies to lead and implement the process.

4.0 FINANCIAL IMPLICATIONS

- 4.1 There is likely to be a relatively small cost associated with the design and production of the refreshed Joint Strategic Needs Assessment website. These costs will be met from the Public Health grant.

5.0 LEGAL IMPLICATIONS

- 5.1 Under the Health and Social Care Act 2012 local Health and Wellbeing Boards have a statutory duty to produce a Joint Strategic Needs Assessment to underpin the Joint Health and Wellbeing Strategy that sets the strategic direction of the wider 'system'.

6.0 RESOURCE IMPLICATIONS: STAFFING, ICT AND ASSETS

- 6.1 The Council has invested in a Programme Manager who maintains the Joint Strategic Needs Assessment workplan and works with partner agencies to develop and deliver the Joint Strategic Needs Assessment. There are also intelligence officers who work collaboratively to produce content.
- 6.2 The Council also provides the website where the Joint Strategic Needs Assessment and tools and resources are maintained by the Programme Manager and available for all to access.
- 6.3 There is a need for commitment of officer time from partners within the Joint Strategic Needs Assessment Steering Group. There also needs to be continued commitment and membership at the Joint Strategic Needs Assessment Steering Group representing key agencies across Wirral to implement the process.

7.0 RELEVANT RISKS

- 7.1 The Joint Strategic Needs Assessment is a key part of the evidence base for development of a Health and Wellbeing Strategy. There is a risk that this will not be optimised if alignment of the Joint Strategic Needs Assessment with strategy development is not put in place by the board. There is a risk of failing to comply with the statutory duty to produce the Joint Strategic Needs Assessment.
- 7.2 Any risks related to the development of the Joint Strategic Needs Assessment will be identified and managed by the Joint Strategic Needs Assessment Steering Group and reported to the Health and Wellbeing Board.

8.0 ENGAGEMENT/CONSULTATION

8.1 No direct public consultation or engagement has been undertaken in relation to this report. A programme of engagement with local people on the development of a new Health and Wellbeing Strategy is in development and is being delivered in partnership with local community, voluntary and faith groups. The Wirral Joint Strategic Needs Assessment will ensure the voice of Wirral residents and communities is given equal weight to numerical data and is reflected within each section/ chapter.

9.0 EQUALITY IMPLICATIONS

9.1 There are no direct equality and diversity issues arising directly because of this report. However, the Joint Strategic Needs Assessment is the comprehensive assessment of the current and future health and social care needs of Wirral residents, with a focus on improving the health and wellbeing of the local community and to reduce inequalities. Any associated actions resulting from the Joint Strategic Needs Assessment may require an individual Equality Impact Assessment.

10.0 ENVIRONMENT AND CLIMATE IMPLICATIONS

10.1 There are no environment and climate implications arising from this report. However, the local environment is a key influence on health which will be captured within the Joint Strategic Needs Assessment.

11.0 COMMUNITY WEALTH IMPLICATIONS

11.1 The Joint Strategic Needs Assessment is a tool that directly impacts on local community development and resilience. The Joint Strategic Needs Assessment is a consolidation of local community data in one place, increasing ease of access and provides insight used by organisations and individuals to drive evidence-based decision making in the local area with a direct impact on health inequalities. This includes the voluntary, community and faith sector where Joint Strategic Needs Assessment insight is used to develop funding bids, bringing funding into the area to support local employment and local organisation and community resilience.

REPORT AUTHOR: **Julie Webster**
Director of Public Health
Wirral Council
Email: juliewebster@wirral.gov.uk

APPENDICES

BACKGROUND PAPERS

Current Wirral Joint Strategic Needs Assessment Website:
<https://www.wirralintelligenceservice.org/jsna/>

Health and Social Care Act 2012

SUBJECT HISTORY (last 3 years)

Council Meeting	Date
Health and Wellbeing Board Joint Strategic Needs Assessment Development	15 th December 2021