

1. EXECUTIVE SUMMARY

Edsential has fulfilled its mission as a Community Interest Company during this difficult year. We have constantly adapted to schools' needs and safety requirements to be the sustainable, high quality partner that schools could rely on during these challenging times.

2. BACKGROUND

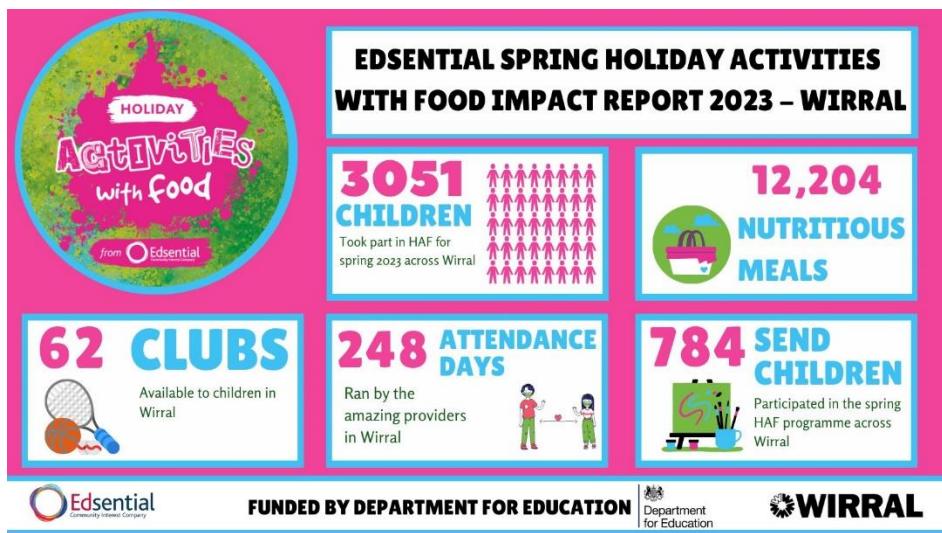
Holiday Activity and Food programme coordination 2022/23

Edsential continued to coordinate the HAF programme for Wirral:

Winter 22:



Spring 23



Summer 23



Service delivery highlights:

Young musicians take part in their first-ever live gig

Edsential's young musicians from 'New Noise' and members of Future Yard's 'Sound Check' training programme performed live music to a large audience on Saturday 2 April.

They have been working alongside each other over the past 11 weeks at the New Noise Music Centre in partnership with Future Yard, leading up to this spectacular day designed to showcase all the amazing work of the different bands.

The New Noise Junior project was created to support the next generation of music makers, offering a space for young people aged 14-16 to experiment across a range of instruments and music-making techniques – including guitar, bass, keyboards, drums, DJing and rapping – in sessions led by a team of hugely experienced and passionate tutors.

[Young musicians take part in their first-ever live gig - Edsential](#)

School Travel Awards: Best Residential Experience 2023

Conway Centres
For further information about any of our centres:
Visit: www.conwaycentres.co.uk
Email: conwaycentre@edsential.co.uk
Call: 01248 714501

Two night residential visit from just £129PP in Autumn 2023!

school travel AWARDS 2023 winner Best Residential Experience

On 6th June 2023, members of the Conway Centres team made their way to The Royal Lancaster Hotel in London for the awards ceremony where they were presented with the Best Residential Experience award by Olympian and broadcaster Katharine Merry.

Edsential's Conway Centres welcomes more than 20,000 children and young people every year for an adventure-filled residential at the four centres across Cheshire and North Wales.

See our new video of pupils experiencing arts and real adventurous activities: [Home - Conway Centres](#)

Inflation

We are continuing to experience significant pressure due to inflation in food, staff, energy and transport costs; pressures we appreciate our schools are also experiencing. We have taken difficult decisions to keep our cost increases as low as we can, but the opportunity to continue to do so will be reduced next year as most cost saving opportunities will have been exhausted. Next year, we are forecasting the National Living Wage to increase by 7-9%, food inflation to be 8-9% and general CPI at c.4%.

However, given we are a social enterprise that reinvests all income to improve our services, we will continue to keep any price increases as low as possible.

On behalf of our 1000 staff I would like to thank everyone who supported us during this year.

RECOMMENDATIONS

It is recommended that the report is noted.

lan.mcgrady@edsential.co.uk