

Budget 2025-26: Business Consultation Survey

This consultation was for stakeholders in the Wirral business community who were invited to contribute. 72 people answered the survey but some respondents may not have answered every question.

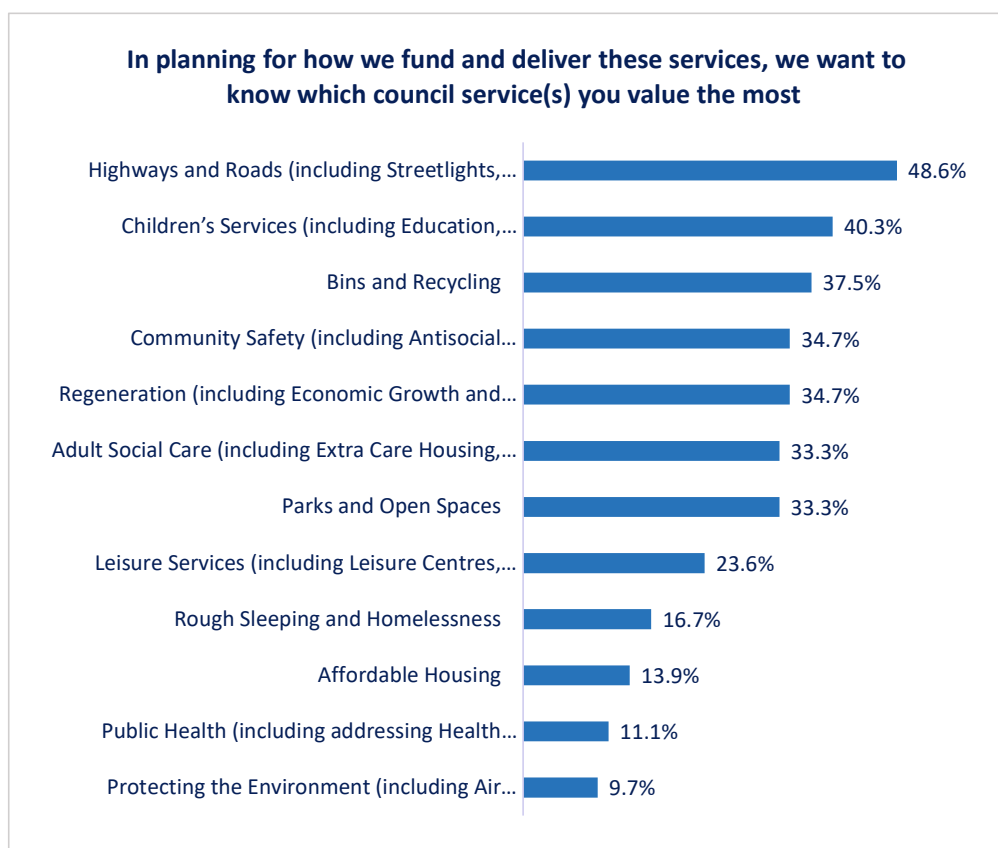
In Q1, respondents were asked to select up to 3 options. The percentages given reflect the percentage of respondents who selected the options. As they have selected more than one option, the total percentage exceeds 100%.

In Q2-Q7, businesses rated priorities on a scale from 1 to 5, where 1 signifies no importance and 5 indicates high importance. To analyse the data, each score's response count was multiplied by the score itself and then divided by the total responses for that question. This gives each priority a score, with higher numbers indicating greater importance. This method highlights the most important priorities according to collective input.

Question 1: In planning for how we fund and deliver these services, we want to know which council service(s) you value the most. 72 people responded to 'In planning for how we fund and deliver these services, we want to know which council service(s) you value the most.'

The services that respondents value the most were Highways and Roads (including Streetlights, Parking and Street Cleaning) (48.6%), Children's Services (including Education, Safeguarding, Early Help and SEND) (40.3%) and Bins and Recycling (37.5%).

In planning for how we fund and deliver these services, we want to know which council service(s) you value the most.	Total	%
Highways and Roads (including Streetlights, Parking and Street Cleaning)	35	48.6%
Children's Services (including Education, Safeguarding, Early Help and SEND)	29	40.3%
Bins and Recycling	27	37.5%
Community Safety (including Antisocial Behaviour)	25	34.7%
Regeneration (including Economic Growth and Job Creation)	25	34.7%
Adult Social Care (including Extra Care Housing, Safeguarding and Independent Living)	24	33.3%
Parks and Open Spaces	24	33.3%
Leisure Services (including Leisure Centres, Libraries, Museums and Golf Courses)	17	23.6%
Rough Sleeping and Homelessness	12	16.7%
Affordable Housing	10	13.9%
Public Health (including addressing Health Inequalities)	8	11.1%
Protecting the Environment (including Air Quality, Climate Emergency and Healthier)	7	9.7%
Total Respondents	72	

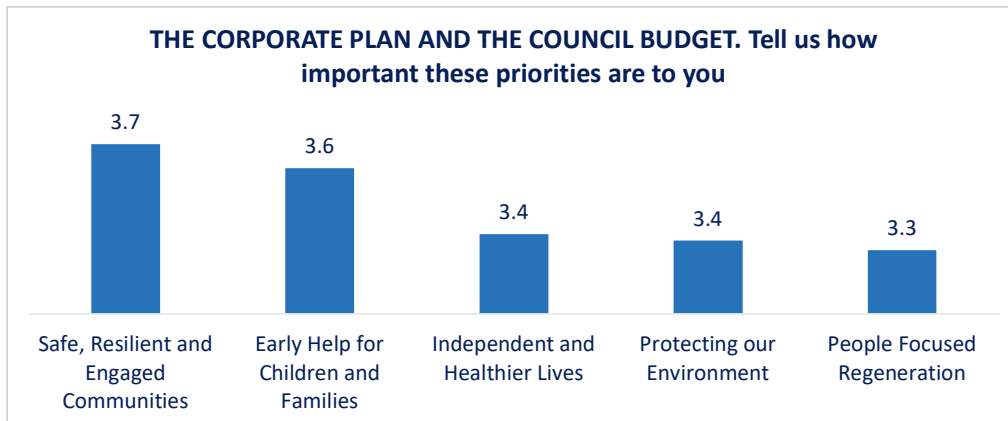


Question 2. THE CORPORATE PLAN AND THE COUNCIL BUDGET. Tell us how important these priorities are to you.

Between 70 and 72 people responded to the different options in the question 'THE CORPORATE PLAN AND THE COUNCIL BUDGET. Tell us how important these priorities are to you.'

The priorities that respondents said were the most important were Safe, Resilient and Engaged Communities (score of 3.7), Early Help for Children and Families (3.6) and Independent and Healthier Lives (3.4).

THE CORPORATE PLAN AND THE COUNCIL BUDGET. Tell us how important these priorities are to you.	Importance					Score
	1 = no importance, 5 = very important					
	1	2	3	4	5	
Safe, Resilient and Engaged Communities	4	12	11	20	25	3.7
Early Help for Children and Families	6	12	13	14	27	3.6
Independent and Healthier Lives	3	13	25	14	16	3.4
Protecting our Environment	8	14	12	17	19	3.4
People Focused Regeneration	7	15	16	14	19	3.3

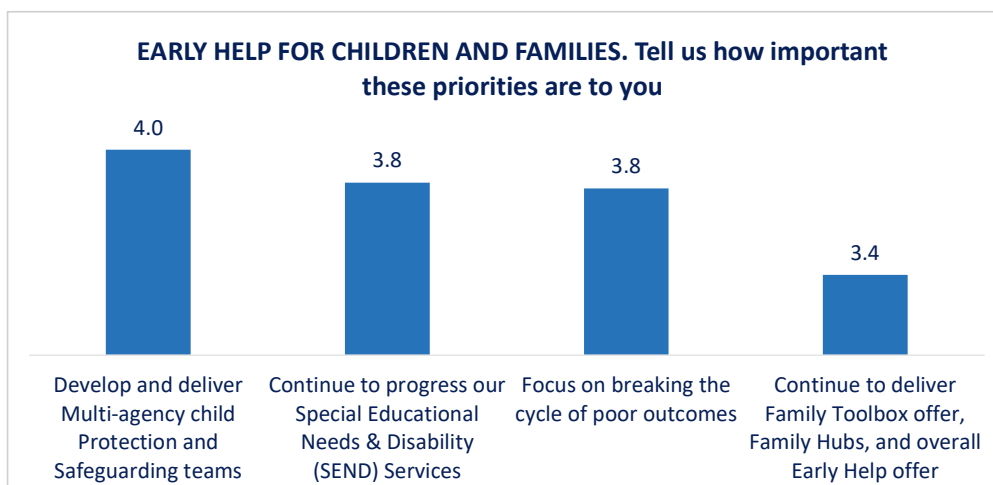


Question 3. EARLY HELP FOR CHILDREN AND FAMILIES. Tell us how important these priorities are to you.

Between 71 and 72 people responded to the different options in the question 'EARLY HELP FOR CHILDREN AND FAMILIES. Tell us how important these priorities are to you.'

The priorities that respondents said were the most important were Develop and deliver Multi-agency child Protection and Safeguarding teams (score of 4.0), Continue to progress our Special Educational Needs & Disability (SEND) Services (3.8) and Focus on breaking the cycle of poor outcomes (3.8).

EARLY HELP FOR CHILDREN AND FAMILIES. Tell us how important these priorities are to you.	Importance					Score
	1 = no importance, 5 = very important					
	1	2	3	4	5	
Develop and deliver Multi-agency child Protection and Safeguarding teams	5	3	13	19	31	4.0
Continue to progress our Special Educational Needs & Disability (SEND) Services	5	4	18	18	27	3.8
Focus on breaking the cycle of poor outcomes	5	6	16	18	27	3.8
Continue to deliver Family Toolbox offer, Family Hubs, and overall Early Help offer	6	11	25	10	20	3.4

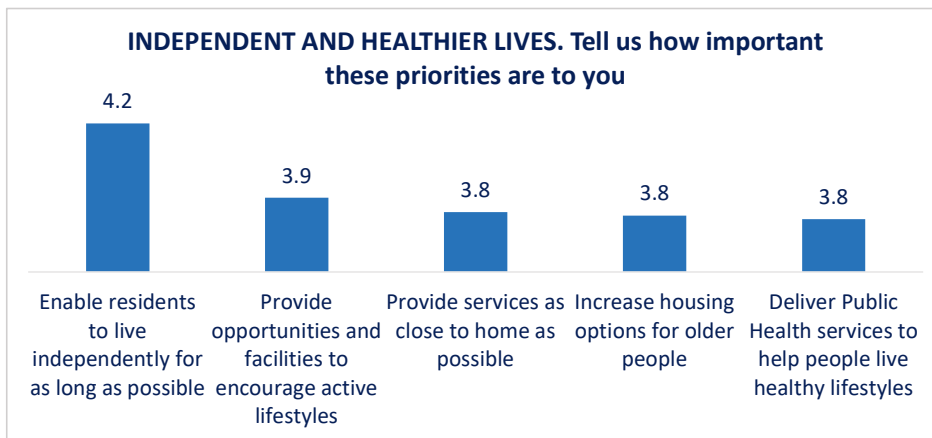


Question 4. INDEPENDENT AND HEALTHIER LIVES. Tell us how important these priorities are to you.

Between 70 and 71 people responded to the different options in the question 'INDEPENDENT AND HEALTHIER LIVES. Tell us how important these priorities are to you.'

The priorities that respondents said were the most important were Enable residents to live independently for as long as possible (score of 4.2), Provide opportunities and facilities to encourage active lifestyles (3.9) and Provide services as close to home as possible (3.8).

INDEPENDENT AND HEALTHIER LIVES. Tell us how important these priorities are to you.	Importance					Score
	1 = no importance, 5 = very important					
	1	2	3	4	5	
Enable residents to live independently for as long as possible	2	2	10	24	32	4.2
Provide opportunities and facilities to encourage active lifestyles	4	7	12	17	30	3.9
Provide services as close to home as possible	5	2	19	19	26	3.8
Increase housing options for older people	3	5	16	25	22	3.8
Deliver Public Health services to help people live healthy lifestyles	2	3	24	20	22	3.8

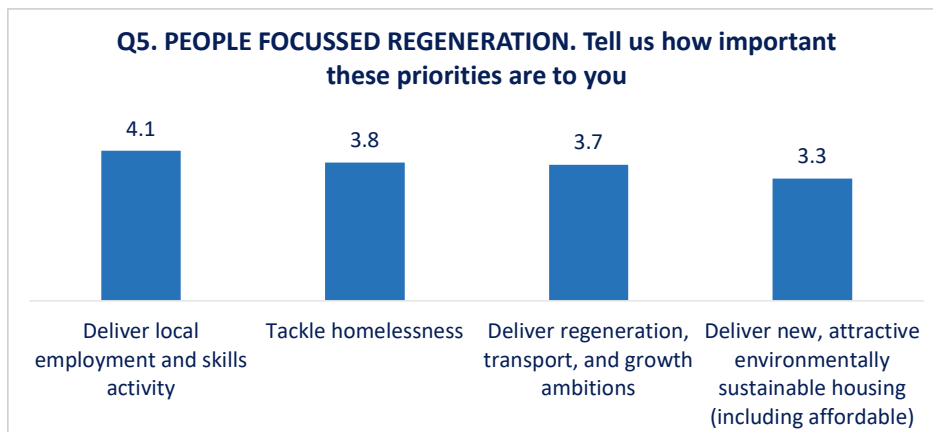


Question 5. PEOPLE FOCUSED REGENERATION. Tell us how important these priorities are to you.

72 people responded to 'PEOPLE FOCUSED REGENERATION. Tell us how important these priorities are to you.'

The priorities that respondents said were the most important were Deliver local employment and skills activity (score of 4.1), Tackle homelessness (3.8) and Deliver regeneration, transport, and growth ambitions (3.7).

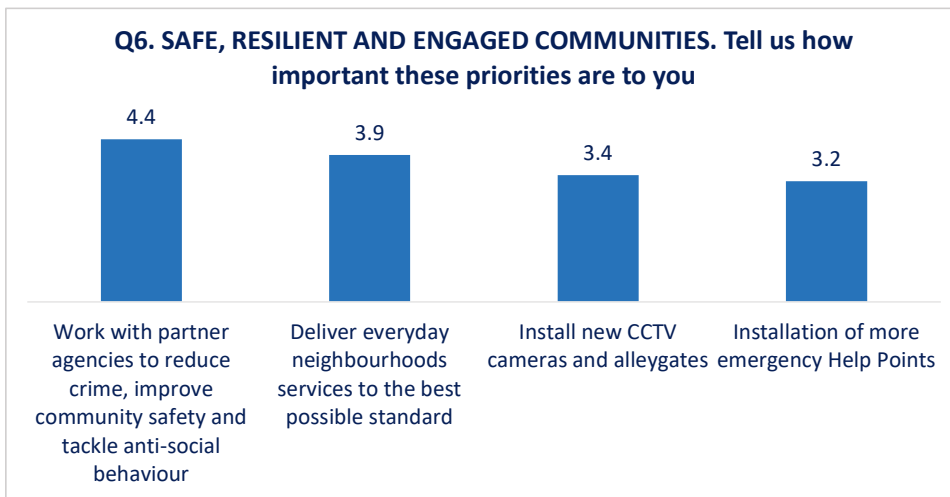
PEOPLE FOCUSED REGENERATION. Tell us how important these priorities are to you.	Importance					Score
	1 = no importance, 5 = very important					
	1	2	3	4	5	
Deliver local employment and skills activity	3	4	10	23	32	4.1
Tackle homelessness	5	4	18	22	23	3.8
Deliver regeneration, transport, and growth ambitions	4	9	16	19	24	3.7
Deliver new, attractive environmentally sustainable housing (including affordable)	6	13	14	30	9	3.3



Question 6. SAFE, RESILIENT AND ENGAGED COMMUNITIES. Tell us how important these priorities are to you.

72 people responded to 'SAFE, RESILIENT AND ENGAGED COMMUNITIES. Tell us how important these priorities are to you.' The priorities that respondents said were the most important were Work with partner agencies to reduce crime, improve community safety and tackle anti-social behaviour (score of 4.4), Deliver everyday neighbourhoods services to the best possible standard (3.9) and Install new CCTV cameras and alleygates (3.4).

SAFE, RESILIENT AND ENGAGED COMMUNITIES. Tell us how important these priorities are to you.	Importance					Score
	1 = no importance, 5 = very important					
	1	2	3	4	5	
Work with partner agencies to reduce crime, improve community safety and tackle anti-social behaviour	1	2	9	18	42	4.4
Deliver everyday neighbourhoods services to the best possible standard	3	4	12	28	25	3.9
Install new CCTV cameras and alleygates	9	11	14	18	20	3.4
Installation of more emergency Help Points	7	12	21	21	11	3.2



Question 7. PROTECTING OUR ENVIRONMENT. Tell us how important these priorities are to you.

Between 71 and 72 people responded to the different options in the question 'PROTECTING OUR ENVIRONMENT. Tell us how important these priorities are to you.'

The priorities that respondents said were the most important were Keep working to improve street cleanliness (score of 3.9), Protection of our local environment (3.5) and Support increased use of active travel networks (3.2).

PROTECTING OUR ENVIRONMENT. Tell us how important these priorities are to you.	Importance					Score
	1 = no importance, 5 = very important					
	1	2	3	4	5	
Keep working to improve street cleanliness	4	3	14	24	26	3.9
Protection of our local environment	9	9	11	23	20	3.5
Support increased use of active travel networks	12	9	18	20	13	3.2
Continue to respond to the climate change emergency	18	10	16	12	16	3.0

