

**APPENDIX 2 WIRRAL PLACE SUBMISSION FOR CHESHIRE AND
MERSEYSIDE HEALTH AND CARE PARTNERSHIP
STRATEGY**

**Section template - Cheshire and Merseyside Health and Care Partnership (ICP)
Strategy- Place/Health and Wellbeing Board Strategy Summary**

Please note examples provided on subsequent pages:

Please provide:

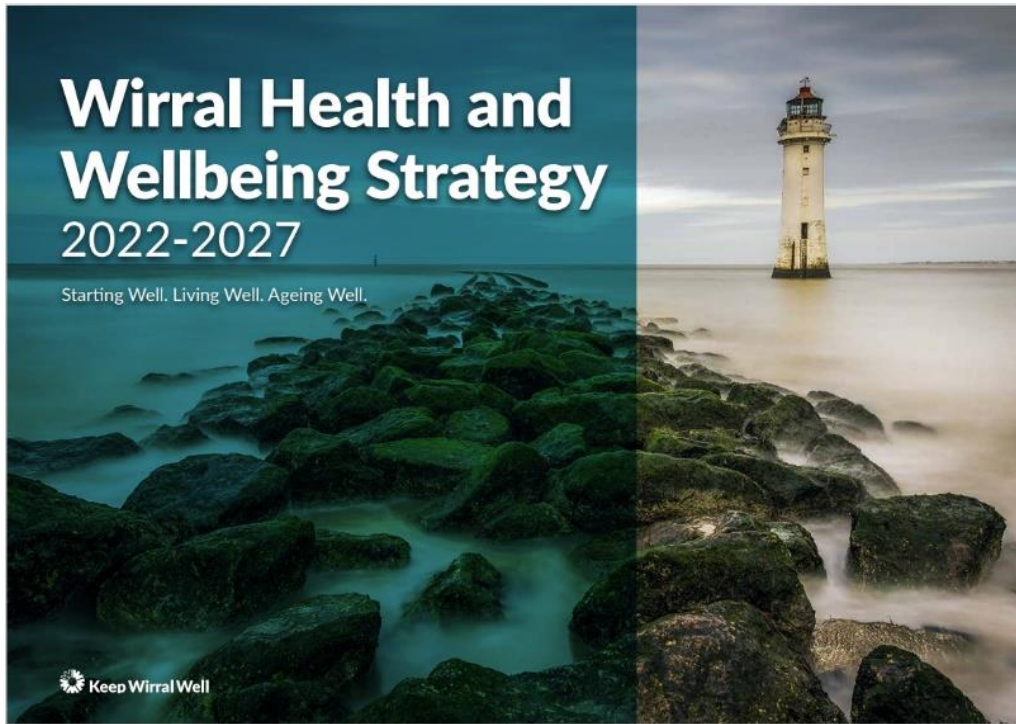
Page 1 Cover Page

To include the cover page of the current Place or HWB Strategy agreed for your Place.

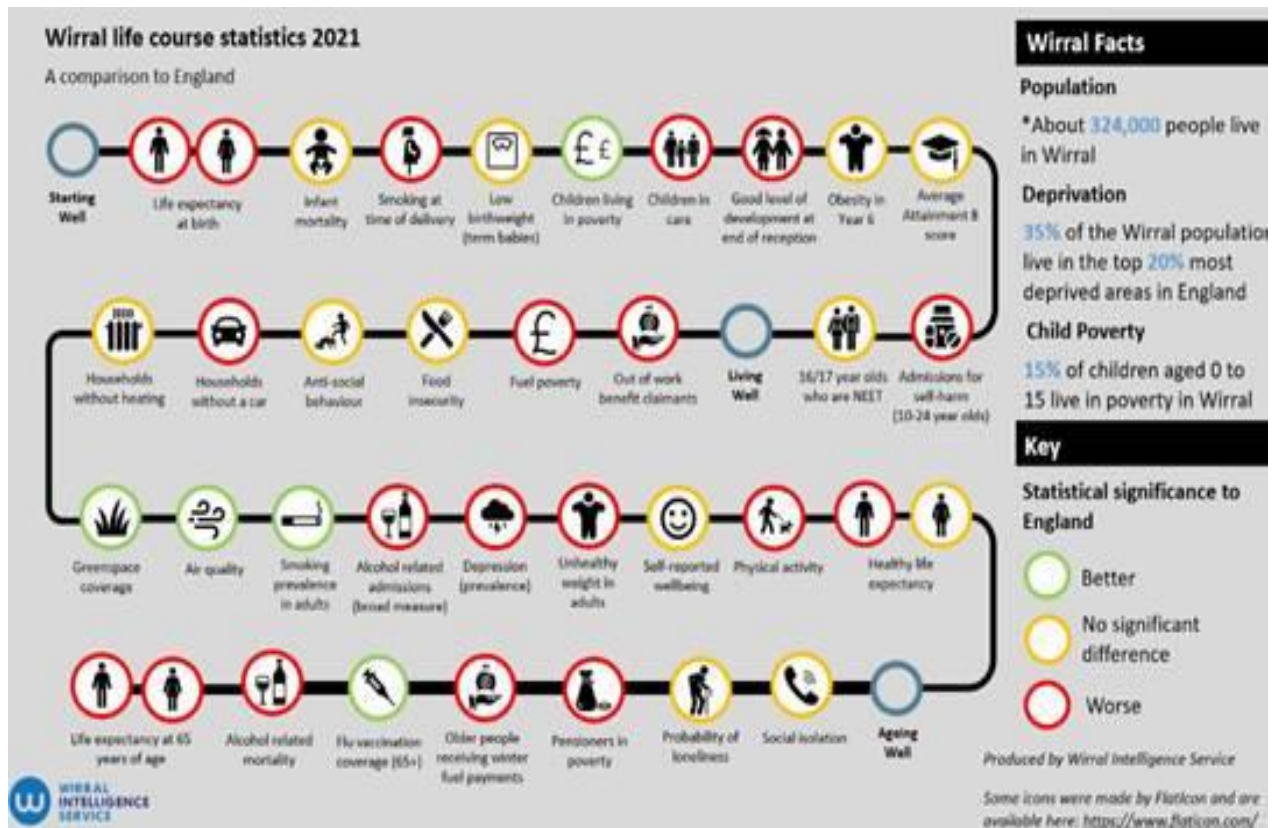
Page 2 A copy of your lifecourse

Page 3 TBC

Page 4/5 (2 pages maximum) A list of your key strategic objectives with a brief description of the actions being taken in relation to this area



Page 2 Life Course



Page 4 and 5 Summary of Objectives, Actions and Measures

Wirral Place has developed a Delivery Plan for 2022/23. This Delivery Plan is focussed on our key health and care priorities that we will need to deliver this year, or progress with significantly. The Plan has been developed collaboratively between commissioners and providers and is cognisant of key national and local strategic plans and policies, including the Wirral Health and Wellbeing Strategy and the wider Borough plan. The programmes of work within the Delivery Plan are within the below themes:-.

- Children and Young People
- Recovery of Health and Care Service Responsiveness
- Enabling Greater Independence and Preparing for Winter 22/23
- Mental health, Learning Disability and Autism
- Primary Care
- Medicine Optimisation
- Wirral Wide Priorities

Within our priorities, each theme has a number of work programmes, each with an identified Senior Responsible Officer and a plan on a page which will demonstrate the milestones and deliverables by each quarter of this financial year. The benefits captured reflect the impact against our principles which will be reported to the Wirral Place Partnership Board.

Each individual work programme will have a full project plan and impact assessments completed which will continue to report to their established respective governance processes. Only the high level detail of the milestones, deliverables and benefits will be shared and monitored as part of this Delivery Plan.

From our priorities, the key programmes of work for Wirral to deliver in year are listed below. The first four will require focussed work in the first two quarters of this year, with the aim of implementation at the beginning of quarter 3.

1. SEND – delivery against the milestones of the statement of action
2. Virtual wards/hospital at home
3. Care market sustainability – domiciliary care and care homes- increase responsiveness
4. Review need for Discharge to Assess beds (71 plus 30)
5. Reduce mental health adults out of area placements to zero
6. Place, Neighbourhood and locality delivery (including schools)
7. Workforce transformation
8. Improve transition planning for young people with complex needs, focussing on personalised transition planning and reducing reliance on long term specialist care home provision.

Increase uptake of Direct Payments and Personal Health Budgets